

**St Hippolyt<sup>®</sup>**  
NUTRITION CONCEPTS



**Feeding like nature**

The brand and its products



# The Best for your Horse



## Dear readers, dear horse friends,

Since the beginning of domestication of horses, their natural environment has been considerably changing over thousands of years. The modern, fast moving and hectic everyday life requires a lot of both, humans as well as animals. Nutrition considerably contributes to supporting health, willingness to perform and balance of your horse. For 25 years, St. Hippolyt has been committed to exactly these different requirements and challenges when it comes to equine nutrition, and concentrates on these subjects during daily work and beyond.

### Nutrition for all situations in life

Our extensive range of products aims at offering you the perfectly adapted and appropriate supplement feed for your horse for all situations in life, no matter whether pleasure, breeding or sports horse. Our products are known for their conceptual properties. Feeding like nature: A combination of natural ingredients, scientifically sound recipes and their processing according to the balance principle guarantees efficient feeds for the benefit of your horse. Our product catalogue 2013 provides you with plenty of information about our current product range, about our production methods and about our principles. Besides our approved products such as Struktur-Energetikum, the best of daily feeding, we also have the pleasure to present new products.

Complete feeds are the basis of our product range, serving as daily feeding basis of the horses. Whether pony or big horse, sport or pleasure horse, whether youngster or old horse, easy or bad keeper - St. Hippolyt products are designed to address all requirements. And St. Hippolyt products are also perfectly adapted to horses suffering from Cushing or Equine Metabolic Syndrome, laminitis or eczema.

### St. Hippolyt specialties

St. Hippolyt also offers special supplement feeds from the areas of biointelligent nutrition, breeding and mineral feeds for special requirements. Our product ranges include the area of Horse Care products, featuring special feed compositions for the respiratory system, the liver, the coat, the skin and the hooves, supplements for stomach problems and special formulas for the musculoskeletal and digestive system. The best is not yet good enough, and therefore, we set high standards for our work: We face the challenge of further developing our product range, research in the area of equine nutrition and solving problems every day anew. Last year, we were honoured with the Eurocheval Innovation Award for developing our product „Glucogard“. St. Hippolyt will continue entering new territories, and for example cooperate in the nutritional processing of high-protein soy products that are free from genetically modified components.



**Bernd Hermann**



**Bernd Ebert**

Feed Index	4
Feeding like nature	6
A unique production	7
Biointelligent nutrition	8
<b>Basics</b>	
Struktur-Energetikum	10
Irish Mash	12
Reformmüsli „G“	14
St. Hippolyt NutriStar	16
HestaMix	18
Beste Jahre	20
Equigard	22
Vollwertpellets	24
<b>High Performance</b>	
New essential nutrients in equine nutrition	26
<b>New</b> SuperCondition High Performer	28
International Sports	30
QElan	32
SuperCondition	34
St. Hippolyt Gold Medal	36
<b>Fibres</b>	
Wiesencobs / LuzerneMix	38
<b>Breeding</b>	
Vitale Stute - gesundes Fohlen	40
Equilac	42
Fohlengold	44
<b>Mineral feed supplements</b>	
Gemüse-Kräuter-Mineralien / SemperMin / SemperCube	46
47	
<b>HorseCare</b>	
Let food be thy medicine and medicine be thy food	48
Glucogard	50
<b>New</b> Cortigard	52
<b>New</b> Glyx-Mash / Glyx Lobs	54
Movicur	56
Lamin forte	58
Ungulat	60
MicroVital	62
EquiMall, EquiMall forte	64
LinuStar / Hefekultur	66
Equilizer	68
Meta-Diät / Equimeb Hepa	70
Mucolyt / Hippomun	72
VitaminE + Selenium / Makor	74
<b>Feed oils</b>	
HippoLinol / Leinöl / Schwarzkümmelöl	76
76	
<b>Hippovet</b>	
Selenium / Manganese / Iron / Copper / Zinc	78
<b>Equine care products</b>	80
<b>Dog</b>	
Movilan Dog / Dog vegetarisch	82
Canigard / MicroVital Dog	84
Other products	86
<b>Human products</b>	
Concal / BiConcal / MicroVital human / Flavocell	88
References	90
Distribution / GHI	92
Contacts	94

The declaration of ingredients is up-to-date and valid at the time of printing. Please contact our feed advisors if you have any questions.

# St. Hippolyt Feed Index

To facilitate choosing the appropriate St. Hippolyt-product, we have compiled a short overall view.

## Basic feed ration

Purpose	Basic feed	Feed supplement
<b>Pleasure horse</b>	Hesta Mix, Struktur-Energetikum, Vollwertpellets, Reformmüsli G, NutriStar	MicroVital, LinuStar, Makor
<b>Easy keeper</b>	Equigard, Struktur-Energetikum, Hesta Mix Light energy	Glucogard, MicroVital
<b>Competition horse</b>	Struktur-Energetikum, Reformmüsli G, ChampionsClaim	Goldmedal, Super Condition, High Performer, QELan, Equilizer
<b>Western competition horse</b>	NutriStar, Struktur-Energetikum	Goldmedal, Super Condition, High Performer, QELan, Equilizer
<b>Old horse</b>	Vitalmüsli Beste Jahre, Struktur-Energetikum, Pre Alpin Wiesencobs	Movicur, EquiMall, LinuStar, Hefekultur, QELan, Lamin Forte
<b>Breeding stallion</b>	Struktur-Energetikum, Hesta Mix	MicroVital, Goldmedal, High Performer
<b>Broodmare</b> Breeding preparation and 1st - 8th month of gestation	Struktur-Energetikum, Hesta Mix	MicroVital, Beta-Carotin, Hippomun, LinuStar
<b>Broodmare</b> Late term pregnancy and lactation	Equilac	EquiMall, Gemüse-Kräuter-Mineralien, Hippomun, High Performer
<b>Foals</b> Nursing foal, weanling and two-year olds	Fohlengold	MicroVital, Hefekultur, EquiMall, Hippomun, High Performer
<b>Young horses</b> Two years and older	Hesta Mix, Struktur-Energetikum, NutriStar	Movicur, MicroVital, High Performer



## Special supplements

<b>Problem / purpose</b> <b>Appropriate products</b>	<b>Immune system:</b> Hippomun, MicroVital, High Performer, EquiMall, Hefekultur, LinuStar
<b>Allergic reaction:</b> MicroVital, Schwarzkümmelöl, Hippomun	<b>Colic:</b> Mash, LinuStar, Hefekultur, EquiMall
<b>Arthrosis:</b> Movucur, Lamin forte	<b>Watery stools:</b> MicroVital, Hefekultur, EquiMall, Pre Alpin Wiesencobs, Lamin forte, LinuStar
<b>Diseases of the respiratory system:</b> Struktur-Energetikum, Mucolyt, Hippomun, MicroVital, Lamin forte, Schwarzkümmelöl	<b>Tying up:</b> Vitamin E Selenium, Super Condition, Makor, Struktur-Energetikum, Equigard
<b>Borreliosis:</b> Hippomun, Lamin forte	<b>Hepatic disease:</b> Metadiät, Equimeb Hepa, MicroVital
<b>Diarrhoea:</b> Hefekultur, EquiMall, MicroVital, Hippomun, Pre Alpin Wiesencobs, Lamin forte	<b>Gastric ulcer:</b> Equigard, Luzerne Mix, Mash, LinuStar, Hippolinol, EquiMall
<b>Equine Cushing Syndrome:</b> Cortigard, Equigard, Luzerne Mix, LinuStar, Leinöl/Hippolinol, Glyx Mash	<b>Cracked heels:</b> MicroVital, Dermilac Prozem, Equimeb Hepa
<b>Equine Metabolic Syndrome:</b> Equigard, Glucogard	<b>Muscle development and release:</b> Goldmedal, Super Condition
<b>Equine Sarkoid:</b> MicroVital	<b>Calming product:</b> Equilizer
<b>Energy booster:</b> QElan, Super Condition, High Performer, EquiMall	<b>Kidney disease:</b> Pre Alpin Wiesencobs, Metadiät, Equimeb Hepa
<b>Coat problems, dander, itching:</b> Hesta Mix Serie, MicroVital, Dermilac Prozem	<b>Fungus infection:</b> MicroVital, Hippomun
<b>Change of coat:</b> MicroVital, Mash, LinuStar, Leinöl/Hippolinol	<b>PSSM (Polysaccharide Storage Myopathy):</b> Equigard, Luzerne Mix, Hippolinol, Super Condition, Makor, Vitamin E Selenium, Glyx Mash
<b>Fractures:</b> MicroVital, High Performer	<b>Sweet itch:</b> MicroVital, Hesta Mix Serie, Dermilac Prozem, Equimeb Hepa, LinuStar
<b>Joint disorder:</b> Movicur, Lamin forte	<b>Bone spavin:</b> Movicur, Lamin forte
<b>Increase of weight:</b> Vitalmüsli Beste Jahre, EquiMall, Hippolinol, Mash, Luzerne Mix, Pre Alpin Wiesencobs	<b>Maintenance feed for resting horses:</b> Equigard, Mash, LinuStar, Equilizer
<b>Reduction of weight:</b> Equigard, Glucogard, Glyx Mash	<b>Thrush:</b> Ungulat, MicroVital
<b>Hoof problems:</b> Ungulat, Spuma Coron	<b>Digestive problems:</b> Mash, LinuStar, Hefekultur, EquiMall, Pre Alpin Wiesencobs, Lamin forte
<b>Laminitis:</b> Equigard, Glucogard, Lamin forte	<b>Injuries of muscles, tendons, ligaments:</b> Movicur, Lamin forte, High Performer
<b>Navicular syndrome:</b> Movicur, Lamin forte	<b>Wound healing:</b> MicroVital, High Performer, LinuStar

# Feeding like nature

According to our principle „Feeding like nature“, St. Hippolyt adds a vast and diverse range of components to its feeds that are rich in vital nutrients and that naturally enrich their nutritional value. Among these ingredients are different types of herbs, home-made cold-pressed oil, corn, barley and wheat germ, components derived from grapes and apples, malt and brewer's yeast, flax seed, fennel and black cumin seed, but also ocean derived components (algae, coral limestone and Himalayan salt).

## Valuable tea and spice herbs

Herbs are an indispensable component of our unique recipes. Herbs are known for:

- their all-round stimulating and digestion supporting properties
- providing phytochemicals as well as micro and ultra trace elements

Your horse will repay your loving commitment with a balanced metabolism, willingness to work and well-being.

## Oil seeds and oleiferous fruits

The cold-pressed vegetable oils in the St. Hippolyt feeds are produced in special sedimentation procedures. St. Hippolyt feeds also contain whole oleaginous fruits - flax seed, sunflower seeds, corn and wheat germ, black cumin and fennel seeds. They provide a wealth of essential fatty acids, particularly Omega 3 fatty acids and valuable protein structures.

## Highly digestible grains

To ensure utmost digestibility of St. Hippolyt feeds, the production process includes

- activation of the grain's germination processes after careful cleaning and washing
- use of tempered water to start the maceration process which results in the grain's activation of enzymes

- hydrothermally decomposition of the grain by using steam
- rolling and drying of the grain in a final processing stage

The careful processing methods protect the ingredients' valuable nutrients and produce easy digestible cereal flakes of highest quality with a delicious roasting flavour.

## Biofermented products

The mash created during the malt production is a result of organic grain fermentation. During mashing, the malt is activated with water. The subsequently resulting enzymatic reactions then give rise to the creation of substances that not only stimulate appetite and promote digestion, but also strengthen the immune system and make the entire feed ration more digestible. The fresh yeast derived from some fermentation processes is also a rich source of B vitamins, beta-glucan and nucleotides, which are all beneficial for the energy production and for a good digestion.

## Wholesome and natural

Experiences gained from long years of feeding studies and scientific research have confirmed the positive aspects of organic mineral substances and trace elements. Therefore, we feel it is more than justified to produce St. Hippolyt feeds without any artificial flavourings, binding agents and preservatives and to rely on natural preservation methods. Herbs, garlic, vitamins, molasses and different kinds of vinegar specialties ensure the natural preservation of the feed instead.



# A unique production

The choice of natural ingredients including a balanced range of essential nutrients, the different feeds produced as muesli, pellet or liquid, and the exquisite herbs that impart a pleasant smell make St. Hippolyt feeds that unique. However, it requires a special and healthy production process to guarantee that all these valuable components can be combined in one of the valuable St. Hippolyt products. Only healthy products improve your horse's well-being, and this is the reason why healthy working and production methods are our principle, with the focus being placed on:

- special attention to and the choice of natural ingredients
- the use of a balanced range of essential nutrients
- the use of sustainable energies in the production process
- production free from chemical preservatives

## The Ebert Mill

The Ebert Mill in Dielheim has been known for producing balanced food products for more than 600 years. And for 25 years, the Ebert Mill has been exclusively committed to the research, development and production of the high-quality products of St. Hippolyt with the main focus being placed on the development and production of healthy products by means of innovative production processes.

The Ebert Mill considers itself as vital process, constantly adapting and coping with the challenges of the customers and, of course, of the horses. As we are closely co-operating with our customers and partners, we challenge ourselves everyday anew to develop and to produce healthy equine feeds that are perfect for your horse's digestion and general requirements.

## Innovation through combination

Tradition meets modern times - The secret of the unique St. Hippolyt products is the combination of traditional mill manufacturing processes with modern technology. The mill-owned apparatus building is constantly working on ensuring the careful processing and refining of the natural ingredients at the technical level. These particularly gentle processing methods are achieved by:

- the processing and effective combination of different high-quality natural substances
- the protection of vitamins, enzymes, unsaturated fatty acids and phytochemicals that are sensitive to heat

## Sustainable work

Another secret of St. Hippolyt and the basis of our high-quality products is the use of a diverse range of fine and high-quality ingredients that are naturally rich in vital and essential nutrients. „Quality starts with the raw material“ (Bernd Ebert). Therefore, these ingredients are primarily sourced from a number of trusted contract farms located in the Baden-area/Germany. Besides the sustainable sourcing of raw materials, the preservation of the environment is as important in the production process. The mill-owned biomass power plant produces a minimum of carbon emission, and together with the transport vehicles, fuelled with rape-seed-based fuel, considerably contribute to climate protection.

## Own research department

To perfectly match the requirements of the horses and their owners, scientific work and research at the highest possible level has to be continued. The main research efforts are focused on the ways nutrients act and affect the organism and on how to use them to best effect in the feeds. Intensive research in diet-related diseases of the horse and the resulting solutions are analysed and substantiated by corresponding studies. The constant development of new products and product lines is the result of innovative ideas from research work, but on the other hand also a consequence of the constant dialogue with horse enthusiasts and experts. Feed specialties for horses in all situations of life have been developed and continuously improved this way.

We are happy about the great number of news received from satisfied customers, reporting about their healthy and successful horses, a fact that certainly confirms our efforts and commitment.

The brand St. Hippolyt recently won the readers' award "CAVALLO Trophy 2012" as most favourite brand.





# Biointelligent Nutrition

**A perfect supply with energy-releasing substances, providing nutritional support and boosting health, makes the horses look beautiful. Besides, it ensures strong nerves and a perfect physical potential and resilience. It is not only a question of selection, quality and natural variety of all feed components. Moreover, St. Hippolyt follows new paths to optimize digestion and to improve the relationship between nutrition and physiology with biologically reasonable refining procedures. "Feeding like nature" – St. Hippolyt's approach to keep equine nutrition as natural as possible has reached a whole new level.**

## **Lecithin micelles with turbo factor**

The organism leaves part of the valuable vital substances in the feed unexploited before excretion, because the transport of many nutrients through the intestinal wall into the blood is too slow. Our new liquid products „Qelan“ for horses and „Canigard“ for dogs considerably reduce the unexploited excretion. By means of a new complexation procedure, it is possible to preserve the vital substances with unprecedented biological mineral availability.

Tiny little drops (micelles) are produced out of the vital substances, encased by pure lecithin. Because of their small size, which, however, exceeds the nanoscale, and the „slip effect“ of the lecithin, the vital-substance-lecithin-complex easily penetrates the intestinal wall. Compared to non-complexed nutrients, the rate of resorption is three to four times higher. We call this the „turbo factor“ of the micelles. The concentration of functional nutrients such as L-Carnitine, vitamin E, C, coenzyme Q10 and the joint protective glycosaminoglycan in the target tissue is considerably higher with an even considerably higher effect. An improved physical and metabolic potential are the benefits for the organism. The cell protective and anti-aging effects of vitamins and joint developing substances can also be improved. It is worth mentioning that it is no longer necessary to use the otherwise usually processed synthetic surfactants as technical excipients with the in-house complexation procedure. This excludes the potential chemical danger for the sensitive cell membranes.

And we stick to our principle „**Feeding like nature**“.

Additional information on the advantages of lecithin-coupled nutrients can be found in the descriptions of Qelan and Canigard (see index, page 3).

## **Fermentation and vinegar extraction**

For the last few years, the Ebert Mill in Dielheim has been increasingly using the natural finishing processes of pre-germination and fermentation for its St. Hippolyt horse feed. Barley and corn are pre-germinated before they are hydro-thermally flocculated. Brewer's yeast cultures, malt and sweet whey are carefully fermented before they are added. What are the advantages? In the pre-germination and fermentation, enzymes and valuable micro-organisms convert part of the starch and the sug-

ar in the sense of a pre-digestion into short-chain fatty acids. These fatty acids ensure a better energy yield, and they entail less digestive and metabolic risks than starch and sugar. The activated herbal and yeast enzymes contribute considerably to a better digestion of starch, protein and fat in the small intestine. The organism is able to absorb a higher percentage of the main nutrients in the feed - a consequence that allows saving component feed. However, what is even more important - the pre-disposition for flatulence, diarrhoea and colic can be reduced.

The fermentation process of brewer's yeast, malt and whey is controlled in such a way that a certain quantum of vinegar is produced. This naturally derived vinegar has more advantages for the wholesomeness of the feed and for the health of the digestive system. Vinegar has a cleansing effect and it mitigates as spice many disease-causing bacterium, viruses and fungus. It also connects to the starch and ensures that the starch-induced changes in the blood sugar are very moderate. This is especially good for horses that tend to insulin resistance with an increased risk for equine laminitis. Competition horses benefit from a more balanced performance basis as the blood sugar is always available at the same high level and without any setback effect (low blood sugar).

With developments of this kind, St. Hippolyt occupies a leading position in the nature-oriented nutrient technology - revolutionary, but nevertheless healthy for high-performance horses.

# The best of daily feeding

Whether at tournaments, during lovely ride outs or daily riding lessons: We love the partner at our side to be willingly working and reliable. To ensure that our horse shines during presentations, we should only give it the very best!



# Struktur- Energetikum

## A highly nutritious concentrate



Paper sack 20 kg

Struktur-Energetikum is a highly nutritious feed concentrate that combines a selected range of only the finest ingredients such as different oil seeds, ground algae, fruit and more than 30 different herbs which are added only when in season, to produce an extremely delicious muesli. The concentrated feed Struktur-E contains a balanced range of vitamins, minerals and trace elements that will cover a horse's entire daily vitamin and mineral requirements even when fed in low quantities.

- rich in bio-active herbs
- with the different kinds of sprouted grains and oil seeds
- rich in phytochemicals
- high degree of organically bound trace elements
- exclusively with natural vitamin E
- including the essential amino acids lysine and methionine

### The perfect balance

Struktur-Energetikum has been specifically designed to make the most nutritionally valuable contribution possible to your horse's diet, to effectively bal-

ance excess starch and protein intake, as well as to prevent any of the mineral deficiencies commonly associated with conventional feeds. Its dense nutrient content make it an ideal feed for ponies, small horses and special breeds as well as for horses with muscular, stomach or digestive problems, and those susceptible to laminitis, but still in need of a highly nutritious, low-starch feed.

### The power of herbs

The more than 30 different herbs, added only when in season, provide a huge number of phytochemicals such as ethereal oils, polyphenols or flavonoids. They are known for their digestion-supporting (peppermint, coriander, yarrow), cleansing and detoxifying (nettle, birch, elder) and mucolytic (fennel, sage, anise) properties and are therefore an important component in the horse feed.

### Rich in essential fatty acids

Struktur-Energetikum features a considerable range of sprouted grains resp. oil seeds: corn, barley and wheat germs, sunflower and grape seeds, flax, fennel and black cumin seeds. Besides the physiologically valuable, polyunsaturated Omega 3 and Omega 6 fatty acids, they provide valuable high-quality protein, natural vitamins and lecithin.

### Supporting digestion

The brewer's yeast, malt, dried fruit, linseed, special trace element combinations and herbs included in Struktur-Energetikum prevent the formation of intestinal gas and facilitate digestion, probiotic growth, protect the intestinal flora and effectively support the immune system.

### COMPOSITION

Corn germ, barley flakes, dried fruit (apple, grape, pear), apple syrup, herbs (peppermint, marjoram, coriander, fennel, sage, yarrow, caraway, anise, oregano) 6.8%, corn flakes, wheat bran, alfalfa fibre, sugar beet fibres, warm air dried chopped grass, sugar beet molasses, oat bran, oil mixture (linseed/sunflower/corn germ oil) 2.8%, oil seed mixture (linseed, sunflower, fennel and black cumin seed) 2.6%, whole grain oats 2%, calcium carbonate (maritime and mineral), seaweed meal, barley germs, salt, garlic, brewer's yeast, wheat germ, grape seed extract, vinegar, Himalayan salt

### INGREDIENTS

Raw protein	9.9 %
Raw fibre	11.0 %
Raw fat	8.0 %
Raw ash	10.0 %
digestible raw protein	85 g/kg
digestible energy	14 MJ/kg
Starch	14.0 %
Sugar	6.5 %

Calcium	1.3 %
Phosphorus	0.5 %
Magnesium	0.5 %
Sodium	0.4 %

Lysine	0.4 %
Methionine	0.1 %

### NUTRITIONAL ADDITIVES per kg

Vitamin A	23,000 IE
Vitamin D3	2,500 IE
Vitamin E	400 mg
Vitamin B1	15 mg
Vitamin B2	15 mg
Vitamin B6	8 mg
Vitamin B12	55 mcg
Biotin	350 mcg
Nicotinic acid	60 mg
Folic acid	7 mg
Pantothenic acid	30 mg
Choline chloride	500 mg

### TRACE ELEMENTS per kg

Iron	170 mg
Zinc	270 mg
Manganese	240 mg
Copper	55 mg
Iodine	2.2 mg
Cobalt	2.2 mg
Selenium	0.7 mg

### FEEDING RECOMMENDATION

Struktur-Energetikum is generally suitable for each type of horse. No additional mineral feed is required for quantities of **150-300 g per 100 kg** body weight and day. For small horses, ponies and horses that need less energy, Struktur-Energetikum can be used as an exclusive concentrated feed. We recommend **1 kg for high-performance horses max. 1.5 kg per day** or warmblood horses in addition to the usual ration of cereals or other compound feed and hay/straw. The same quantity has to be deducted from the concentrated feed

1 litre = approx. 650 g Struktur-Energetikum



# Good for body and soul



Each time our horse eats its freshly prepared Irish Mash, we gladly watch it snuffling with pleasure and are happy about its healthy appetite. But Irish Mash is not only balm for the soul: it also stimulates the metabolism and digestion and helps to quickly recover after illness.

# Irish Mash

A feed with tradition



Paper sack 7.5 kg and 15 kg

**This extremely tasty mixture activates metabolism and digestion, is easy to prepare and should not be missing from the feeding schedule on days spent in the stable, when shedding, after high performances or illness.**

- easy to prepare, also with cold water
- stimulates digestion, dietetic concept
- particularly tasty with natural apple and grape components
- easy digestible

## A combination of tradition and modern times

Irish Mash has a century-long tradition of being fed to horses following hard work, when recovering from illness or to reduce the risk of colic. It is a particularly delicious horse feed and has been formulated very much in keeping with the traditional Irish Mash recipe of wheat bran and linseed. It has been developed in accordance with the latest nutritional science findings. The yellow linseed, gently cracked in a special production process, does not require any cooking and is very easy to prepare. An easy digestion and a high nutritious value are ensured by the low starch content, highly digestible grain, finest malt-yeast extracts, coriander and brewer's yeast.

## Beneficiary for all horses

With its dietetic formula and the particularly brilliant acceptance by the horses, Irish Mash is the perfect first feed for horses to be offered after colic, surgeries, severe illness, lack of appetite and chewing problems. Due to its intestine-nurturing properties, it even improves the feed efficiency of hard keepers. Irish Mash also considerably contributes to recovery after competition, stud service and birth and proved to be particularly valuable during shedding.

Irish Mash can be fed 1 - 3 times a week instead of concentrated feed and, in special cases (for example after surgeries or stomach ulcers) even exclusively with hay and straw. Irish Mash is even more tasty and nutritious when fed together with EquiMall.

## COMPOSITION

Wheat bran, barley flakes, oil seed mixture (linseed, sunflower) 9.2%, whole grain oats 9%, corn flakes, sugar beet molasses, dried apples, sugar beet fibres, warm air-dried chopped grass, grape skins, apple syrup, brewer's yeast 1.4%, salt, wheat germ, malt-yeast-mixture 1%, oil mixture (linseed/sunflower/corn germ) cold-pressed 1%, grape seed extract, corn germ oil, coriander 0.5%, sea algae chalk

## INGREDIENTS

Raw protein	11.5 %
Raw fibre	8.5 %
Raw fat	5.0 %
Raw ash	7.2 %
digestible raw protein	92 g/kg
digestible energy	10.5 MJ/kg
Starch	23.3 %
Sugar	9.0 %
Calcium	0.4 %
Phosphorus	0.5 %
Magnesium	0.3 %
Sodium	0.5 %

## NUTRITIONAL ADDITIVES per kg

Vitamin A	7,200 IE
Vitamin D3	800 IE
Vitamin E	50 mg
Vitamin B1	10 mg
Vitamin B2	8 mg
Vitamin B6	8 mg
Vitamin B12	20 mcg
Biotin	200 mcg
Nicotinic acid	90 mg
Folic acid	1 mg
Pantothenic acid	25 mg
Choline chloride	1,000 mg

## TECHNOLOGICAL ADDITIVE

Silicea

## TRACE ELEMENTS per kg

Iron	220 mg
Zinc	90 mg
Manganese	70 mg
Copper	15 mg
Iodine	0.8 mg
Selenium	0.4 mg

## FEEDING RECOMMENDATION

**approx. 70-200 g per 100 kg** body weight: Mix Irish Mash with the same quantity of warm or hot water, let it stand for approx. 15 minutes and feed it warm. Irish Mash can also be prepared with cold water in the summer months with the soaking time being increased to 30 minutes. In general, feed 1 - 3 times a week. If necessary, a reduced quantity can be fed every day.

Dietetic supplementary feed for horses to balance chronic intestinal disorders during recuperation/weight deficiencies. Recommended period: Start with six weeks. It is recommended to get advice of a veterinarian, before starting to feed or before extending the feeding period. Also suitable for older animals.

1 litre = approx. 550 g IrishMash

# POWERFUL COMPOSURE



Nervous and difficult to ride? Some horses are obviously that high-strung by an oat-based diet that only the grain from the Orient can help. In combination with oleaginous fruits, oils and fibres, highly digestive barley flakes provide the required energy that turn even lively horses into balanced partners for sports and recreational purposes.

# Reformmüsli „G“

Free from oats and full of energy



Paper sack 20 kg

The highly nutritional, balanced and delicious Reformmüsli “G” has been specifically designed as feed for lively horses and bad keepers.

- particularly tasty and nutritious
- based on highly-digestive cereal flakes
- free from oats and low in protein content
- contains herbs, ground algae, oils and oleaginous fruits

### Versatile energy carrier free from oats

Reformmüsli “G” contains highly digestible barley and corn flakes, corn germs, linseed and sunflower seeds as well as their cold-pressed oils. Tasty and fermentable raw fibres such as dried apples, sugar beet fibres and al-

falfa pellets provide the required energy. The protein content is low, however, the amino acid content is particularly well-adapted. Reformmüsli “G” is not only an excellent energy provider for working horses, it also helps skinny horses to thoroughly gain weight.

### A harmonious digestion

The pristine plant fibres and dried fruits provide the necessary carbohydrates that increase the activity of the intestinal bacteria on the one hand and that support the bacterial synthesis of high-energy fatty acids and of essential vitamins on the other hand. Linseed and brewer’s yeast serve to promote the intestinal motor function and protect the mucous membranes. Apart from digestion supporting carbohydrates, a delicious mixture of herbs stimulate appetite and chewing activity.

### Tasty chewing fun

With its structured, muesli-like appearance and the richness of its ingredients, Reformmüsli “G” contributes considerably to a healthy and tasty diet. The high content of fibre and the delicious ingredients, particularly spice herbs, make Reformmüsli “G” a well-accepted feed for horses, specially also for picky horses. The molasse-structure ensures a completely delicious taste for your horse, free from dust.

### COMPOSITION

Barley flakes, corn flakes, dried apple, sugar beet molasses, alfalfa fibre, wheat bran, oat bran, apple syrup, oil mixture (linseed/sunflower/corn germ oil) cold-pressed 2.5%, oil seed mixture (linseed, sunflower seed, black cumin seed) 2.5%, sugar beet fibres, herbs (coriander, peppermint, fennel, marjoram) 1.3%, calcium carbonate (maritime and mineral), corn germ, barley germ, grape seed extract, salt, garlic, algae powder, wheat germ, brewer’s yeast, malt-yeast-mixture

### INGREDIENTS

Raw protein	9.5 %
Raw fibre	9.0 %
Raw fat	5.0 %
Raw ash	8.5 %
digestible raw protein	82 g/kg
digestible energy	12 MJ/kg
Starch	27.5 %
Sugar	8.5 %
Calcium	1.0 %
Phosphorus	0.3 %
Magnesium	0.3 %
Sodium	0.3 %

### NUTRITIONAL ADDITIVES per kg

Vitamin A	13,000 IE
Vitamin D3	1,400 IE
Vitamin E	70 mg
Vitamin B1	10 mg
Vitamin B2	10 mg
Vitamin B6	6 mg
Vitamin B12	30 mcg
Biotin	220 mcg
Nicotinic acid	43 mg
Folic acid	3 mg
Pantothenic acid	20 mg
Choline chloride	500 mg

### TRACE ELEMENTS je kg

Iron	175 mg
Zinc	160 mg
Manganese	100 mg
Copper	30 mg
Iodine	1.0 mg
Cobalt	1.3 mg
Selenium	0.5 mg

### FEEDING RECOMMENDATION

To be fed as supplement to conventional basic feed with roughage and/or pasture grass **approx. 500-800 g per 100 kg** body weight and day. This overall quantity should be offered in different portions. With lower dosage or supply shortages, we recommend adding SemperMin or MicroVital.

1 litre = approx. 600 g Reformmüsli G



They are already born with an enviable muscular body and a particularly special composure. Western horses shine with their compact conformation and their even-tempered nature. To perfectly match this easy-keeping type of horse, a special nutritional concept is required.

# Particularly cool



# NutriStar

The special feed for western horses and muscles



Paper sack 20 kg

The muesli is extremely low in carbohydrates and features a special range of nutrients that makes it particularly suited for western horses. It contains a modest amount of high-quality protein. NutriStar also proved to be a valuable feed for the training of young horses or horses of all breeds with weak muscles.

- contains high-quality protein for well-developed muscles
- rich in raw fibres and sprouted grains
- contains herbs, ground algae, oils and oleaginous fruits
- moderate content of grains

## For special types of horses

Western horses such as Quarter or Appaloosa and others, originally bred to solely work with cattle, have a genetically inherited predisposition to develop more muscles. The percentage of muscles making up their overall body weight is considerably higher than with other breeds, and yet, at the same time, their energy requirement tends to be lower. Their feed has to be low in energy and, at the same time, provide an adequate supply of nutrients that ensure a proper muscle function. Failure to meet these requirements often translates into bones, tendons, ligaments and joints competing for the few nutrients available. In the long term, these serious deficiencies can lead to premature degenerative wear. But there are also other types of horses, for example young horses, that benefit from a diet that is moderate in carbohydrates and rich in protein.

## Muscle-relevant ingredients

NutriStar has a very moderate overall, but high-quality protein content. The energy provided is derived from high-fibre pectin carriers, oleaginous fruits and oils. The low carbohydrate content is particularly beneficial for the muscles whose proper functioning is further promoted by a special mix of minerals. Natural antioxidants such as Vitamin E protect the muscles from free radicals and promote an efficient nutrient utilisation.

## COMPOSITION

Barley flakes, alfalfa fibre, warm air-dried chopped grass, dried apples, corn flakes, apple syrup, wheat bran, corn germ, sugar beet molasses, sugar beet fibres, grape skins, oat bran, oil seed mixture (linseed, sunflower, fennel, black cumin seed) finely ground 3%, whole grain oat flakes 2.8%, herbs (peppermint, coriander, sage, lovage, oregano, marjoram) 1.8%, oil mixture (linseed/ sunflower/ corn germ oil) cold-pressed 1.4%, barley germs, grape seed extract, calcium carbonate (maritime and mineral), salt, algae powder, wheat germ, brewer's yeast, garlic

## INGREDIENTS

Raw protein	10.0 %
Raw fibre	12.0 %
Raw fat	5.0 %
Raw ash	8.5 %
digestible raw protein	86 g/kg
digestible energy	11.5 MJ/kg
Starch	17.7 %
Sugar	9.2 %
Calcium	0.8 %
Phosphorus	0.3 %
Magnesium	0.2 %
Sodium	0.3 %
Lysine	0.5 %
Methionine	0.2 %

## NUTRITIONAL ADDITIVES per kg

Vitamin A	13,000 IE
Vitamin D3	1,400 IE
Vitamin E	130 mg
Vitamin B1	10 mg
Vitamin B2	10 mg
Vitamin B6	7 mg
Vitamin B12	30 mcg
Biotin	320 mcg
Nicotinic acid	65 mg
Folic acid	5 mg
Pantothenic acid	22 mg
Choline chloride	850 mg

## TRACE ELEMENTS per kg


Iron	250 mg
Zinc	220 mg
Manganese	180 mg
Copper	45 mg
Iodine	1.2 mg
Cobalt	1.4 mg
Selenium	0.6 mg

## FEEDING RECOMMENDATION

To be fed as supplement to conventional basic feed with roughage and/or pasture grass **approx. 300-600 g per 100 kg** body weight and day. This overall quantity should be offered in different portions. With lower dosage or supply shortages, we recommend adding Semper-Min or MicroVital.

1 litre = approx. 600 g NutriStar

# The Success Story



What started as feeding study at the German stud Hesta Borg in 1998 with its special breeds, developed into one of the most successful feed concepts for horses of all breeds: Hesta Mix. The influence of nutrient deficiencies and other deficiency symptoms on diet-related problems such as eczema, immune disorders, itching and mental disorders was uncovered with the Icelandic horses. A fundamental finding to optimize feed rations.

# Hesta Mix-Serie

## Especially rich in micronutrients



Paper sack, Müsli and Light energy 20 kg  
Paper sack, Classic 25 kg

The Hesta Mix-series is suitable for special breeds, good keepers and all horses with special nutritional and mineral requirements.

- highly bio-available trace elements
- rapid feeding success
- can be easily combined with other concentrated feeds
- contains herbs, ground algae, oils and oleaginous fruits
- free from oats

### The many faces of deficiency symptoms

Many horses' energy requirements can be more than adequately met by feeding them very small concentrate feed rations. However, these small feed rations frequently lack essential vital nutrients and micronutrients. Conventional mineral supplements often fail to meet the real nutritional needs of the horses. The result are deficiency symptoms that express themselves in nervousness and restlessness, signs of wear and tear and digestive problems, susceptibility to infections, skin problems, allergies and loss of weight, metabolic and endocrine disorders.

### Particularly high in trace element content

The Hesta Mix-series is rich in vital nutrients and has a high content in biologically available micronutrients. This guarantees an adequate and proper supply of organic trace elements even when fed in small quantities. Deficiency symptoms are reliably resolved or even prevented thanks to the easy absorption in the intestine and the rapid transport to the relevant target organ.

### Hesta Mix varieties: Hesta Mix Müsli

Mainly regularly working horses with an average requirement for component feed are fed the tasty "Hesta Mix Müsli". These are in most cases easy keepers, larger breeds such as Andalusians, Lusitanos, cold-blooded horses, Pintos, Arabs, Tinker or Friesian horses.

### Hesta Mix Classic

The cold-pressed "Hesta Mix Classic" with the unbeatable price-performance-ratio contains more trace elements and less energy than Hesta Mix Müsli. It can also be easily fed to good keepers. The diet of boarding horses is upgraded when complementing the stable-owned feed with Hesta Mix Classic which will rapidly become visible on skin and coat.

### Hesta Mix Light energy

Extremely easy-keeping horse breeds such as Haflinger, Iceland and Fjord horses or Shetland ponies benefit from the tasty and low-calorie feed "Hesta Mix light energy". It is particularly low in energy, but especially high in micronutrients and ensures the horses' appropriate and high-quality supply with all necessary components, especially during the pasture season.

### COMPOSITION CLASSIC

Barley flakes, alfalfa fibre, wheat bran, oat bran, oil seed mixture (linseed, sunflower, fennel seed, black cumin seed) 7.2%, dried apples, corn germ 4.5%, herbs (coriander, sage, fennel, marjoram, peppermint) 4.2%, sugar beet fibres, corn flakes, grape skins, calcium carbonate (maritime and mineral), brewer's yeast, grape seed extract, salt, malt-yeast-mixture, barley germs, oil mixture linseed/sunflower cold-pressed 1%, algae powder, wheat germ, garlic, pea protein

### COMPOSITION MÜSLI

Barley flakes, corn flakes, alfalfa fibre, dried apple, apple syrup, sugar beet fibres, wheat bran, oat bran, oil seed mixture (linseed, sunflower, fennel seed, black cumin seed) 2.8%, oil mixture cold-pressed (linseed, sunflower, corn germ oil) 2.6%, herbs (coriander, sage, peppermint, fennel, marjoram) 2.5%, sugar beet fibres, corn germ, calcium carbonate (maritime and mineral), grape skins, salt, grape seed extract, brewer's yeast, wheat germ, algae powder, malt-yeast-mixture, barley germs, garlic, pea protein, magnesium acetate, magnesium sulfate, fruit vinegar

### COMPOSITION LIGHT ENERGY

Dried apple, barley flakes, wheat bran, grape skins, alfalfa fibre, warm air dried chopped grass, oil seed mixture (linseed, sunflower, black cumin seed) 6.3%, oat bran, corn flakes, sugar beet fibres, oil mixture (linseed, sunflower, corn germ oil) cold-pressed 2.8%, herbs (coriander, peppermint, fennel) 2.5%, calcium carbonate (maritime and mineral), sugar beet molasses, carrots, brewer's yeast, apple syrup, corn germ, grape seed extract, salt, algae powder, wheat germs, garlic

INGREDIENTS	CLASSIC MÜSLI LIGHT		
	10.0	10.0	10.0 %
Raw protein	12.0	9.0	12.0 %
Raw fibre	4.3	4.8	6.0 %
Raw fat	9.4	9.0	11.0 %
Raw ash	68	78	80 g/kg
digestible raw protein	11	11.5	10 MJ/kg
digestible energy	17.5	23.0	12.7 %
Starch	4.0	9.0	8.7 %
Sugar	1.2	1.1	1.4 %
Calcium	0.5	0.3	0.5 %
Phosphorus	0.3	0.3	0.3 %
Magnesium	0.4	0.4	0.6 %
Sodium			

### NUTRITIONAL ADDITIVES per kg

Vitamin A	15,000	15,000	20,000 IE
Vitamin D3	1,700	1,700	2,100 IE
Vitamin E	120	95	125 mg
Vitamin B1	10	10	10 mg
Vitamin B2	10	10	10 mg
Vitamin B6	7	7	7 mg
Vitamin B12	40	40	40 mcg
Biotin	250	250	250 mcg
Nicotinic acid	45	50	110 mg
Folic acid	6	5	7 mg
Pantothenic acid	22	20	35 mg
Choline chloride	280	550	1,000 mg
Iron	150	200	220 mg
Zinc	380	320	580 mg
Manganese	300	280	540 mg
Copper	70	70	100 mg
Iodine	2.0	0.8	1.5 mg
Cobalt	2.0	2.0	2.0 mg
Selenium	0.9	0.7	1.3 mg

### FEEDING RECOMMENDATION

To be fed as supplement to conventional basic feed including roughage and/or pasture grass, per 100 kg body weight and day:

**Classic: approx 150-250 g**

1 litre = approx. 750 g

**Müsli: approx 200-300 g**

1 litre = approx. 600 g

**Light: approx 100-150 g**

1 litre = approx. 550 g

With lower dosage or supply shortage, we recommend adding SemperMin or MicroVital.

Trust and life experience have made the seniors amongst our horses strong. There is very little that still has the power to unsettle them. The lessons have been learnt. Older horses are very often easier and more comfortable to ride than expected. Provided they are healthy, well-fed and fit, older horse's muscle strength and power can also be maintained and preserved even at an advanced age.

# Too young for the scrapheap!

# Vitalmüsli Beste Jahre

Rich in vital nutrients and designed to support convalescence



Paper sack, 20 kg

The modern muesli is rich in fibre and perfectly suited for sensitive and older horses. Also especially suitable for gently increasing weight after significant weight loss for emaciated horses or horses susceptible to colic.

- rich in high-quality fibres
- low grain content, only 3% oat flakes
- nourishing and at the same time highly digestible
- contains herbs, ground algae, oils and oleaginous fruits

## Third-age vitality

The frequency of work and thus the requirements for carbohydrates drop with increasing age. In many cases, a question of health is the reason why senior horses are not able to do a lot of work anymore. However, to maintain their basic physical constitution, it is important to continue providing them with certain nourishing energy carriers as well as with vital substances and trace elements. This will ensure their well-being and healthy overall appearance despite old age. The high-quality ingredients in "Beste Jahre" contain a vast range of natural vitamins, minerals and trace elements that considerably contribute to the senior horse's vitality.

## The perfect „anti-aging“ strategy

"Beste Jahre" Vitalmüsli is the perfect choice for older horses. The high fibre and herb content will, to a certain extent, adequately compensate any quality deficiencies in roughage. Cold-pressed oils in combination with a huge quantity of natural vital substances and trace elements provide an ample supply of vital nutrients. This creates a sound basis from which to counteract age-related nutritional deficiencies that might otherwise result in allergies, eczema, chronic bronchitis and digestive disorders. "Beste Jahre" Vitalmüsli is therefore perfectly suited not only as a feed for older horses, but also for sensitive horses and hard keepers as well as maintenance feed for resting horses to prevent any loss in the basic physical constitution.

## COMPOSITION

Barley flakes, warm air-dried chopped grass, corn flakes, alfalfa fibre, sugar beet molasses, dried apple, corn germ, wheat bran, apple syrup, whole grain oats 3%, oil mixture (linseed, sunflower, corn germ oil) cold-pressed 2.8%, oat bran, herbs (peppermint, coriander, rosemary, fennel) 2%, sugar beet fibres, oil seed mixture (linseed, sunflower, black cumin seed) 1.7%, grape seed extract, calcium carbonate (maritime and mineral), salt, wheat germ, brewer's yeast, malt-yeast-mixture, barley germ, algae powder, garlic

## INGREDIENTS

Raw protein	9.9 %
Raw fibre	11.0 %
Raw fat	6.0 %
Raw ash	8.0 %
digestible raw protein	82 g/kg
digestible energy	11 MJ/kg
Starch	22.8 %
Zucker	8.3 %
Calcium	1.0 %
Phosphorus	0.4 %
Magnesium	0.3 %
Sodium	0.3 %

## NUTRITIONAL ADDITIVES per kg

Vitamin A	10,000 IE
Vitamin D3	1,100 IE
Vitamin E	95 mg
Vitamin C	1,000 mg
Vitamin B1	10 mg
Vitamin B2	10 mg
Vitamin B6	7 mg
Vitamin B12	25 mcg
Biotin	250 mcg
Nicotinic acid	55 mg
Folic acid	4 mg
Pantothenic acid	20 mg
Choline chloride	850 mg

## TRACE ELEMENTS per kg

Iron	175 mg
Zinc	200 mg
Manganese	160 mg
Copper	40 mg
Iodine	0.4 mg
Cobalt	1.6 mg
Selenium	0.6 mg


## FEEDING RECOMMENDATION

To be fed as supplement to conventional basic feed including roughage and/or pasture grass, **approx. 300-600 g per 100 kg** body weight and day. This overall quantity should be offered in different portions. With lower dosage or supply shortages, we recommend adding SemperMin or MicroVital.

Always provide the senior horse with good roughage or feed hay cobs.

1 liter = approx. 600 g Vitalmüsli „Beste Jahre“

# Easy to feed?



Overweight! The bane of civilization? More and more horses are suffering from overweight or the Equine Metabolic Syndrome. Laminitis is a possible consequence of this metabolic disorder. To successfully prevent the serious consequences associated with an disturbed carbohydrate metabolism, particularly easy keepers and horses already suffering from overweight require a diet low in sugar and protein which, however, provides all essential vital substances to actively maintain and support the equine metabolism.

# Equigard

The grain-free diet,  
free from molasses



Paper sack Müsli 20 kg  
Paper sack Classic 25 kg

Equigard is a grain-free muesli, specifically designed for horses suffering from metabolic disorders such as the Equine Metabolic Syndrome, laminitis and Equine Cushing's Syndrome as these horses require a diet low in sugar and protein. A grain-free diet is also particularly important with equine myopathies such as Typing-up, PSSM and rhabdomyolysis as well as with gastric ulcers.

- free from grain and molasses
- low in starch and sugar content
- rich in low glycaemic fibres
- contains a special range of minerals to maintain and support the carbohydrate and fat metabolism
- high feed volume - low energy content
- contains herbs, ground algae, oils and oleaginous fruits

## Doing more with less

According to the latest research studies, horses susceptible to the Equine Metabolic Syndrome, laminitis and equine myopathies such as Typing-up and PSSM should only be fed a limited amount of non-structural carbohydrates such as grain starch and sugar. Equigard contains approx. 80% less starch and sugar than oats and is therefore the perfect low-energy feed for horses susceptible to or already affected by these diseases. The increased energy requirements of performance horses or skinny horses suffering from the Equine Cushing's Syndrome should be met by using native oils, oil seeds and fibres for which we recommend a combined feed with Struktur Energetikum, linseed oil and/or HippoLinol. Equigard is also the perfect maintenance feed for resting horses during convalescence.

## Vital substances for an active metabolism

To maintain and stabilize a healthy insulin sensitivity and the carbohydrate and fat metabolism, vital substances such as magnesium, zinc, copper, manganese, selenium,  $\Omega$  3 fatty acids, lecithin and antioxidants such as vitamin E and fruit flavonoids are particularly important.

## Fibre muesli or pellet?

To serve both interests, we have now extended our range of products and are offering the approved fibre muesli as a pellet. An excellent alternative for run-in stables with automatic horse feeders as the small pellet easily passes through the feeding device.

## COMPOSITION MÜSLI

Warm air-dried chopped grass (low glycaemic index) 22%, dried apples, sugar beet fibres, linseed 4.4%, apple syrup, corn germ, oil mixture (linseed, sunflower, corn germ oil) cold-pressed 3.5%, herbs (chamomile, fennel, rosemary, coriander, fenugreek seed, milk thistle) 3%, alfalfa fibre, brewer's yeast, Isomaltose prebiotic 1.5%, grape seed extract, rice bran, salt, calcium carbonate (maritime and mineral), carrots, garlic, algae powder

## COMPOSITION PELLET

Warm air-dried chopped grass (low glycaemic index) 21%, dried apples, sugar beet fibres, corn germ, linseed 5%, rice bran, brewer's yeast, oat bran, apple syrup, oil mixture (linseed, sunflower, corn germ oil) cold-pressed 2.5%, herbs (chamomile, fennel, rosemary, coriander, fenugreek seed, milk thistle) 2%, calcium carbonate (maritime and mineral), alfalfa fibre, Isomaltose prebiotic 1.5%, salt, grape seed extract, garlic, algae powder

## INGREDIENTS

	Müsli	Pellet
Raw protein	9.6 %	11.8 %
Raw fibre	17.0 %	17.0 %
Raw fat	8.0 %	7.5 %
Raw ash	12.5 %	10.0 %
digestible raw protein	77 g/kg	91 g/kg
digestible energy	8.5 MJ/kg	8.8 MJ/kg
Starch	3.0 %	3.0 %
Sugar	6.0 %	7.0 %

Calcium	1.2 %	1.5 %
Phosphorus	0.5 %	0.5 %
Magnesium	0.6 %	0.5 %
Sodium	0.5 %	0.8 %
Lysine	0.5 %	0.5 %
Methionine	0.5 %	0.5 %

## NUTRITIONAL

### ADDITIVES per kg

Vitamin A	16,000 IE	16,000 IE
Vitamin D3	1,700 IE	1,700 IE
Vitamin E	580 mg	550 mg
Vitamin B1	11 mg	11 mg
Vitamin B2	15 mg	15 mg
Vitamin B6	7 mg	7 mg
Vitamin B12	40 mcg	40 mcg
Biotin	420 mcg	350 mcg
Nicotinic acid	37 mg	60 mg
Folic acid	4 mg	6 mg
Pantothenic acid	18 mg	25 mg
Choline chloride	200 mg	400 mg

Iron	200 mg	200 mg
Zinc	300 mg	300 mg
Manganese	300 mg	300 mg
Copper	85 mg	75 mg
Iodine	2.0 mg	1.2 mg
Cobalt	2.0 mg	2.5 mg
Selenium	1.2 mg	1.2 mg

## FEEDING RECOMMENDATION Müsli

To be fed as supplement to conventional basic feed, **approx. 200 - 350 g per 100 kg** body weight and day. This overall quantity should be offered in different portions. With lower dosage or supply shortages, we recommend adding Glucogard or MicroVital.

## FEEDING RECOMMENDATION Pellet

**Approx. 200 - 350 g per 100 kg** body weight and day. Do not supplement the diet of horses with an increased energy requirement (performance horses) with grain, but for example with Struktur-Energetikum and vegetable oil. Gradually increase the dosage.

This supplement feed contains more vitamins and trace elements than conventional basic feed. Please stick to the feeding recommendation.

1 liter = approx. 400 g Equigard Müsli  
1 liter = approx. 800 g Equigard Pellet

A photograph of two polo players on dark brown horses, wearing helmets with the German flag and 'USC' logos, and red and white jerseys. They are in a dynamic pose, splashing mud on a dirt field. The background shows a fence and a sign with '10 Mar. 3.'.

# More than just an ordinary pellet

Most of the boarding stables feed their horses the classical way: roughage, oats and pellets. It's positive when with that all important vital substances are delivered that are essential for a healthy horse diet. Our whole grain pellets perfectly match the requirements of particularly bigger herds!



# Vollwertpellets

Efficient all-round

"stable pellet"



Paper sack 25 kg

**Cold-pressed pellet, rich in vital nutrients, designed for all breeds and purposes.**

- wholesome and especially easy digestible
- cold-pressed and free from bonding agents
- efficient and free from oats
- contains herbs, oils and oleaginous fruits

### Feeding can be that simple

St. Hippolyt's whole grain pellets are designed as exclusive complement to be fed together with roughage and component feed. Their extremely high digestibility and rich nutrient, vitamin and mineral content make them the perfect feed to covering the nutritional requirements of horses of all breeds and all equestrian disciplines. Our whole grain pellets are free from oats, thus making them suitable even for lively horses, but they can also be fed together with oats or muesli.

### Wholesome means cold-pressed

Our production is based on the whole-food principle with an especially gentle pressing procedure at temperatures below 40°C. This ensures that all the valuable native ingredients such as plants' own enzymes, vitamins and phytochemicals are preserved. The pellets do neither contain any bonding agents.

In conjunction with the pellets' highly digestible macro-structure, all the disadvantages commonly associated with the pelleting procedure can be avoided. Our whole grain pellets have efficiently revolutionized the bad reputation of pelleted feeds. Horses love this all-round feed that even stimulates a more intensive chewing. More than 150 individual components provide a rich source of individually required nutrients the horses benefit from to balance individual deficiencies in their general diet.

### Economic feeding

Long years of study in large stocks of horses have revealed that horses being fed St. Hippolyt's whole grain pellets show better feed conversion ratio. The lower quantity in component feed protects the digestive system, promotes overall well-being and willingness to perform, an even temper and easy riding. Besides, it helps horses to more easily cope with shedding and stress.

### COMPOSITION

#### VOLLWERTPELLETS

Barley flakes, alfalfa fibre, wheat bran, oat bran, oil seed mixture (linseed, sunflower, rape) 7%, sugar beet fibre, dried apple, corn germ, herbs (peppermint, rosemary, fennel, chamomile, fenugreek seeds) 2.2%, barley germ, grape seed extract, calcium carbonate (maritime and mineral), corn flakes, sugar beet molasse, malt-yeast-mixture, salt, brewer's yeast

### COMPOSITION

#### VOLLWERTPELLETS LIGHT

Barley flakes, wheat bran, oat bran, alfalfa fibre, oil seed mixture (linseed, sunflower, black cumin seed, fennel seed) finely ground 7.5%, sugar beet fibres, corn germ, warm air-dried chopped grass, dried apple, herbs (peppermint, fennel, rosehip, coriander, sage, oregano, marjoram) 2.5%, barley germ, calcium carbonate (maritime and mineral), salt, corn flakes, brewer's yeast, sugar beet molasses, grape seed extract, magnesium fumarate, linseed-/sunflower oil cold-pressed 0.1%

	VOLLWERTPELLETS	LIGHT
<b>INGREDIENTS</b>		
Raw protein	10.2	10.4 %
Raw fibre	12.6	13.0 %
Raw fat	3.8	3.7 %
Raw ash	9.0	8.5 %
digestible raw protein	86	86 g/kg
digestible energy	10.5	10.5 MJ/kg
Starch	19.5	19.2 %
Sugar	4.0	3.9 %
Calcium	1.1	1.0 %
Phosphorus	0.5	0.5 %
Magnesium	0.3	0.3 %
Sodium	0.5	0.5 %

### NUTRITIONAL ADDITIVES per kg

Vitamin A	15,000	15,000 IE
Vitamin D3	1,600	1,600 IE
Vitamin E	80	80 mg
Vitamin B1	10	10 mg
Vitamin B2	10	10 mg
Vitamin B6	5	5 mg
Vitamin B12	40	40 mcg
Biotin	330	330 mcg
Nicotinic acid	50	50 mg
Folic acid	6	6 mg
Pantothenic acid	20	20 mg
Choline chloride	450	450 mg

### TRACE ELEMENTS per kg

Iron	100	100 mg
Zinc	150	150 mg
Manganese	75	75 mg
Copper	30	30 mg
Iodine	1.5	1.5 mg
Cobalt	1.5	1.5 mg
Selenium	0.5	0.5 mg

### FEEDING RECOMMENDATION VOLLWERTPELLETS / VOLLWERTPELLETS LIGHT

To be fed as supplement to conventional basic feed including roughage and/or pasture grass, **approx. 500 - 800 g per 100 kg** body weight and day. This overall quantity should be offered in different portions. With lower dosage or supply shortages, we recommend adding Semper-Min or MicroVital.

1 liter = approx. 750 g Vollwertpellets

1 liter = approx. 750 g Vollwertpellets Light



# New vital nutrients in equine feed

## Why do horses need nucleotides?

The term nucleotide refers to the natural building blocks of the genetic substance DNA and its carrier molecules which are made from RNS (ribonucleic acid). The horse's future appearance - but also its performance capability and most of the other individual properties - most of these features are already fixed in the nucleus of the DNA long before the birth in form of a genetic code. The metabolism finally gets this genetic potential started. The RNS-molecules are the link between DNA and metabolism as they transmit the orders of the DNA to the metabolic system. DNA and RNS depend on each other to organize all metabolic processes. No life would be possible without nucleotides, DNA and RNS.

## New cells need new DNA and RNS

In order to regularly renew and to let cells and tissue grow, a sufficient quantity of nucleotides as central building blocks for producing DNA and RNS has to be provided. Part of it is newly synthesized in the body, another part is salvaged from the DNA of worn body cells and from the cells of forage plants.

## When should nucleotides be supplemented with the feed?

Normally the inner and outer nucleotide sources are sufficient. In case of high physical demands, illness or maternity, the nucleotides can run short. In order to support the horse with such challenging situations, it makes sense to supplement the conventional feed with nucleotides as the horse can only digest a small amount of nucleotides derived from forage plants.

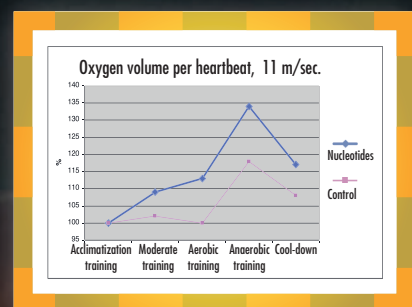
## What is special about PSB®-complex?

The PSB®-complex represents a particularly high-developed form to supplement conventional feed with nucleotides. Following decades of research, it is now possible to exactly adapt the composition of the nucleotides in the PSB®-complex to its individual physiological purpose. Only then is it possible to successfully benefit from nucleotide supplementation with high performance horses or for regenerative effects.

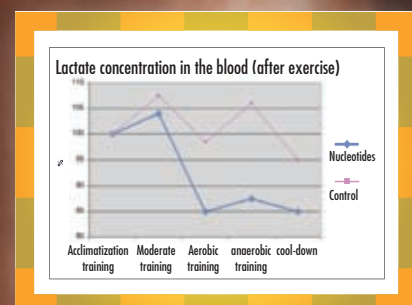
## The positive effects of supplementing PSB®-nucleotides:

- an improved oxygen utilization in the desired aerobic zone
- enhanced work of the muscles in the aerobic zone (see figure 1)
- more efficient work of the heart
- substantially decreased production of lactate (see figure 2)
- reduced release of stress hormones
- reduced liver stress
- increased immune status

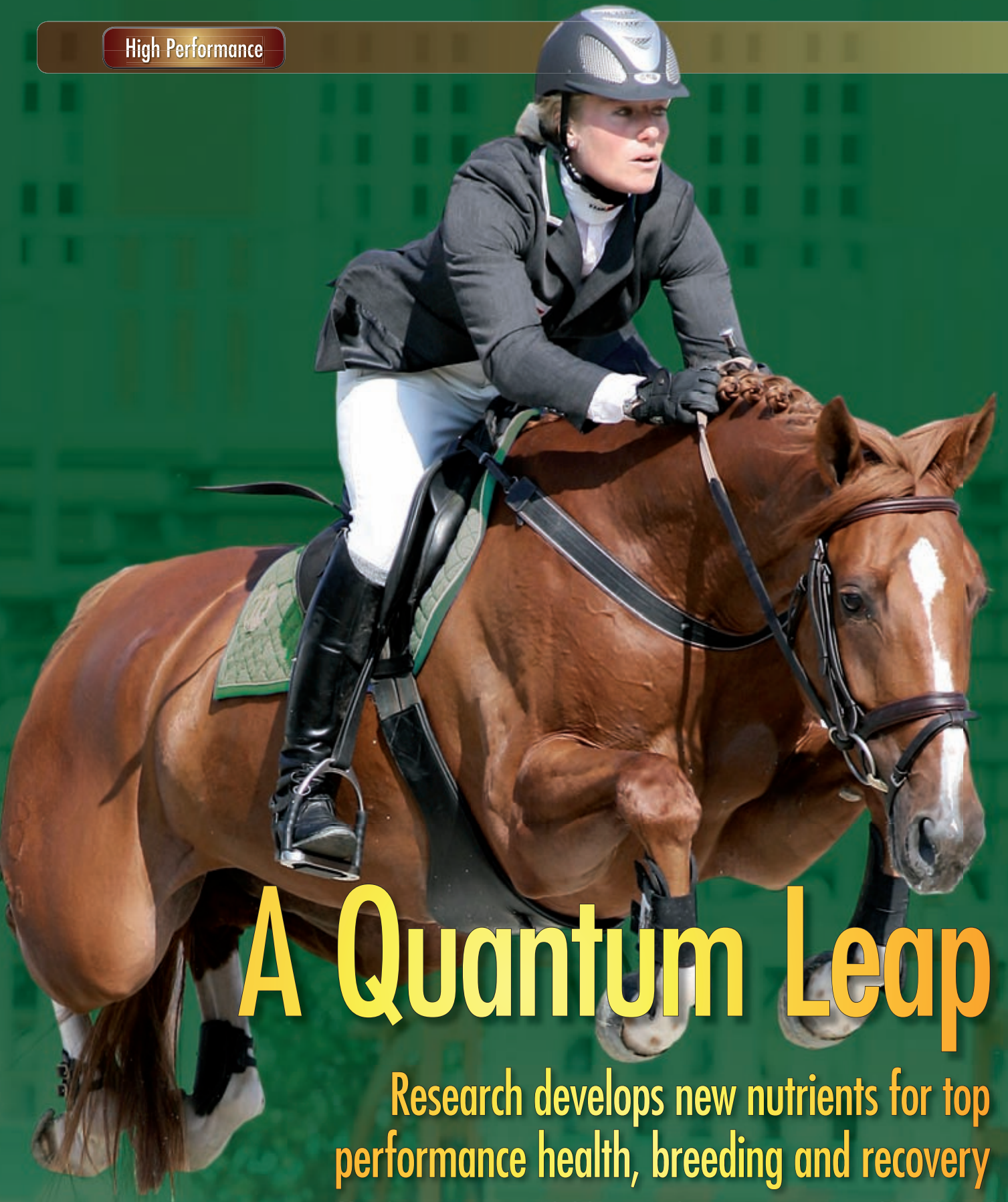
Examples taken from sports-physiological measurements on a highspeed treadmill (University of Liège); the conventional feed of six horses was supplemented by the PSB®-complex („nucleotides“) for four weeks. Five horses were not fed with the PSB®-complex („control“) under otherwise identical conditions.



**Figure 1:** The heart of the horses fed with the PSB®-complex („nucleotides“) continuously pumped more blood per heartbeat through the muscles which proves to result in better muscle work in the aerobic zone.



**Figure 2:** Horses being fed the PSB®-complex („nucleotides“) produced considerably less lactate after performance. This is an obvious sign to reduce muscle fatigue.



# A Quantum Leap

Research develops new nutrients for top performance health, breeding and recovery

Many horse owners want their horses to show top performances with the horses' cells vibrating with power and energy, combined with effective regenerative properties and excellent work ethic. Nucleotides, the basic structural units of the cells, support this power as well as balance. The DNA-strand of an individual cell of a horse has a length of one metre, and three billion nucleotides are necessary for a proper cell division process. The body's own provision of nucleotides is insufficient in times of performances and stress and has to be supplemented with nutrition - this is how the horses will brilliantly cope with challenging situations.

# Super Condition High Performer



Bucket 3 kg

**High Performer combines the essential nutrients and vital substances of Super Condition with the special properties of the PSB®-complex and oligopeptides.**

The oligopeptides of High Performer are short fragments of natural protein and have been identified in long years of fundamental research at an American university. The combination with the PSB®-nukleotides results in an improved exploitation of the horse's performance and development potential.

## Feeding of High Performer

In combination with a well-adapted basic and supplementary feed, High Performer may contribute to impressive feeding successes. High Performer is of great advantage for all kinds of equestrian disciplines. We recommend the following purposes:

### High Performer for sports horses:

The added PSB®-nukleotides enhance the regeneration of the intestine's inner wall. Feeding High Performer is beneficial for the critical intestinal stability and feed conversion of high performance horses. Feeding studies with active sports horses delivered measurable successes:

- improved stamina and top performances
- more reserve power in the collection
- more balance and willingness to work
- less exhaustion and organic wear
- enhanced regenerative capability
- reduced susceptibility to infection

### High Performer in breeding:

- supports the embryonic development and formation of tissue during pregnancy
- improves the physical constitution of weak and exhausted mares
- boosts milk production in case of lactation problems

### High Performer for recovery:

- faster recovery after colic and serious operations
- supports the immune system in case of infections
- supports tissue repair in case of wear and tear

## COMPOSITION

Wheat germ, yeast extract (PSB®-complex), protein hydrolyzate, whole grain barely flakes - ground, malt-yeast-flavour, oil mixture (linseed, sunflower), oil seed mixture (linseed, sunflower, black cumin seed) - finely ground, magnesium (as fumarate, oxide), brewer's yeast, carrots, calcium carbonate (maritime and mineral), garlic, pea protein

## INGREDIENTS:

Raw protein	24.0 %
Raw fibre	4.0 %
Raw fat	8.0 %
Raw ash	10.0 %
digestible raw protein	192 g/kg
digestible energy	12.5 MJ/kg
Starch	18.0 %
Sugar	1.5 %

Calcium	1.3 %
Phosphorus	0.6 %
Magnesium	2.0 %
Sodium	0.1 %

Lysine	0.7 %
Methionine	1.2 %

## NUTRITIONAL ADDITIVES per kg

Vitamin A	45,000 IE
Vitamin D3	5,000 IE
Vitamin E	1,300 mg
Vitamin C	5,000 mg
Vitamin B1	2,500 mg
Vitamin B2	4,800 mg
Vitamin B6	2,500 mg
Vitamin B12	500 mcg
Biotin	650 mcg
Nicotinic acid	150 mg
Folic acid	12 mg
Pantothenic acid	60 mg
Choline chloride	2,000 mg

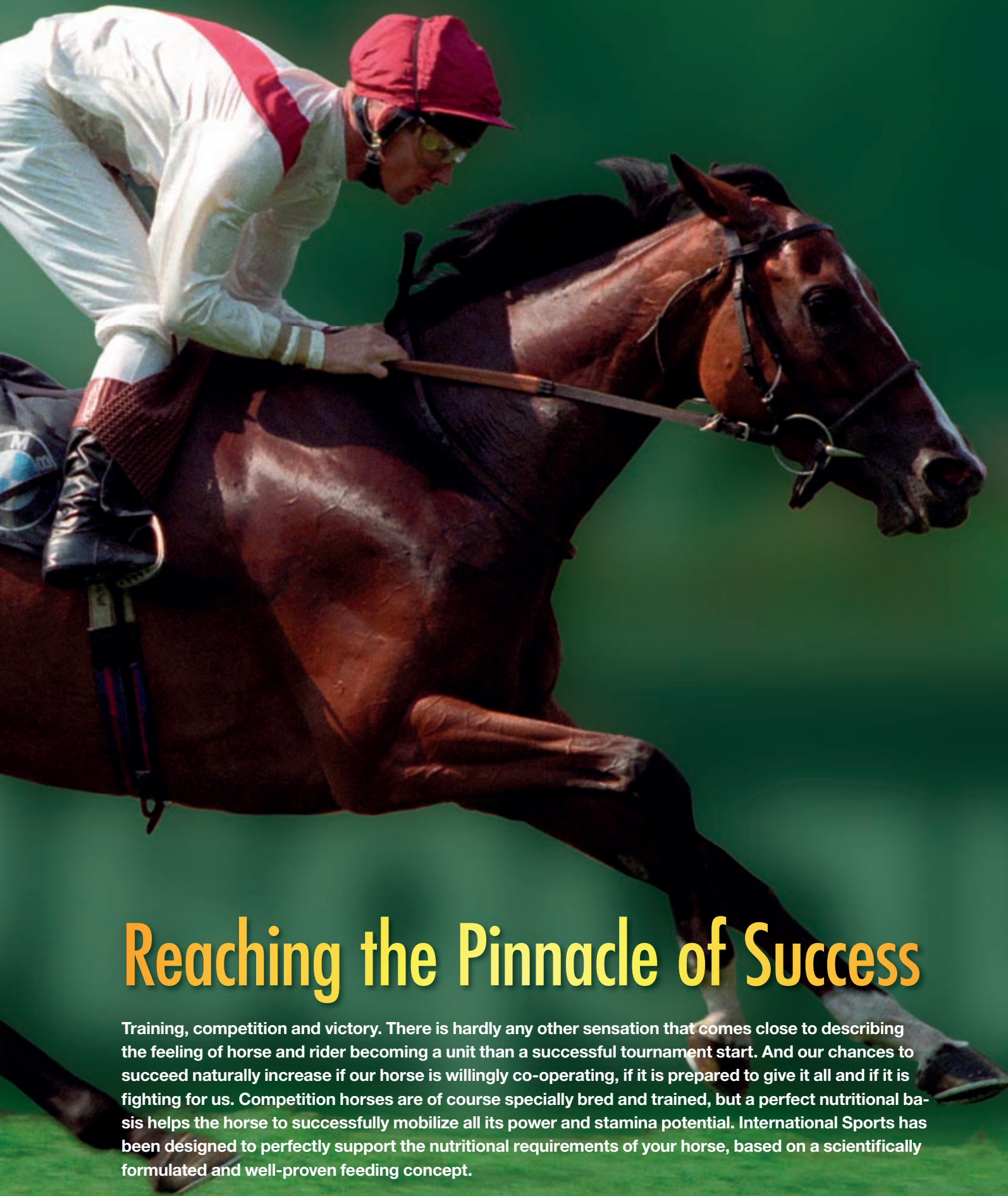
## TRACE ELEMENTS per kg

Iron	200 mg
Zinc	1,800 mg
Manganese	700 mg
Copper	175 mg
Iodine	2.0 mg
Cobalt	30.0 mg
Selenium	1.1 mg

## FEEDING RECOMMENDATION:

**Approx. 15 g per 100 kg** body weight and day mixed up with the usual daily ration of concentrated feed. In times of high performances, the quantity may be doubled.

1 litre = approx. 750 g High Performer



# Reaching the Pinnacle of Success

Training, competition and victory. There is hardly any other sensation that comes close to describing the feeling of horse and rider becoming a unit than a successful tournament start. And our chances to succeed naturally increase if our horse is willingly co-operating, if it is prepared to give it all and if it is fighting for us. Competition horses are of course specially bred and trained, but a perfect nutritional basis helps the horse to successfully mobilize all its power and stamina potential. International Sports has been designed to perfectly support the nutritional requirements of your horse, based on a scientifically formulated and well-proven feeding concept.

# International Sports Champions Claim

Scientifically proven  
high-performance feed



Paper sack 20 kg

**Champions Claim has been developed in co-operation with the well-known Kentucky Equine Research Institut (KER). The feed formula is based on sound research results that have proven themselves at Olymic Games, in racing and endurance riding.**

- muscle-supporting essential nutrients
- including 300 mg natural Vitamin E per kg
- free from herbs, high level of acceptance
- including ground algae, oils and oleaginous fruits

KER's research efforts are conducted with the aim to improve the horses' health and physical constitution. In co-operation with horse owners and partners from the horse feed industry, KER uses its knowledge and the results of its own horse performance research to adapt these findings in practice. St. Hippolyt as the corresponding partner in Germany, and KER have developed the high-performance feed Champions Claim together. Maximum sports performances require power and stamina, but also the ability to concentrate and good nerves.

## Scientifically proven

St. Hippolyt horse feeds only contain moderate amounts of starch. KER confirms our approach - horse feeds that are high in starch and that consequently have a high glycemic index, unnecessarily elevate the blood sugar and are responsible for insulin-related fluctuations in performance, loss of condition and lack of energy reserves.

A horse feed that is moderate in starch, however, high in fat and fibre, only slightly raises the muscle lactic acid and carbon dioxide production. The results are an improved heart and endurance performance, reduced sweat losses, improved breathing and a reduction of digestive problems. The reduced insulin release and the associated lower increase in cortisol improve stress tolerance and promotes a calm temper.

## One product – three different kinds of application

Champions Claim is the perfect horse feed for horses competing in disciplines such as dressage, jumping, eventing, western riding or driving that require an aerobic-anaerobic muscle metabolism. In combination with oils or cereals, it is possible to increase the supply of fat and protein in order to adapt to the respective energy requirements.

### Champions Claim + oil

Endurance riding requires a high level of stamina and a lot of oxygen over hours. To prevent the hyperacidity of the muscles, it is of advantage to feed the horses a low-glycemic product with a reduced amount of carbohydrates. Champions Claim is fed in combination with high-quality oils such as HippoLinol.

### Champions Claim + cereals

For highest performances on the race track, Champions Claim is fed with cereals such as C'Real Basics Dynamic. Highly digestible carbohydrates provide the required energy for an anaerobic muscle metabolism.

## COMPOSITION

Barley flakes, corn flakes, sugar beet fibre, whole grain oats 10%, sugar beet molasses, alfalfa fibre, oil seed mixture (linseed, sunflower seeds) 5%, oil mixture (corn germ-, linseed-, sunflower oil) 3%, dried apple, wheat bran, corn germ, apple syrup, warm air-dried chopped grass, Himalayan salt, wheat germ, calcium carbonate (maritime and mineral), algae powder, brewer's yeast, fruit vinegar

## INGREDIENTS

Raw protein	11.0 %
Raw fibre	8.0 %
Raw fat	7.0 %
Raw ash	7.0 %
digestible raw protein	92 g/kg
digestible energy	12.5 MJ/kg
Starch	23.6 %
Sugar	8.2 %
Calcium	1.2 %
Phosphorus	0.5 %
Magnesium	0.3 %
Sodium	0.4 %

## NUTRITIONAL ADDITIVES per kg

Vitamin A	11,000 IE
Vitamin D3	1,100 IE
Vitamin E	320 mg
Vitamin B1	10 mg
Vitamin B2	13 mg
Vitamin B6	6 mg
Vitamin B12	35 mcg
Biotin	400 mcg
Nicotinic acid	60 mg
Folic acid	4 mg
Pantothenic acid	20 mg
Choline chloride	800 mg

## TRACE ELEMENTS per kg

Iron	200 mg
Zinc	120 mg
Manganese	100 mg
Copper	40 mg
Iodine	0.7 mg
Cobalt	0.1 mg
Selenium	0.5 mg

## FEEDING RECOMMENDATION

**Approx. 500-700 g per 100 kg** body weight and day. This overall quantity should be offered in different portions.

Higher requirements in energy can be covered for example with oats, C'Real, Struktur-Energetikum, HippoLinol or alfalfa mix.

1 litre = approx. 550 g Champions Claim



Despite a perfect feeding, our horse sometimes misses a bit more power. Especially before important competitions - if it comes down to it - at the end of an exhausting tournament weekend, during the covering season, during stallion presentations. There are certainly more examples worth being mentioned. In situations like this, a performance booster would be welcome which should, however, still preserve the horse's suppleness.

A rider in a blue jacket and helmet is jumping a white horse over a bar. The horse is in mid-air, with its front legs tucked and its body arched. The rider is leaning forward, holding the reins. The background is a blurred outdoor setting.

# Higher, Further, Faster



# QElan

## Biointelligent Nutrition



Bottle 600 g

### A liquid performance booster of the new generation - with turbo factor

- energy boost from the mitochondria
- preserving the physical strength by protecting muscles, nerves and tissue
- high bioavailability through lecithin micelles

#### Energy from the mitochondria

The work of the muscles and of all organs of the horse depends on the energy supply from millions of mitochondria. By processing the nutrients stored in the component feed with the help of oxygen, these tiny little cellular power plants produce the ATP (adenosine triphosphate) required for the work of the muscles and for the metabolism. It makes no sense to offer a performance horse high-energy feed when at the same time the mitochondria do not perfectly work. Functional vital substances like particularly all B vitamins, L-carnitine and enzyme components like coenzyme Q10 support the work of the mitochondria and may thus bring too early tiring horses a new energy boost.

In order to produce energy, the mitochondria constantly process high amounts of oxygen compounds, provid-

ing an abundant target for oxygen radical attacks. The presumed role of antioxidants is to neutralize free radicals. A deficiency in antioxidants leads to an increased mitochondrial decay. QElan contains antioxidants like natural vitamin E, C, selenium and coenzyme Q10, either in direct form or added as a yeast extract component. All these antioxidants are – like all other QElan-ingredients – available as highly-digestible lecithin micelles which considerably improves the frequently difficult bioavailability of vital substances (“turbo factor”). Equine scientific studies from Kentucky substantiated the efficacies of QElan. The studies showed a significantly higher absorption of vitamin E in the blood for the supplementation with vitamin E micelles than with conventional vitamin E.

#### Protection for muscles and organs

The intensive metabolism of active competition horses and breeding stock inevitably leads to the production of cellular harmful oxygen radicals in the organism. Without a healthy antioxidant protection mechanism of the tissue, early damages in tissue might be the result. The cellular vitality in general benefits from the mentioned antioxidants in QElan: in the muscles, in the blood vessels, in the reproductive tract, in the nervous system, in the lungs and in all other organs. This also considerably counteracts the loss of power, nervousness, infertility, loss of tissue mass and early ageing symptoms. Especially elder competition horses and breeding stock will benefit from QElan.

#### COMPOSITION

Malt-yeast-flavour, fructose concentrate, lecithin, carnitine, fruit vinegar

#### INGREDIENTS

Raw protein	1.0 %
Raw fat	3.5 %
Raw fibre	0.5 %
Raw ash	1.4 %
Calcium	0.1 %
Phosphorus	0.1 %
Total sugar	58.0 %

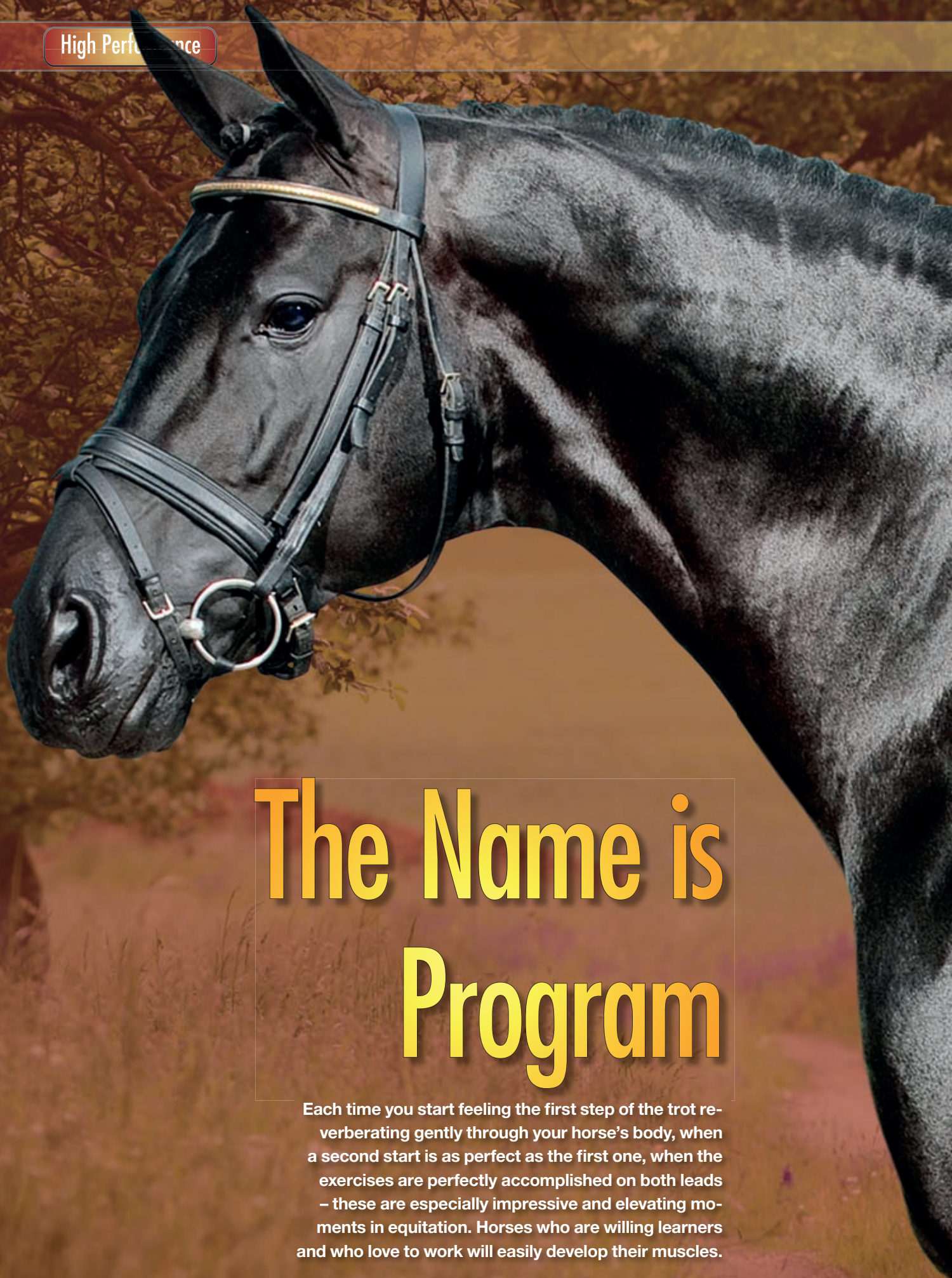
#### NUTRITIONAL ADDITIVES per kg

Vitamin E	50,000 mg
Vitamin C	500 mg
Vitamin B1	15 mg
Vitamin B2	12 mg
Vitamin B6	8 mg
Vitamin B12	40 mcg
Biotin	300 mcg
Nicotinic acid	2,500 mg
Pantothenic acid	30 mg
Folic acid	1 mg

#### FEEDING RECOMMENDATION

We recommend **30 g per day** for **large horses** (approx. 2 table spoons)

For peak performances up to **max. 50 g per day** Just add the required amount to the feed or water on the day of the performance requirement (if possible, 30 minutes before the start time).



# The Name is Program

Each time you start feeling the first step of the trot reverberating gently through your horse's body, when a second start is as perfect as the first one, when the exercises are perfectly accomplished on both leads – these are especially impressive and elevating moments in equitation. Horses who are willing learners and who love to work will easily develop their muscles.

# Super Condition

Concentrated natural ingredients for high performers



Paper sack 20 kg, bucket 10 kg

Well-developed and well working muscles are an absolute necessity for succeeding in any sport. However, only relaxed muscles that are well supplied with blood can be efficiently developed to increase a horse's strength and endurance. SuperCondition has been specifically formulated to provide high performing horses with a constant supply of energy and the exact nutrients needed for efficient muscle metabolism.

- rich in antioxidant vitamins
- rich in minerals important to the muscle function
- enriched with high-quality protein
- enhancing and protecting formula - all in one

## Making horse riding easier

A well-balanced muscle metabolism reduces the time needed to warm up. This means muscles can be built faster during training, thus enabling daily performances to be improved faster with a minimum of physical decline. A healthy muscle metabolism furthermore ensures that waste products inside the muscles, for example lactic acid, are removed quickly, that recovery times are reduced and that the motivation for the training stays high, increasing both, general performance and stamina.

## When a basic feed is not enough

SuperCondition has been specifically formulated to provide all of the nutrients vital to an efficient muscle function which tend to be severely lacking from most horses' normal daily diets. Horses whose muscles have to work extremely hard or who are genetically endowed with a lot of muscles, need a higher dose of nutrients to build and to protect muscles. A lack of these special nutrients can cause muscle tension, hardening and even tearing, and thus cause permanent damage to muscles, tendons and joints. SuperCondition is ideally suited for addressing such deficiencies and is suitable for both temporary and long term use.

## A feed with obvious results

Its high-quality ingredients and specially selected range of minerals and vitamins make SuperCondition ideal for feeding as concentrate. SuperCondition will generate visible results even when fed in quantities of only a few hundred grams a day. SuperCondition has proven particularly effective as a concentrate supplement for demanding dressage horses and breeding stallions during the stallion licensing or breeding times. But also pleasure riders appreciate if their horse is willingly working and without any problems in rideability.

## COMPOSITION

Corn germs 25%, whole grain barley flakes - ground, malt-yeast-flavour, oil seed mixture (linseed, sunflower, fennel seed) finely ground, 5%, apple syrup, linseed-/sunflower oil cold-pressed 2.8%, salt, grape skin, herbs (rosemary, hawthorn) 2%, algae powder, brewer's yeast, magnesium acetate, curcuma, grape seed extract, calcium carbonate (maritime and mineral)

## INGREDIENTS

Raw protein	14.0 %
Raw fibre	6.0 %
Raw fat	10.0 %
Raw ash	9.0 %
digestible raw protein	99 g/kg
digestible energy	13 MJ/kg
Starch	20.0 %
Sugar	3.9 %
Calcium	0.9 %
Phosphorus	0.5 %
Magnesium	0.3 %
Sodium	1.2 %
Lysine	1.3 %
Methionine	0.8 %

## NUTRITIONAL ADDITIVES per kg

Vitamin A	24,000 IE
Vitamin D3	2,600 IE
Vitamin E	2,000 mg
Vitamin C	5,000 mg
Vitamin B1	15 mg
Vitamin B2	15 mg
Vitamin B6	7 mg
Vitamin B12	50 mcg
Biotin	270 mcg
Nicotinic acid	55 mg
Folic acid	7 mg
Pantothenic acid	26 mg
Choline chloride	550 mg

## TRACE ELEMENTS per kg

Iron	180 mg
Zinc	300 mg
Manganese	460 mg
Copper	25 mg
Iodine	2.0 mg
Cobalt	6.0 mg
Selenium	1.1 mg

## FEEDING RECOMMENDATION

Approx. 50-100 g per 100 kg body weight and day mixed with the daily component feed

1 litre = approx. 800 g SuperCondition

There is nothing comparable to symbolize a horse's power, speed and beauty than expressive and well-defined muscles. Powerful and resilient muscles are also the basis for outstanding performances in sport and responsible for an enjoyable ride when out just for fun. Hence horses will considerably benefit from the selected supply of vital nutrients that will support the muscle building exercises to flourish.

# Muscle Power

# St. Hippolyt Gold Medal

## Vital nutrients for a proper muscle growth



Bucket 10 kg

**It is a question of the individual hereditary disposition that every horse is capable of developing efficiently working muscles. The horse's training should not only match its individual capabilities, it should also be fed enough functional vital nutrients to create a sound physical basis.**

- supporting the growth of muscles
- enhancing muscle strength
- approved for competition and show horses
- no doping

### Protein, amino- and fatty acids

There is nothing better to support building muscle substances than high-quality protein. The protein in the common feed crops like hay or grain is not ideal. A feed concentrate to enhance the muscle development should contain supplementary protein sources and amino acids to upgrade the overall protein. With a particularly processed brewer's yeast, spirulina algae, a fermentationally created malt-yeast-extract, ground algae and supplemented L-lysine, St. Hippolyt's Gold Medal contains these muscle producing components in a highly-digestible form. Besides the protein components, fat substances derived from grain germs and oil seeds contribute to the natural development

of the involved hormones. The essential fatty acids from cold-pressed linseed oil enhance the muscles' suppleness, too.

### Vital nutrients for the basic metabolism

The equine metabolism requires certain building blocks to properly compile all components for the muscle growth. These tools are specifically suited enzymes that build up and link the muscle fibrils and connect them with stabilizing conjunctive tissue fibres. However, the enzymes' capability depends largely on functional vital nutrients, such as the B-complex vitamins and trace elements like zinc, manganese, copper and silicon. St. Hippolyt's Gold Medal is particularly formulated to provide these vital nutrients in a perfectly balanced proportion. To optimize the overall metabolic function, most of the included trace elements are available as organically bound complex. Active ingredients like milk thistle, curcuma and brewer's yeast support the function of the liver as the major metabolic organ.

### Muscle development requires muscle protection

Initial training and competitions accelerate the metabolism which leads inevitably to the production of oxygen radicals that attack and partly destroy the muscle tissue. Special endogenous enzymes that depend on the existence of trace elements such as zinc, copper, manganese and selenium neutralize these scavengers and ensure the protection of the tissue. Besides these micronutrients, St. Hippolyt's Gold Medal provides the horse with additional tissue-protecting substances like algae, herbs, brewer's yeast, carrots and natural vitamin E.

St. Hippolyt's Gold Medal is an effective combination of physiologically co-operating substances to develop, to run and to protect completely well-working muscles.

### COMPOSITION

Grain germs 75%, brewer's yeast 7.2%, spirulina algae 7%, herbs (holy thistle, curcuma, cinnamon, coriander, marjoram) 5%, malt-yeast-flavour, carrots, apple syrup, linseed 0.5%, sugar beet molasses, algae powder, linseed-/sunflower oil mixture cold pressed 0,15%, salt, wheat bran, garlic

### INGREDIENTS

Raw protein	17.0 %
Raw fibre	20.0 %
Raw fat	15.0 %
Raw ash	14.0 %
digestible raw protein	144 g/kg
digestible energy	15 MJ/kg

Calcium	4.5 %
Phosphorus	1.5 %
Magnesium	0.1 %
Sodium	0.4 %

Lysine	1.3 %
--------	-------

### NUTRITIONAL ADDITIVES per kg

Vitamin E	2,000 mg
Vitamin B1	60 mg
Vitamin B2	70 mg
Vitamin B6	40 mg
Vitamin B12	160 mcg
Biotin	1,200 mcg
Nicotinic acid	240 mg
Folic acid	20 mg
Pantothenic acid	100 mg
Choline chloride	500 mg

### TECHNOLOGICAL ADDITIVE:

Diatomaceous earth


### TRACE ELEMENTS per kg

Zinc	270 mg
Manganese	275 mg
Copper	45 mg
Selenium	0.7 mg

### FEEDING RECOMMENDATION

**Approx. 40 g per 100 kg** body weight and day for the build-up. Sufficient for the preservation **approx. 20 g per 100 kg** body weight.

For the perfect muscle function of high-performance horses - in particular for their suppleness and their endurance - we recommend the combination of SuperCondition and/or QELAN.



High-quality and aromatic roughage, rich in the different kinds of grasses, is not only delicious for horses, but also necessary for survival. A regular, properly adapted supply of roughage guarantees the horse's well-being and health. A perfect quality in roughage protects the immune system and is beneficial for the intestinal system. Roughage is considered alkaline-forming, it promotes the regeneration of muscles and joints and has deacidifying properties that are essential for sports horses.

## Top Quality Roughage - Best of Health

# St. Hippolyt Luzerne Mix

High-quality, shredded roughage



Plastic sack 20 kg

St. Hippolyt's Luzerne Mix is a hygienically processed dried product, made from alfalfa and green oats. The continuously high quality ensures that it is versatile and easy to use.

- dried with the greatest of care to preserve the valuable nutrients
- largely dust-free and very hygienic
- continuous high quality - no matter what season
- shredded form stimulates appetite
- rich in energy

St. Hippolyt's Luzerne MIX contains more amino acids, raw fibres and fat than conventional hay and is even richer in energy carriers – and consequently ideally suited as a feed for competition and breeding horses. Daily grain rations can be reduced and the digestibility increased at the same time. Mixing St. Hippolyt's shredded alfalfa with the concentrated feed will increase the volume of the daily ration, it will stimulate chewing and thus support digestion.

# Pre Alpin Wiesencobs

Alpine goodness in the feedbag



Paper sack 25 kg

Pre ALPIN Wiesencobs is a totally natural product, containing more than 60 different types of grasses and herbs grown in the Bavarian foothills of the Alps. The special harvesting methods and the smooth, careful drying procedure prevent a nutrient-consuming secondary fermentation. It preserves the grass' leaves and seeds' integrity – thus producing a hygienically high-quality basic feed that provides your horse a unique biodiversity.

- rich in raw fibres, herbs and grasses
- with natural essential oils
- dried straight after harvesting, without compression additives
- dust- and molasses-free
- extra large cobs 18 mm Ø

The plant structure is still clearly visible after pressing. Warm air-drying largely prevents the growth of moulds and their toxic metabolic waste products that are frequently known with low-quality hay and silage. Horses suffering from allergies and those with a sensitive digestive system benefit from the significantly better hygiene and the dust-free final product.

## COMPOSITION LUZERNE Mix

50% alfalfa (young, fresh, shredded), 30% green oats, 10% clover, 5% molasses, 5% plant oils

## Composition WIESENCOBS

Grasses and herbs

INGREDIENTS	LUZERNE	COBS
Raw protein	12.0 %	9.9 %
Raw fibre	32.0 %	27.0 %
Raw oil and fat	2.4 %	2.4 %
Raw ash	10.9 %	9.6 %
digestible raw protein	82 g/kg	79.9 g/kg
digestible energy	10.5 MJ/kg	7.9 MJ/kg
Fructan		3.3 %
Starch and sugar	10.0 %	
Calcium	1.2 %	0.9 %
Phosphorus	0.3 %	0.3 %
Magnesium	0.3 %	0.3 %
Sodium	0.1 %	
Kalium	2.1 %	
Vitamin D3	980 IE	
Vitamin E	110 mg	
Carotin	112 mg	

## TRACE ELEMENTS per kg

Sulfur	2,000mg	
Iron	615 mg	
Zinc	22 mg	36.0 mg
Manganese	33 mg	171.0 mg
Copper	9 mg	9.8 mg
Selenium	0.3 mg	0.01 mg

## FEEDING RECOMMENDATION LUZERNE Mix

Approx. 150-500 g per 100 kg body weight and day in addition to the usual basic feed of hay/straw/grass.

Luzerne-Mix can be offered as substitute for concentrated feed and cereals.

## FEEDING RECOMMENDATION WIESENCOBS

- replacing the basic feed: **1.2 to 1.5 kg per 100 kg** body weight and day
- to upgrade the basic feed: adapt the quantity to the usual amount of basic feed
- replacing concentrated feed: 1.2 kg Wiesencobs can replace approx. 1 kg cereals

1 kg Pre Alpin Wiesencobs can replace 1 kg hay. Start slowly and increase gradually or soak 1 kg in 1.5 - 3 liter water.

Soak Pre Alpin Wiesencobs in water to satisfy the roughage requirements of horses suffering from tooth or chewing problems. This is especially recommended for seniors to counteract loss in weight. Pre Alpin has been designed as an appropriate alternative to roughage or to upgrade the daily hay or silage ration or to substitute the concentrated feed for horses on a low or grain-free diet. The positive effects on digestion and dietary condition will already become visible if big horses are fed 2 kg per day.

1 litre = approx. 200g Pre Luzerne Mix

1 litre = approx. 600 g Pre Alpin Wiesencobs





# Vital Mare — Healthy Foal

**With their charming, childlike behaviour, foals bring a lot of happiness into our hearts.**

**A study found that almost one in three of adolescent horses in Germany suffers from osteochondritis dissecans (OCD), a detachment of cartilage particles. Diseases related to this include bone chips and joint mice. The causes are to be found both, as a low as well as an over-supply in:**

- lack of movement
- excessive body weight
- feed rich in starch
- insufficient mineralization and supply of trace elements (copper)

#### **Trace elements as a basis**

The future health of a foal is decided in its mother's womb. The well-being and health of a young horse is closely linked to the health and vitality of the mare.

Here, the right nutrition plays a crucial role: Research has shown that there is an increased demand for trace elements in the last third of gestation and that the nutrients are released into the liver of the fetus at this crucial point.

For example with copper it showed that a foal with good copper reserves can later make repairs to its own musculoskeletal system.

The total amount and the relationships between the trace elements determine the length (zinc) and stability (copper and manganese) of the bones of the fetus. In cases where there has been an incorrect supply of trace elements, a direct impact on the development of the musculoskeletal system can be observed.

#### **Thoroughbred breeding provides insights**

For many years St. Hippolyt has dedicated itself to the feeding of breeding horses. In close co-operation with leading German thoroughbred stud farms, of which some have produced Derby

winners, and according to the latest nutritional findings, St. Hippolyt has developed a demand-optimized feeding system for pregnant mares and their offspring

#### **Equilac:**

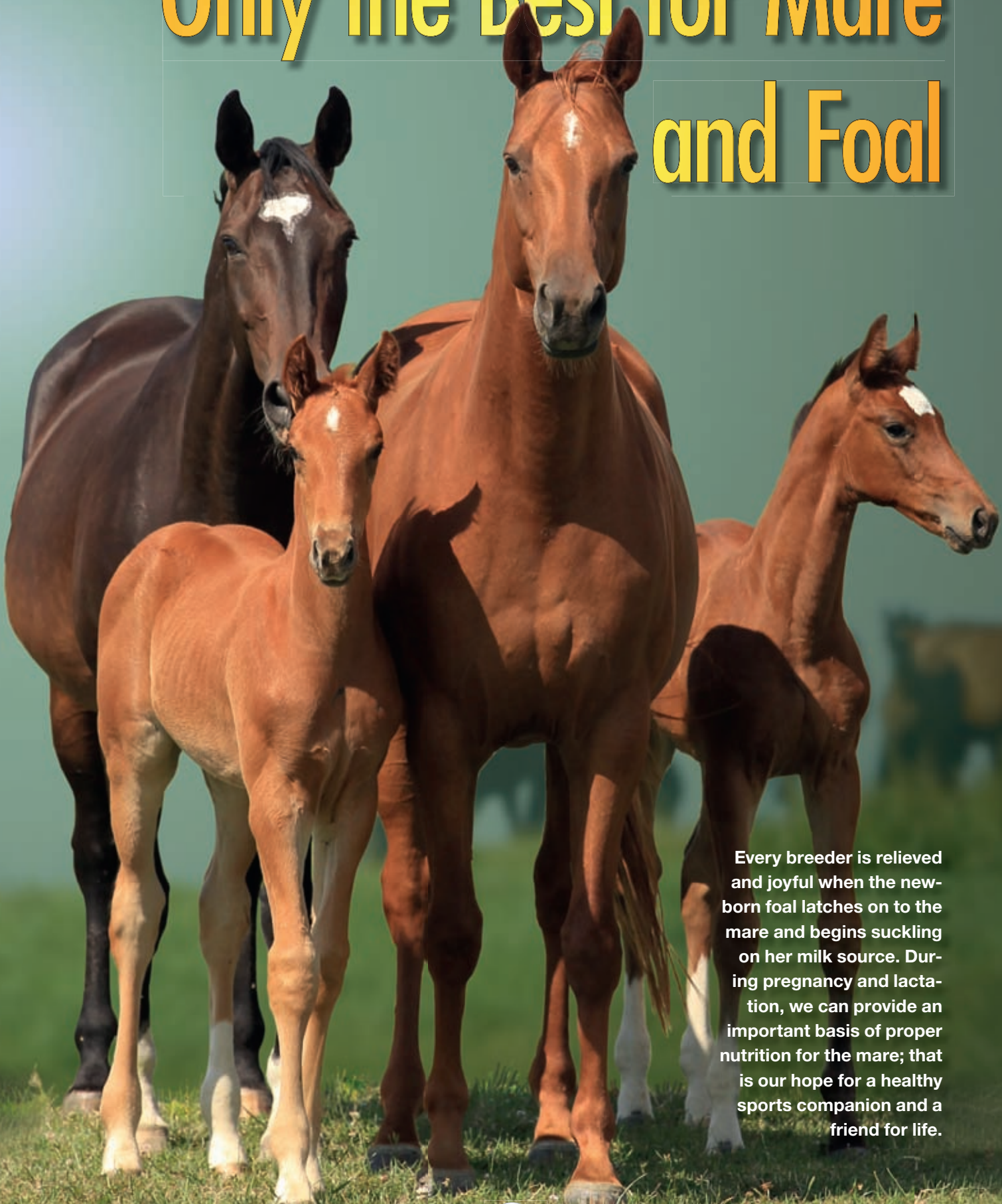
##### **High performance during lactation**

Studies have shown that a mare produces the highest amount of milk in the third month of lactation. The energy required to produce milk in a warmblood mare is approx: 140 MJ, the same as that required for high performance horses. It is inconceivable that this demand could be met from grass alone. Furthermore, a combination of grass and oats alone does not meet the mineral and trace element requirements of a lactating mare. Feeding St. Hippolyt's Equilac during this time promotes a healthy foal development and, in addition, provides all the essential nutrients for the mare's well-being.

#### **Fohlengold - the perfect companion**

We put a lot of expectations in these little animals and must therefore do justice and meet the special nutritional needs of foals. In the first month of life, a foal can already tolerate concentrated feed. Supplement feeding doesn't only support the musculoskeletal system, but it also has a positive impact on the sensitive digestive tract of the foal and its immune system. Fohlengold offers more than oats - in addition to better skin and hair structure, Fohlengold strengthens the immune system, thus preventing inflammation and eczema. Fohlengold has also proven to prevent growth spurts during critical periods of weaning.

# Only the Best for Mare and Foal



Every breeder is relieved and joyful when the newborn foal latches on to the mare and begins suckling on her milk source. During pregnancy and lactation, we can provide an important basis of proper nutrition for the mare; that is our hope for a healthy sports companion and a friend for life.

# Equilac

A feed especially designed for broodmares



Pellets, paper sack 25 kg  
Müsli, paper sack 20 kg

Equilac is an approved broodmare feed, developed on the basis of long-years experiences in thoroughbred breeding.

- well-balanced protein/energy-ratio
- including herbs, ground algae, oils and oleaginous fruits
- rich in essential amino acids
- perfectly balanced content in trace elements

## Boosting fertility

Approx. three months before the mating, the mare's diet should contain high-quality vital nutrients, however, the energy supply should be moderate. Supplements with "St. Hippolyt's  $\beta$ -Carotene and Garlic" and trace elements (for example MicroVital) enhance her potential to conceive. It is recommended to then continue feeding energy-adapted rations with a well-balanced content in high-quality micronutrients.

## Vital nutrients for two

St. Hippolyt's Equilac contains particularly high-quality protein. Besides a well-balanced protein-energy-ratio, all minerals, trace elements and vitamins are included in well-adapted quantities to meet the nutritional requirements and to promote the healthy development of the growing foal. Brewer's yeast, sprouts, a range of ocean-derived components and other substances rich in vital nutrients sustainably complete the formula.

## FEEDING RECOMMENDATION EQUILAC PELLETS EQUILAC MÜSLI

**From the 8th month of pregnancy,** gradually start to replace the daily feed consisting of concentrated feed and/or grass with Equilac.

**From the 9th to 11th month of pregnancy approx. 400 – 500 g Equilac per 100 kg body weight per day. The total quantity per day should be offered in different rations. For easy resp. hard keepers, the ration should be adjusted by 10 – 15% upwards or downwards. Oats can be fed in addition. Equilac is recommended to be fed on its own to special breeds, ponies and easy keepers.**

### From the 1st to 3rd month of lactation:

Gradually increase Equilac to **max. 600 g per 100 kg** body weight, because the third month of lactation will be the peak of milk production.

### From the 5th month of lactation:

Gradually reduce Equilac to finally continue with the usual concentrated feed on its own. Finish to feed Equilac after the foal has been weaned.

## COMPOSITION EQUILAC PELLETS

Barley flakes, corn germ, alfalfa fibre, oat bran, barley germ, oil seed mixture (linseed, sunflower, fennel seed, black cumin seed) 6.6%, wheat bran, sugar beet fibres, dried apple, corn flakes, herbs (peppermint, coriander, hibiscus, aniseed) 2.8%, oat flakes 2%, apple syrup, warm air-dried chopped grass, algae powder, pea protein, salt, calcium carbonate (maritime and mineral), oil mixture (linseed-/sunflower-/corn germ-/black cumin oil) 0.8%, brewer's yeast, carrots, dicalcium phosphate, magnesium acetate

## COMPOSITION EQUILAC MÜSLI

Barley flakes, corn flakes, alfalfa fibre, sugar beet molasses, dried apple, oil seed mixture (linseed, sunflower, black cumin seed, fennel seed) 4.4%, barley germ, oat bran, whole grain oats, herbs (peppermint, anise, fennel) 2.5%, warm air-dried chopped grass, wheat bran, brewer's yeast, corn germ, oil mixture (corn germ-/linseed-/sunflower oil) 2%, calcium carbonate (maritime and mineral), salt, pea protein, sugar beet fibres, algae powder, wheat germ, carrots, Himalayan salt

INGREDIENTS	PELLETS	MÜSLI
Raw protein	12.0	10.5 %
Raw fibre	13.0	8.4 %
Raw fat	6.0	5.5 %
Raw ash	9.6	9.0 %
digestible raw protein	94	92 g/kg
digestible energy	12.5	12.5 MJ/kg
Starch	21.9	27.6 %
Sugar	3.8	7.2 %
Calcium	1.6	1.2 %
Phosphorus	0.5	0.4 %
Magnesium	0.4	0.4 %
Sodium	0.5	0.5 %
Lysine	0.6	0.5 %
Methionine	0.3	0.3 %

NUTRITIONAL ADDITIVES	per kg	
Vitamin A	22,000	20,000 IE
Vitamin D3	2,500	2,200 IE
Vitamin E	320	350 mg
Vitamin B1	13	13 mg
Vitamin B2	13	13 mg
Vitamin B6	7	8 mg
Vitamin B12	50	45 mcg
Biotin	270	300 mcg
Nicotinic acid	50	60 mg
Folic acid	7	6 mg
Pantothenic acid	26	26 mg
Choline chloride	230	500 mg

TRACE ELEMENTS	per kg	
Iron	150	180 mg
Zinc	200	200 mg
Manganese	130	170 mg
Copper	50	45 mg
Iodine	2.0	1.8 mg
Cobalt	5.0	3.0 mg
Selenium	0.6	0.6 mg

1 liter = approx. 750 g Equilac Pellets

1 liter = approx. 600 g broodmare muesli

# Shaping the Future

At first wide legged and unbalanced, then charging past its dam in the canter with huge strides only to come to rest in the sun for a blissful nap. Young foals delight our heart. We can hardly avert our eyes from these gorgeous little creatures on which we have pinned so many hopes. And many a foal already practices its skills very early to unfold all its potential.

# Fohlengold

## Foal feed for special requirements



Classic, paper sack 25 kg  
Müsli, paper sack 20 kg

A high-quality foal feed, specially formulated to promote a balanced development, a proper digestion and a balanced growth, particularly during the first months of life. Rich in minerals and trace elements for a perfect bone and cartilage development.

- stabilizes digestion
- low in starch
- rich in micronutrients
- contains herbs, ground algae, oils and oleaginous fruits

St. Hippolyt's Fohlengold contains a range of highly biologically valuable vegetable proteins, supplemented with all of the most important amino acids to support the proper growth and development. Fohlengold has furthermore been formulated as a low-starch feed and has been specially fortified with a range of healthy oleaginous fruit, fibres and nutrients that both energize and promote the digestive system.

Fohlengold provides a range of high-quality basic nutrients such as corn germ, brewer's yeast, herbs and many other highly nutritious components that contain essential nutrients. The minerals used in Fohlengold are primarily organic

and ocean-derived from ground algae. They are well-balanced in content and support a balanced growth and development. Yeast, malt, linseed and special herbs promote the enzymatic digestion which starts to develop during the first weeks of life. It also fosters the development of a highly-resistant colon flora.

### Strength for life

Foals that are fed Fohlengold will more than well be prepared for the stressful process of weaning. Besides, Fohlengold contributes to preventing early signs of physical wear and tear in later life and completely covers the particular nutritional requirements of foals, thus providing an excellent basis for a well-balanced and healthy development.

### FEEDING RECOMMENDATION

#### Fohlengold Classic / Müsli

We recommend to feed **Fohlengold free choice from the third week of life until the third month** as supplement to the usual basic feed including mare's milk, roughage and/or grass. Foals with a final weight of approx. 600 kg are fed **at least 1 kg Fohlengold as of the 4th month.**

The total quantity should be offered in several rations. **1.5 kg Fohlengold should be fed as of the 5th month and 2 kg as of the 6th month. The rations have to be adopted by 10 – 15% plus or minus for hard or easy keeping horses. Oats can be fed in addition. Fohlengold should be adapted to the horse's weight for special breeds, ponies and easy keeping horses, and we recommend Fohlengold to be fed on its own. The dosage should vary – depending on the pasture quality – from the 12th to the 24th month.** It is recommended to continuously **reduce feeding Fohlengold as of the 24th month** and to substitute it with for example Hesta Mix or Struktur-Energetikum and oats.

### COMPOSITION CLASSIC

Barley flakes, corn germ, alfalfa fibre, wheat bran, malt-yeast-flavour, calcium carbonate (maritime and mineral), sugar beet fibre, oil seed mixture (linseed/sunflower/black cumin seed) 3.2%, pea protein, herbs (peppermint, coriander) 2.9%, apple syrup, brewer's yeast, barley germ, salt, linseed-/sunflower oil cold pressed 1.2%, algae powder, wheat germ, magnesium acetate, dried apple 0.2%

### COMPOSITION MÜSLI

Corn germ 20%, barley flakes, sugar beet molasses, brewer's yeast 4.5%, corn flakes, calcium carbonate (maritime and mineral), alfalfa fibre, apple syrup, sugar beet fibre, herbs (peppermint, coriander, sage, oregano, marjoram) 3.4%, linseed-/sunflower oil mixture cold pressed 2.6%, oil seed mixture (linseed, sunflower, fennel seed, black cumin seed) 2.6%, dried apple, warm air-dried chopped grass, malt-yeast-flavour, wheat bran, pea protein, salt, grape skins, barley germ, algae powder, garlic, wheat germ

INGREDIENTS	CLASSIC	MÜSLI
Raw protein	14.0	13.0 %
Raw fibre	8.0	7.5 %
Raw fat	8.0	9.0 %
Raw ash	11	11.0 %
digestible raw protein	102	101 g/kg
digestible energy	12	12 MJ/kg
Starch	23.3	23.3 %
Sugar	4.0	7.0 %
Calcium	2.0	1.6 %
Phosphorus	0.6	0.5 %
Magnesium	0.5	0.4 %
Sodium	0.6	0.5 %
Lysine	0.6	0.5 %
Methionine	0.4	0.2 %
<b>NUTRITIONAL ADDITIVES per kg</b>		
Vitamin A	25,000	22,000 IE
Vitamin D3	2,900	2,500 IE
Vitamin E	600	300 mg
Vitamin B1	15	15 mg
Vitamin B2	15	15 mg
Vitamin B6	8	7 mg
Vitamin B12	60	55 mcg
Biotin	300	330 mcg
Nicotinic acid	60	60 mg
Folic acid	7	4 mg
Pantothenic acid	30	30 mg
Choline chloride	200	500 mg
<b>TRACE ELEMENTS per kg</b>		
Iron	200	200 mg
Zinc	260	220 mg
Manganese	150	120 mg
Copper	70	50 mg
Iodine	3.0	2.4 mg
Cobalt	3.0	5.5 mg
Selenium	0.7	0.7 mg

1 liter = approx. 800 g Fohlengold Classic  
1 liter = approx. 700 g Fohlengold Müsli

# Bonus!

Mineral feed supplements are designed to balance a horse's daily feed. Choosing the appropriate mineral feed depends on performance requirements, type and feeding of the horse. A broodmare has different nutritional requirements when it comes to mineral feed than small horses.

St. Hippolyt's mineral supplement feeds contain a diverse range of ingredients that are naturally rich in vital nutrients, including ocean-derived minerals and yeast, cereal germs and herbs. Carrots and fruit components contribute to the nutritional value and add excellent flavour. The trace elements are predominantly organically bound and therefore highly bioavailable, thus ensuring a reliable and balanced supply.

## Gemüse-Kräuter-Mineralien

Minerals for breeding and raising horses



Bucket 10 kg, paper sack 25 kg

The perfect feed, specially formulated for heavily pregnant or lactating mares and for raising young horses. To balance a diet rich in grain.

- high contents in calcium and ocean-derived nutrient carriers
- tasty because of the diverse range of highly nutritious ingredients
- great variety of different essential nutrients
- pelleted

St. Hippolyt's Vegetable Herb Mineral Mix is based on natural algal limestone. The highly bioavailable form of calcium is absolutely necessary for breeding animals or horses being fed larger amounts of grain to balance the calcium-phosphorus ratio. All the trace elements and vitamins contained in St. Hippolyt's Vegetable Herb Mineral Mix are provided in a biologically effective dose and carefully balanced rations.

Dried vegetables and fruits, herbs and oleaginous fruits enrich this mineral feed with a vast range of natural and highly-digestible nutrients, they contribute to the excellent flavour and improve digestion as well as the absorption of the minerals and other active ingredients into the blood.

# SemperMin

An extremely palatable mineral muesli mix



Bucket 7.5 kg, paper sack 15 kg

**SemperMin is a supplement specifically formulated for horses being fed low or moderate quantities of concentrated feed to compensate for a lack of nutrients.**

- great taste - readily accepted
- unique muesli-structure
- moderate content in calcium
- highly available trace elements

SemperMin is mixed and fed with the daily concentrated feed ration or as supplement if the horse is fed hay only.

SemperMin contains a high proportion of ocean-derived minerals, vitamins, herbs and trace elements as complex organic compounds. If required, the daily quantity can temporarily be doubled.

For horses with diet-related deficiencies such as skin and coat problems, immune disorders or eczema, we recommend to feed the trace element booster MicroVital.

# SemperCube

The handy cube



Bucket 3 kg and 10 kg

SemperCube is a handy mineral cube, formulated especially for the mineral requirements of pasture horses or to balance the mineral requirements of horses being fed low quantities of concentrated feed or hay only.

- easy to feed to pasture horses
- to be fed like treats
- particularly rich in trace elements
- specific supply of nutrients

SemperCube provides an appropriate, well-balanced selection of the most essential minerals and vitamins, sourced from a range of tasty ingredients that are rich in vital nutrients such as grain germs, oleaginous fruits, carrots and fruit components.

Compared to mineral salt blocks, cubes have more advantages as the supply of nutrients can be easily and exactly determined and the nutrients' availability is significantly higher.

## COMPOSITION

### GEMÜSE-KRÄUTER-MINERALIEN

Calcium carbonate (maritime and mineral), dicalcium phosphate mineral, algae powder, salt, carrots, barley flakes, corn germ, dried apple, magnesium fumarate, oil mixture (linseed, sunflower) cold pressed 3.8%, herbs (peppermint, coriander) 3%, oil seed mixture (linseed/sunflower/fennel/black cumin) finely ground 2.8%, brewer's yeast, apple syrup, beetroot, pea protein, oat flakes, honey

### COMPOSITION SEMPERMIN

Dried apple, calcium carbonate (maritime and mineral), corn germ, wheat bran, sugar beet molasses, dicalcium phosphate, apple syrup, salt, warm air-dried chopped grass, oil mixture (linseed/ sunflower oil) cold pressed 3.5%, barley flakes, algae powder, herbs (parsley, peppermint, coriander, fennel, holy thistle, marjoram) 3.5%, carrots, oil seed mixture (linseed, sunflower) 2.2%, magnesium acetate, dried grapes, wheat germ, garlic, brewer's yeast, pea protein

### COMPOSITION SEMPERCUBE

Barley flakes 35%, calcium carbonate (maritime and mineral), algae powder, apple syrup, corn germ, salt, warm air-dried chopped grass, dried apple, oil seed mixture (linseed, sunflower, fennel) finely ground 3.8%, linseed/sunflower oil cold pressed 3.3%, parsley, magnesium acetate, dried grapes, herbs (coriander, curcuma, hawthorn) 1%, pea protein, carrots, brewer's yeast, garlic, banana flour

	GKM	S.MIN	S.CUBE
<b>INGREDIENTS</b>			
Raw protein	4.7	7.5	8.0 %
Raw fibre	4.0	8.0	6.2 %
Raw fat	5.0	8.0	6.5 %
Raw ash	55.0	32.0	37.0 %
Calcium	13.5	6.7	8.5 %
Phosphorus	2.7	1.7	2.0 %
Magnesium	2.4	1.2	1.6 %
Sodium	3.6	2.0	2.0 %

	per kg		
<b>NUTRITIONAL ADDITIVES</b>			
Vitamin A	270,000	90,000	130,000 IE
Vitamin D3	30,000	10,000	14,500 IE
Vitamin E	5,000	2,000	2,100 mg
Vitamin B1	250	100	80 mg
Vitamin B2	320	150	80 mg
Vitamin B6	180	80	45 mg
Vitamin B12	550	200	300 mcg
Biotin	5,000	2,000	1,500 mcg
Nicotinic acid	500	210	300 mg
Folic acid	60	30	40 mg
Pantothenic acid	250	100	150 mg
Choline chloride	4,000	2,000	5,000 mg

	per kg		
<b>TRACE ELEMENTS</b>			
Iron	1,500	600	1,000 mg
Zinc	2,500	1,000	3,300 mg
Manganese	1,100	500	2,700 mg
Copper	700	180	650 mg
Iodine	30	10	18 mg
Cobalt	26	8	10 mg
Selenium	7.5	3	5 mg

### FEEDING RECOMMENDATION GEMÜSE-KRÄUTER-MINERALIEN

As supplementary feed to the usual roughage and/or grass and oats or feed for breeding stock, we recommend **approx. 20-25 g per 100 kg** body weight and day.

### FEEDING RECOMMENDATION SEMPERMIN

As supplementary feed to the usual roughage and/or grass, we recommend **approx. 25-40 g per 100 kg** body weight and day.

### FEEDING RECOMMENDATION SEMPERCUBE

As supplementary feed to the usual roughage and/or grass, we recommend **approx. 15-25 g per 100 kg** body weight and day.







# Let food be thy medicine and medicine be thy food

Hippocrates of Kos, around 460 bis ~370 BC

**The physician Hippocrates knew the essential effect of diet on the well-being of an organism. At St. Hippolyt, we live by this principle everyday with our philosophy, "Feeding like Nature". Throughout history, we have used the power of natural foods to maintain health in humans and animals. This is the challenge we have set ourselves in our HorseCare-series. "Care": welfare, protection or treatment and this together with Hippocrates' principle is exactly what St. Hippolyt products are designed for.**

Using our scientifically approved nutritional supplements and diet food products will help make discomfort a foreign word. HorseCare-products assist in supporting your horse's metabolism; and a well-balanced and healthy diet is the best possible way to achieve this goal.

#### **Feeding is one approach**

Nutritional problems in horses can be traced directly to poor feeding. Therefore, the right product selection is decisive to resolve nutritional problems quickly and in a natural way. Our HorseCare-series puts an end to diet-related health disorders such as: muscle tension, lameness, recurring digestive or respiratory problems, skin diseases as well as mental disorders. An increased need for nutrients in certain situations, e.g. stress or shedding or during con-

valescence, should be covered by HorseCare-products in order to prevent or to resolve these health issues. Likewise, genetic susceptibility, hormonal disorders or during competitions may require an increased energy demand that has to be compensated.

#### **Natural and effective**

In the production of our HorseCare-products, we put special emphasis on the biological originality and effectiveness of the ingredients and their synergy-promoting function. Our recipes are not only characterised by the amount of additives, but also by the effectiveness of the raw materials. The natural resources of our HorseCare-product range include health-promoting and metabolic-activating ingredients. Using the power and mysteries of nature to create feeding along the lines of nature itself - St Hippolyt incorporates its principle "Feeding like Nature" into its daily work.

The natural and gentle processing of raw materials allows the integration of these resources in largely unchanged form, which will ensure that valuable nutrients reach the cells.

The make-up and integration of essential natural processes in our recipes usually ensures the desired diet success after a feeding period of a few weeks to a few months.

#### **The perfect supplement**

HorseCare's product range includes a diverse range of carefully formulated supplements. Please feel free to contact St. Hippolyt for help and advice if you need any information with choosing the right feed or a combination of St. Hippolyt's HorseCare products for your horse.

The advice team in Schlitz and the scientific product advice team at the Ebert Mill in Dielheim will be happy to answer your questions any time. Contact details are available on the back of the catalogue.



# Laminitis — Regeneration and Prophylaxis

Horse lovers often underestimate the amount of calories in basic feed. A high intake of calories, through roughage and fresh succulent grass, can have fatal consequences for horses that were originally bred to survive meager living conditions. It often ends in disaster, laminitis. Abruptly increasing blood sugar and insulin levels by sugar-rich grass or “strength” bombs such as cereals and cereal flakes are regarded, at the moment, as the number one cause of laminitis.

# Glucogard

To counteract the risk of laminitis, caused by EMS



Bucket 3 kg and 10 kg

**Glucogard has been formulated to balance a deficiency in nutrients that frequently leads to an insulin resistance, to circulatory disorders and soft tissue injuries in the hoof. It is recommended to supplement the daily feed ration of horses susceptible to laminitis with Glucogard.**

- supplementing an increased need for vital nutrients after laminitis
- in case of acute risk of laminitis
- matches the mineral feed requirements in case of a pure roughage diet
- perfect addition to Equigard

## Reducing the risk

Glucogard has been specifically designed to address the needs of horses suffering from the Equine Metabolic Syndrome or horses susceptible to laminitis. In this situation, it is important to increase the tissue's responsiveness to insulin on the basis of a diet low in grain. According to the latest science findings, this considerably reduces the risk of laminitis.

The functional nutrients in Glucogard can provide valuable assistance in this respect. The sugar and insulin metabolism depends on B-vitamins and minerals such as magnesium, zinc, manganese and trivalent chromium. Cell-protective vital nutrients such as vitamin E and selenium contribute to the

insulin molecule's integrity and protect the hoof corium against inflammation, additionally assisted by nutrients derived from brewer's yeast and special fodder herbs which support the insulin with the blood sugar control. Glucogard contains all mentioned active agents in biologically active form, including chromium as component of the brewer's yeast and supplemented herbs.

## Protecting the hoof complex

Circulatory disorders in the hoof complex are known to encourage the development of laminitis, accompanied by decomposition of lamellar horn and corium structures and powered by inflammatory activities. Thus functional nutrients have to fulfil an important task as they have to ensure a sufficient blood circulation and to control the inflammatory process. Deficiencies in supplementing these active agents in sufficient quantities with the food can lead to a weakened immune system and promote the development of laminitis.

Glucogard has been specifically formulated to provide the adequate natural antioxidants and plant-derived protective nutrients to counteract these deficiencies. This is how Glucogard contributes to overall hoof quality and health.

## COMPOSITION

Brewer's yeast 40%, herbs 28% (holy thistle, blueberry foliage, shepherd's purse, buckwheat herb, marjoram, fenugreek, anise, fennel), linseed/sunflower oil mixture cold pressed 6%, malt-yeast-flavour, ginger, carnitine, cinnamon, salt, garlic, magnesium acetate, magnesium fumarate, calcium carbonate (maritime and mineral), artichoke, algae powder, honey

## INGREDIENTS

Raw protein	18.0 %
Raw fibre	7.5 %
Raw fat	7.5 %
Raw ash	13.0 %

Calcium	1.0 %
Phosphorus	0.8 %
Magnesium	1.0 %
Sodium	0.9 %

## NUTRITIONAL ADDITIVES per kg

Vitamin A	50,000 IE
Vitamin D3	5,500 IE
Vitamin E	5,500 mg
Vitamin B1	100 mg
Vitamin B2	150 mg
Vitamin B6	100 mg
Vitamin B12	150 mcg
Biotin	10,000 mcg
Nicotinic acid	150 mg
Folic acid	15 mg
Pantothenic acid	140 mg
Choline chloride	2,000 mg

## TRACE ELEMENTS per kg

Iron	150 mg
Zinc	2,600 mg
Manganese	3,500 mg
Copper	850 mg
Iodine	1 mg
Cobalt	20 mg
Selenium	4 mg

## FEEDING RECOMMENDATION

(for example in combination with Equigard or pure roughage rations)

### NUTRITIONAL SUPPORT TO TREAT

#### ACUTE LAMINITIS:

50g per 100 kg body weight and day:

If required, suspend in water and give with an oral applicator.


After laminitis, to start with:

30g per 100 kg body weight and day, then

18-20g per 100kg body weight and day for a couple of months.

To support metabolism and hoofs of horses susceptible to laminitis, in seasons or weather and pasture conditions known to contribute to the development of laminitis:

18-20g per 100 kg body weight and day, for example for 2-8 weeks.



A few years ago, a lively, powerful, happy horse - and today lethargic and a shadow of itself? Scientific research has gradually become more concerned with the fate of horses suffering from the Equine Cushing's Syndrome. Apart from the medicinal options, today we now know more about nutrient deficiencies that may contribute to the Equine Cushing's Syndrome. Cortigard has been designed to effectively balance deficiencies with natural nutrients.

# Enhanced Quality of Life for Horses with Cushing's

# Cortigard

A chance for Cushing horses



Bucket 3.75 kg

Cortigard compensates for essential mineral deficiencies that occur with the Equine Cushing' Syndrome. It has been designed to support the body's natural free radical defenses with highly efficient natural antioxidants – thus protecting the endangered glandular tissue of the diencephalon.

- efficiently balances nutrients in the Equine Cushing's Syndrome
- for horses susceptible to laminitis due to ECS
- recommended in combination with Equigard

## Equine Cushing's Syndrome – a nutrition problem?

About 15% of older horses develop Equine Cushing's Syndrome (ECS), and about half of all horses suffering from ECS are insulin-resistant and have developed laminitis. Therefore, an important nutritional goal is to counter insulin resistance as a risk factor for laminitis. The successful nutritional formula of Glucogard (page 50) was adopted for Cortigard for this purpose.

## Vital nutrients against tissue destruction

A major reason for age-related problems is now seen in cell damage caused by free oxygen radicals. In the Equine Cushing's Syndrome, these substance attacks take place particularly in the hormone regulating glandular tissue of the hypothalamus and the pituitary gland. Due to tissues damage to these glands, among other things, the hormonal balance be-

tween dopamine, adrenocorticotrophic hormone (ACTH), cortisol and insulin are out of control. This leads to the development of Cushing symptoms. The heart of this problem lies at the body's own free radical defense system, consisting of enzymes and antioxidants. Also a lack of antioxidant nutrients may play a role. Here Cortigard jumps into the breach with typical food antioxidant. The aim is to contribute to stopping the progressive degeneration of glandular tissue and to encourage tissue regeneration.

## Why use complex protective substances?

Destructive radical substances and affected tissue are completely different. For that reason, a reliable protection is only possible with diverse and efficient antioxidants. Not only antioxidant nutrients like natural vitamin E, vitamin C and highly bio-available, organically bound selenium are used for Cortigard. In the main the focus is a complex mix of mineral sources such as monk's pepper, holy thistle, buckwheat, gooseberry, ginger and yeast extract. The cell protective substances of these plants are of a particular and special diversity.

## Considering accompanying problems

The typical accompanying disorders of ECS include immunodeficiency, chronic fatigue, shedding, hoof and reproductive problems. Cortigard therefore provides a variety of natural ingredients that target problem-specific nutrient deficiencies. These include an extensive complex of vitamins and organically bound trace elements, natural compounds such as brewer's yeast, ginger, garlic, fenugreek, linseed, seaweed and red clover. Marjoram, anise and fennel are added for appetite stimulation.

## The overall benefits of Cortigard

Cortigard offers a nature-oriented concentrate of nutrients, particularly addressing the additional nutritional requirements of horses suffering from the Equine Cushing's Syndrome. Thus Cortigard can contribute to an improved quality of life of affected horses.

## COMPOSITION

Brewer's yeast, herb mixture (coriander, blueberry leaves, red clover, milk thistle, monk's pepper, buckwheat cabbage, mallow, peppermint, anise, fennel), malt-yeast-flavour, oil mixture (linseed, sunflower, black cumin), ginger, carnitine, salt, garlic, magnesium acetate, gooseberries, algae powder, vinegar, coenzyme Q 10

## INGREDIENTS

Raw protein	12.0 %
Raw fibre	5.0 %
Raw fat	5.6 %
Raw ash	8.5 %
Calcium	0.7 %
Phosphorus	0.55 %
Magnesium	0.7 %
Sodium	0.65 %

## NUTRITIONAL ADDITIVES per kg

Vitamin A	35,000 IE
Vitamin D3	3,800 IE
Vitamin E	5,500 mg
Vitamin C	6,200 mg
Vitamin B1	100 mg
Vitamin B2	125 mg
Vitamin B6	70 mg
Vitamin B12	90 mcg
Biotin	7,600 mcg
Nicotinic acid	450 mg
Folic acid	15 mg
Pantothenic acid	100 mg
Choline chloride	2,000 mg

## TRACE ELEMENTS per kg

Iron	230 mg
Zinc	1,800 mg
Manganese	2,250 mg
Copper	550 mg
Cobalt	10 mg
Selenium	3 mg

## ADDITIONAL ADDITIVES:

Cinnamon  
Diatomaceous earth

## FEEDING RECOMMENDATION

body weight:	daily ration:
100kg	approx. 40 g
200kg	approx. 65 g
300kg	approx. 85 g
400kg	approx. 105 g
500kg	approx. 125 g
600kg	approx. 145 g

# Happiness without Sugar

A juicy apple, a crisp carrot, fresh grass, crusty bread or a delicious fragrant grain cereal muesli after work - at first glance it seems to be quite a healthy reward for the horse. But many of these “treats” contain a considerable amount of sugar and starch. An excess of sugar and starch raises blood sugar levels and increases the risk of laminitis. But there are ways to reward a horse, without risk, and without the horse lover developing a guilty conscience.

# Glyx-Mash

Mash for special cases



Bucket 5 kg

Thanks to Glyx-Mash, horses allergic to cereals can now enjoy feeding on Mash. Because Mash can be part of the feed for horses suffering from colic or recovering from digestive disorders.

- gluten- and molasses-free
- low glycemic index
- prebiotic and purifying
- versatile, everyday use

Glyx-Mash is reduced in sugar and starch, and is free from grain, molasses and gluten. Therefore, it is particularly suitable for horses that need to be fed carbohydrate-reduced diets and particularly gentle on the stomach. The rich composition of prebiotic ingredients contributes to a harmonization of bowel function. And in addition, selected herbs aid the digestion processes.

### Protection and care on the inside

The mucilage substance extracted from cracked linseed protects mucous membranes throughout the digestive tract. The excellent swelling capacity of the Glyx-Mash-ingredients promotes pressure on the intestinal walls and supports excretion of foreign substances and pollutants. Stimulation of intestinal movements promotes easier emptying of bowel.

Can be used for general digestive support, days spent in the stall, during shedding and intense performance and during sickness.

# Glyx-Lobs

Everyone's happiness



Bag 1 kg

Every horse can enjoy this tasty treat. Regardless if your animal is suffering from obesity, dieting or has metabolic problems - Glyx-Lobs makes all horses happy.

- reduced in starch and sugar
- suitable for allergy sufferers
- tasty and very healthy
- in handy cube-form

Glyx Lobs treats are a healthy alternative to conventional treats; they are reduced in carbohydrate and energy and therefore useful for all horses who should not receive additional hidden calories.

### A tribute to problem cases

Anyone who has a horse with problems like obesity, Equine Metabolic Syndrome, Cushing's Syndrome, polysaccharide storage myopathy (PSSM) or laminitis, should be afraid to reward their horse with a treat. Unfortunately, conventional treats often have high levels of sugar or carbohydrates, to make them palatable in the first place. However, these types of reward are not suitable for horses with such problems.

Glyx-Lobs are designed so that you can reward your horse safely, with a tasty and healthy treat.

### COMPOSITION GLYX-MASH

Alfalfa fibre, Pre Alpin grass fibre, sugar beet fibre, cracked linseed 5.5%, corn germ, rice bran 4.6%, grape skin, isomaltose prebiotic, herbs (fennel, coriander, holy thistle) 4%, barley grass, brewer's yeast, grape seed extract, calcium carbonate (maritime and mineral), apple vinegar

### COMPOSITION GLYX-LOBS

Carrots, sugar beet fibres, linseed, barley grass, wheat grass, dried apple, oat grass, rice bran, holy thistle, parsley, herbs (nettle, blackberry leaves, chamomile, melissa, sage, yarrow), brewer's yeast, yeast-flavour fermented, calcium carbonate (maritime and mineral), beetroot, wheat bran, linseed oil cold-pressed, isomaltose (β-Glucane)

INGREDIENTS	GLYX-MASH	GLYX-LOBS
Raw protein	10.9 %	10.0 %
Raw fibre	17.0 %	14.0 %
Raw fat	6.0 %	7.5 %
Raw ash	9.2 %	10.0 %
digestible raw protein	80 g/kg	
digestible energy	9.0 MJ/kg	
Calcium	1.2 %	2.2 %
Phosphorus	0.5 %	0.6 %
Magnesium	0.5 %	
Sodium	0.4 %	0.1 %
Starch	4.1 %	
Sugar	5.0 %	
<b>NUTRITIONAL ADDITIVES</b> per kg		
Vitamin A	7,000 IE	25,000 IE
Vitamin D3	700 IE	2,700 IE
Vitamin E	55 mg	500 mg
Vitamin B1	10 mg	16 mg
Vitamin B2	8 mg	16 mg
Vitamin B6	8 mg	10 mg
Vitamin B12	18 mcg	60 mcg
Biotin	200 mcg	350 mcg
Nicotinic acid	80 mg	
Folic acid	2 mg	
Pantothenic acid	20 mg	
Choline chloride	800 mg	
<b>TRACE ELEMENTS</b> per kg		
Iron	200 mg	300 mg
Zinc	100 mg	180 mg
Manganese	75 mg	130 mg
Copper	16 mg	30 mg
Iodine	0.7 mg	
Cobalt		1.0 mg
Selenium	0.7 mg	0.5 mg

### FEEDING RECOMMENDATION

#### GLYX-MASH

Mix approx. 70-250 g Glyx-Mash per 100 kg body weight with the 1.5 times the amount of warm or hot water, let it stand for approx. 15 min. and feed it warm. Glyx-Mash can also be prepared with cold water in the summer months with the soaking time being increased to 30 minutes. In general, feed 1 - 3 times a week. If necessary, it can be fed every day.


### FEEDING RECOMMENDATION

#### GLYX-LOBS

Some cubes every day as reward

1 liter = approx. 430 g Glyx Mash

# Let's move



If our horse is lame, if an obviously devastating diagnosis seems to threaten the common future with our horse, turning to nature for help can sometimes provide a more than valuable and adequate solution. In recent years, there has been mounting evidence for the crucial role of diet in the development of joint and tendon diseases, as well as for general mobility problems. It has been verified by studies that an adequate supply in trace elements and minerals, high-quality fatty acids and antioxidant vitamins as well as a range of metabolism-activating herbs are highly beneficial for the horse's general mobility. New Zealand Green Lipped Mussels in particular have been found to contain a range of highly valuable properties in this regard, and their positive effects have already formed the subject of countless scientific studies with humans and animals.



# Movicur

High-quality supplement  
with mussel extract



Bucket 10 kg

**Contains the quality-tested and certified New Zealand Green Lipped Mussel extract.**

- rich in specially selected active herbs
- biotechnologically refined brown millet as organic silicon compound
- rich in polyunsaturated fatty acids
- certified mussels quality

Movicur has proven itself over years of application, and its rich variety of nutrients makes it an ideal supplement for hard-working competition horses, for valuable youngsters and older approved horses.

#### Research subject green lipped mussel

The most crucial nutritional component of Movicur is the New Zealand Green Lipped Mussel extract. According to the marine scientist John Croft, its special nutritional impact is based on interacting biological functions.

However, according to his findings, only high-quality, premium mussel extracts have been found to unfold their entire beneficial effect as this mussel extract contains a special carbohydrate complex that is capable of controlling white blood cell proliferation the body produces in response to infection, but without suppressing the body's immune system. Mussel extract also contains special long-chain fatty acids and en-

zymes which promote the formation of infection-inhibiting prostaglandins that are known for smoothly counteracting infections.

John Croft also talks about a third mechanism of action. It is the nutritious supply with mucopolysaccharides, also known as glycosaminoglycan. The body's own chondrocytes are normally able to produce this type of protein-sugar compounds that contribute to the proper development of the cartilage tissue, giving the cartilage its pressure- and shock-absorbing and the synovial fluid its friction-reducing properties. Unfortunately, a horse's diet is frequently too unbalanced, and years of deficiency can severely disturb the glycosaminoglycan-synthesis.

#### Efficient nutrient supplementation

The combination of the New Zealand Green Lipped Mussel with herbs, fermented brown millet and horsetail as sources of natural silicon, collagen-forming proteins, ocean-derived ground algae extract that protects the tissue, and the special supply with trace elements make Movicur a unique and extremely efficient supplement, serving different purposes. It sustainably supports the body's ability to regenerate and build up connective tissue, tendons, ligaments and joint, and with additional ingredients such as vitamin E, omega-3 fatty acids derived from mussel extract and linseed as well as complex sugar derived from algae, Movicur contains a huge range of natural tissue-protective active ingredients.

A healthy and balanced diet can efficiently reduce any risk of loss of elasticity and progressive cartilage degeneration as well as the thinning of the synovial fluid which is also associated with a considerable loss of its lubricating properties.

#### COMPOSITION

Corn germ, barley flakes, malt, herbs (birch leaves, equisetum arvense, camomille, dandelion, goldenrod) 12 %, oil seed mixture (linseed, sunflower, fennel) 8 %, millet, carrots, oil mixture (linseed-/sunflower) cold pressed 4 %, algae powder, garlic, grape seed extract, brewer's yeast, apple syrup, shell flour (GLME) 3 %, sugar beet molasses, spirulina algae, calcium carbonate (maritime and mineral), Himalayan crystal salt, salt, sugar beet fibre, dried apple, magnesium acetate, wheat bran, fruit vinegar, pea protein

#### INGREDIENTS

Raw protein	15.0 %
Raw fibre	7.5 %
Raw fat	10.3 %
Raw ash	13.0 %

Calcium	1.8 %
Phosphorus	0.6 %
Magnesium	0.4 %
Sodium	0.6 %

Lysine	1.0 %
Methionine	2.0 %

#### NUTRITIONAL ADDITIVES per kg

Vitamin A	76,000 IE
Vitamin D3	8,500 IE
Vitamin E	5,500 mg
Vitamin C	2,400 mg
Vitamin B1	80 mg
Vitamin B2	120 mg
Vitamin B6	55 mg
Vitamin B12	190 mcg
Biotin	1,600 mcg
Nicotinic acid	200 mg
Folic acid	20 mg
Pantothenic acid	100 mg
Choline chloride	2,000 mg

#### TRACE ELEMENTS per kg

Iron	800 mg
Zinc	1,000 mg
Manganese	800 mg
Copper	300 mg
Iodine	10 mg
Cobalt	5 mg
Selenium	2.8 mg

#### FEEDING RECOMMENDATION

Approx. 40 g per 100 kg body weight and day.  
Approx. 20 g per 100 kg body weight are sufficient as prevention feed supplement.



# Ocean-Derived Power

Inflammations, tissue degeneration and a reduced regeneration capacity - many horses suffer from the succeeding consequences of an unbalanced diet. Laminitis, muscle tensions, cough, skin and metabolic problems can make a horse's life a misery. Nutritional deficiencies encourage the process of tissue inflammation and tissue degeneration with many a horse. The good news: a diet rich in herbs and vital nutrients will increase chances to maintain cells and organs healthy and will counteract an early degenerative process.

# Lamin Forte

Nutritious support to prevent inflammations and loss of vitality



Bucket 3 kg

**Nutritional building blocks to counteract diet-related inflammations of the extremities, the back, the respiratory and digestive system and of the reproductive organs as well as to prevent loss of vitality and reduced regeneration capacities.**

- glyconutrients derived from marine algae
- regulatory phytochemicals derived from nutrition herbs and linseed
- fruit components, spice plants, vitamins and trace elements guarantee an antioxidant cell protection

### Deficiency-related impact on the metabolic system

Years of deficiency of vital nutrients take a toll on the metabolism and on the immune system, resulting in reduced physical performances, reduced regeneration capacities and in a susceptibility to inflammations and infections of the extremities, skin and mucosa. Particularly hard-working competition horses and breeding stock, older horses and all horses exclusively fed with hay and oats are exposed to these risks. A lack in essential fatty acids, antioxidants, glycoproteins and trace minerals can delay tissue healing and thus lead to the development of chronic complaints.

### Ocean-derived power

The nutritional composition of brown algae is of particular interest to equine

nutrition as their walls contain special sugar compounds (glyconutrients) that are very similar to those found in the outer membrane layers of mammalian cells. Their richness in natural minerals, vitamins, amino acids, carbohydrates and phytochemicals make marine algae extremely effective in counteracting inflammatory metabolic and immune deficiencies.

### Micronutrients derived from fruit and herbs

Fruit and many spice herbs contain a different range of antioxidants, counteracting the aggressive influence of radicals on the metabolism in many ways. In combination with vitamin E derived from plant oil, omega-3 fatty acids and added trace elements, these micronutrients support the resistance of the tissue and the whole organism.

# DermiLac ProZem

Care for irritated and damaged skin

Nutritional deficiencies can lead to skin problems. The fine and stiff foam DermiLac Prozem efficiently promotes skin regeneration in wounds, grazes, pressure and abrasion, mite infestation and cracked heels.

- free from preservatives
- produced with biologically neutral propellant
- hermetically sealed, unlimited shelf life
- very economical due to bigger surface formation on the skin
- the only available re-useable system - the aluminum tins can be refilled

Naturally valuable ingredients such as specially derived birch extract are absorbed through the skin and directly penetrate the affected area. The natural triterpenes reduce the itching very quickly and thus effectively support skin regeneration.

### COMPOSITION

Barley flakes, carrots, algae powder, brewer's yeast 6%, chamomile, linseed, oil mixture (linseed/sunflower) 5%, curcuma, sugar beet molasses, holy thistle, grape seed extract, dried apple, calcium carbonate (maritime and mineral), salt, barley germ

### INGREDIENTS

Raw protein	14.0 %
Raw fibre	8.0 %
Raw fat	7.3 %
Raw ash	13.0 %
Calcium	1.0 %
Phosphorus	0.3 %
Sodium	0.3 %

### NUTRITIONAL SUPPLEMENTS per kg

Vitamin C	1,000 mg
Vitamin E	2,400 mg

### TRACE ELEMENTS per kg

Zinc	1,800 mg
Manganese	1,400 mg
Copper	300 mg
Selenium	6 mg

### FEEDING RECOMMENDATION

Approx. 15 - 20 g per 100 kg body weight and day.



### INGREDIENTS:

Aqua, brassica campestris seed oil, glycerin, butane, sucrose stearate, betulin, carbon dioxide propellant: butane, CO2 (non-polluting)

### APPLICATION:

Shake well before use. Hold tin upright or at a slight angle. Start with twice a day, followed by once daily. Apply on the affected parts of the skin, and gently massage in. For external application only.

# Perfect Hooves

They are the horse's foundation and carry it through out its life. Cracks, grooves, an insufficient consistency or disturbed growth reveal deficiencies in specific vital nutrients which urgently requires a balancing diet.

# Ungulat

## Holistic hoof care



Bucket 10 kg

**Ungulat has been formulated in accordance with the latest nutritional science findings and is continuously revised to ensure that its extremely diverse range of nutrient combinations provide a solid nutritional foundation for the development of healthy and strong hooves – even in difficult cases.**

- rich in keratin-forming amino acids
- rich in special brewer's yeast
- specially selected range of herbs
- rich in highly bio-available trace elements

### Improved hoof horn growth

The hoof horn primarily consists of the structural protein keratin that contains a highly specific type of amino acid. Ungulat compensates for any lack in the amino acids methionine, cysteine, lysine, proline and glycine, either directly

or through its natural sources of protein such as brewer's yeast, oil seeds, chlorella algae and herbs.

### Improving hoof structure

Minerals like zinc, manganese, copper, iron, organic sulphur compounds, silicon and calcium are important to the structural stability of the hoof horn. Ungulat contains a balanced ratio of these nutrients in predominantly natural, biologically available forms to ensure their absorbability.

The cold-pressed linseed oil in Ungulat is a source of unsaturated vegetable fatty acids which contribute considerably to the flexibility and elasticity of the hoof horn.

### Enhanced nutrient uptake

Ungulat is full of enzyme-rich sprouted grains, garlic, brewer's yeast, linseed, millet, chamomile, vitamin A and the trace element cobalt to promote and protect digestion and thus to enhance the body's own production of biotin.

### Transport of substances to the hoof

Only a hoof corium well-supplied with blood ensures that the hoof is perfectly provided with vital substances. Ungulat contains garlic, unsaturated fatty acids, grape seed extract and other vasoprotective substances. These nutrients assure a good blood flow and protect the fine vasculature and the corium.

### COMPOSITION

Brewer's yeast, alfalfa fibre, oil seed mixture (linseed, sunflower) 14%, herbs (horsetail, fenugreek seed, nettle, chamomile, curcuma, rosemary) 11%, oil mixture (linseed-/sunflower oil) cold pressed 6%, millet, malt-yeast-flavour, corn germ, algae powder, grape seed extract, Himalayan salt, garlic, barley flakes, carrots, Chlorella-algae, pea protein, magnesiumacetate, wheat bran, vinegar, apple syrup, salt

### INGREDIENTS

Raw protein	19.0 %
Raw fibre	10.0 %
Raw fat	10.3 %
Raw ash	16.0 %
Calcium	1.7 %
Phosphorus	0.5 %
Magnesium	0.5 %
Sodium	0.3 %
Lysine	1.0 %
Methionine	2.0 %
Cystin	0.2 %

### NUTRITIONAL ADDITIVES per kg

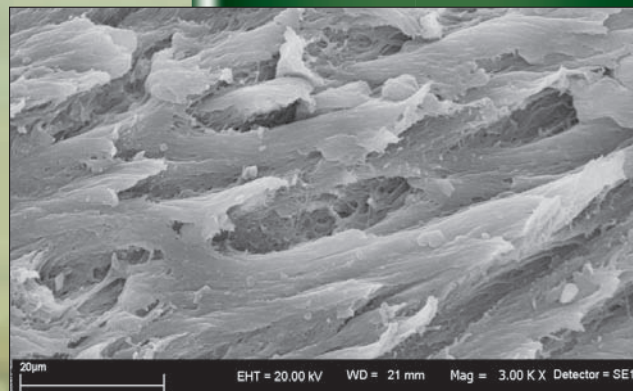
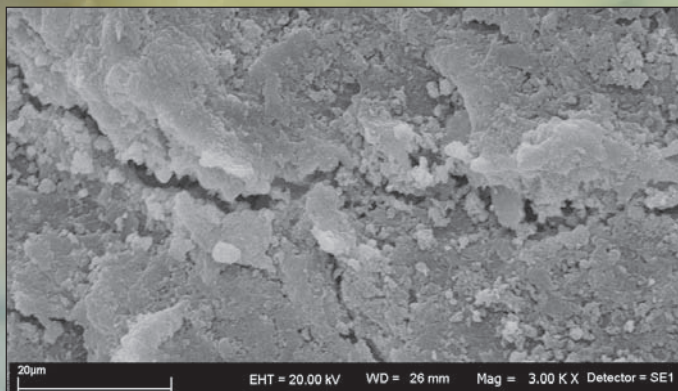
Vitamin A	30,000 IE
Vitamin D3	3,300 IE
Vitamin E	900 mg
Vitamin C	10,000 mg
Vitamin B1	100 mg
Vitamin B2	100 mg
Vitamin B6	70 mg
Vitamin B12	200 mcg
Biotin	80,000 mcg
Nicotinic acid	220 mg
Folic acid	30 mg
Pantothenic acid	112 mg
Choline chloride	1,600 mg

### TRACE ELEMENTS per kg

Iron	750 mg
Zinc	2,500 mg
Manganese	1,100 mg
Copper	540 mg
Iodine	5.5 mg
Cobalt	14 mg
Selenium	2.8 mg

### FEEDING RECOMMENDATION

**Approx. 40 g per 100 kg** body weight and day.  
**Approx. 20 g per 100 kg** body weight are sufficient for prophylactic feeding. ht.



A study in mares with bad hooves showed that the hoof horn considerably improved after having been fed Ungulat Hufkur for six months.



# Vanish the Blemish

If shedding becomes a problem, if the immune status declines, if unexplainable tiredness or poor performances are accompanied with nervousness or a reduced ability to cope with stress, it is highly likely that your horse's feed lacks an adequate dietary supply in trace elements and other vital nutrients. In many cases, simply feeding a conventional mineral supplement may just not be enough. MicroVital has been specifically formulated to fill this gap and has been proven to be very effective very quickly.

# MicroVital

## Biophilic trace elements and valuable vitamins



Bucket 3 kg and 10 kg

**MicroVital has been specifically formulated to quickly and efficiently balance any mineral deficiencies by offering highly bio-available mineral and trace elements.**

- rich in zinc, copper and manganese
- regulatory protein components ensure a fast transport
- reliably balances mineral deficiencies, even when fed in low quantities
- produces fast, visible results

There are many situations that increase the horse's requirement in trace elements. Especially shedding, environment or use-related stress as well as breeding, high performances and age lead to a higher need in trace elements. Especially stressed horses, horses suffering from overacidification or those with a poor immune system, horses suffering from allergies, eczema or metabolic disorders also have a higher requirement in trace elements. A diet high in grains and protein will also increase the horse's need for vital nutrients.

### Lack in basic feeds

Conventional diets consisting of pasture grass, hay or silage frequently do not meet the equine requirements in trace elements, neither when supplemented with grain. Nutrient depleted

soil on the one side – and in this respect the most commonly known lack in selenium – and an overuse on the other side, an unbalanced fertilization of pasture and farmland and a lack in herbs rich in minerals are the reason for the poor quality of conventional basic equine horse feed today.

The following deficiency symptoms are known with horses: coat, skin and hoof problems, mental disorders, immune disorders, digestive problems like flatulence and colic, muscle and performance problems. But also low-weight horses, fertility problems, stunted growth and development disorders and the diet-related sweet itch are possible consequences.

### Highly bio-available minerals – a sure means of efficient supplementation

Organically bound minerals and trace elements can comprise amino acid chelates or sugar compounds and can be found in such substances as yeast or algae. But the body does not absorb all of these different types of organic mineral compounds equally well.

### Natural regulatory protein components

Plant-derived regulatory protein components support the functioning of trace elements and vitamins inside the organism and thus naturally enhance health. This benefits in particular the immune system and the metabolism, it increases the horse's ability to cope with stress and facilitates quick recovery after state of exhaustion.

### Vital health and new energy reserves

MicroVital is a highly efficient mineral supplement for horses that closes an important gap in conventional equine nutrition by providing a balanced combination of biophilic trace elements and regulatory protein components. MicroVital has been formulated specifically to optimally revitalize and improve health. It thus contains a perfectly balanced selection of only the highest-quality vital and natural nutrients.

### COMPOSITION

Carrots, brewer's yeast, oil seed mixture (linseed, sunflower, fennel) 9%, corn germ, algae powder, malt-yeast-flavour, pea protein, oil mixture (linseed-/sunflower-/corn germ oil) cold-pressed 3%, apple syrup, salt, wheat bran, garlic, grape seed extract, coriander, lovage

### INGREDIENTS

Raw protein	18.0 %
Raw fibre	6.0 %
Raw fat	8.0 %
Raw ash	18.0 %
Calcium	1.8 %
Phosphorus	0.5 %
Magnesium	1.0 %
Sodium	1.0 %

### NUTRITIONAL ADDITIVES per kg

Vitamin E	2,000 mg
Vitamin B1	350 mg
Vitamin B2	650 mg
Vitamin B6	350 mg
Vitamin B12	50 mcg
Biotin	5,000 mcg

### TRACE ELEMENTS per kg

Iron	2,500 mg
Zinc	7,500 mg
Manganese	7,000 mg
Copper	1,000 mg
Iodine	2 mg
Cobalt	30 mg
Selenium	9 mg

### FEEDING RECOMMENDATION

**Approx. 10-15 g per 100 kg**  
body weight and day

## Additional Value through Nutritional Value

Malt has been known as an appropriate appetite stimulant for decades, and has long since made a name for itself as a valuable component in horse feeds to improve performances, appetite and a beautiful overall appearance. In combination with high-quality yeast, it also supports the intestinal health.



# EquiMall

Malt-yeast-drink with herbs



Box including liquid dispenser 10 liter

This concentrated, liquid malt and yeast extract contains five different types of malt, a range of special herbs and lysed yeast.

- stimulates appetite and digestion
- great taste and highly nutritious
- supports the energy production in the muscles
- no sugar or carbonic acid added

# EquiMall forte

Malt-yeast-drink with herbs



Bottle 500 ml

The approved malt-yeast-drink, obtained by the removal of water, is a four-fold concentrate. It is available in a 500 ml squeeze bottle. Highly compressed Equimall for even more appetite and vitality.

- for all horses that are stressed, nervous or that work very hard
- for broodmares and weanlings
- for convalescents and older horses

## COMPOSITION

Malt	90%
Brewer's yeast	5%
Herbs	5%
Herbs (sage, coriander, basil, lemon grass, rosemary, fennel seed, peppermint) on brewing waterr	

## INGREDIENTS

	forte	Equimall
Raw protein	1.0	0.1 %
Raw fibre	0.0	0.0 %
Raw fat	0.0	0.0 %
Raw ash	5.0	2.0 %
Overall sugar	78.0	17.0 %

**FEEDING RECOMMENDATION Equimall**  
200 - 500 ml per day

## FEEDING RECOMMENDATION

**Equimall forte:**

**Add approx. 7-20 ml per 100kg** body weight and day to the concentrated feed, soaked hay cobs or IrishMash.

- in case of lack of appetite and changes in diet
- in case of weakened immune system
- in case of digestive disorders
- during shedding

## Malt

After the germ has been removed, the controlled germinated grain is dried with hot air. During this germination process, the grains produce a lot of enzymes that break down protein, starch, cellulose and pentosans. These enzymes then convert the grains' vital nutrients into soluble substances that will help the germ sprout. However, the germination will then be stopped and the derived green malt will be heated in an extensive drying process to maintain its storability, giving the resulting malt the typical toasty aroma.

## Finest malt extracts

EquiMall is made of five different types of malt that are crushed and mashed with water. This slow process at low temperatures causes the

grains' enzymes to release a vast range of essential vital nutrients.

The result are highly nourishing sugar compounds and primary tasting agents, a vast range of volatile organic acids, polyphenols and decomposition products from protein compounds, as well as nucleoside compounds.

## Herbs, enzymes and antioxidants

EquiMall's unique flavour is the result of a range of spices and herbs added to the mix in the process of production. Together with the malt enzymes, this efficiently promotes digestion. EquiMall also contains a range of natural phenol compounds with highly antioxidant properties that contribute to protecting the heart, vessels, muscles, skin and nervous system.

## A pure and natural product

While conventional malt beer usually contains added sugar, caramel colouring and carbonic acid, EquiMall is a pure, natural and totally alcohol-free product. Its dark colour and the sweet flavour are simply the result of its extremely high malt content. After adding the fresh and liquid yeast, EquiMall is gently heated and airtight packed in a special vacuum process. The patented filling technology prevents the product from an early deterioration. Despite no preservatives are added, there will be no loss in quality. The lysed, bioactive fresh yeast is rich in natural B vitamins and is especially suited for intestinal flora related problems and a poor general performance.

# Like Velvet and Silk

When the sun puts a spell on mane and tail and the horse's back reflects the shimmering light, we are delighted about this shiny presentation, about the horse's health and vitality. Yeast and linseed promote the intestinal health and contribute to a dazzling appearance.

# LinuStar Hefekultur

For a silky coat and a well-balanced digestion

Supports microbial digestion



Bucket 3 kg and 10 kg



Tin 1 kg

The golden yellow linseed is gently cracked open in a patented process and has proven to maintain the horse's silky coat as well as to support the proper functioning of the intestinal tract of emaciated horses or horses that tend to colic. LinuStar also serves to protect the gastric mucosa – even with existing gastric ulcers.

- rich in high-quality mucilage
- rich in omega-3 fatty acids
- no cracking or cooking necessary

### Naturally low in hydrocyanic acid

The golden yellow linseed is low in hydrocyanic acid and does not require any heating. This protects all the beneficial ingredients such as omega 3-fatty acids, vitamin E and the valuable mucilage.

### Patented decomposition process

Cracking is a smooth decomposition process causing hairline ruptures to the shell of the seed. It is still protected against oxidation and deterioration. However, if it comes in contact with liquids like water or the digestive secretions, the shell macerates and the mucilage and all other nutrients are available for the organism.

Live yeast cultures, combined with highly bio-available trace elements, provide natural B-vitamins and nutrients that support the large intestine's flora and promote the growth of a healthy intestinal mucosa.

- live yeast cultures
- probiotic
- particularly tasty
- easy to feed as pellets

### The colon is where health begins

High-quality roughage and moderate grain rations promote a balanced intestinal flora. The probiotic live yeast cultures actively work in symbiosis with the intestine's natural flora. Special trace elements support the growth and the quality of the existing intestinal bacteria which helps in suppressing the growth of unwanted microorganisms, improves the digestion of roughage and pasture grass and promotes the absorption of nutrients and active agents into the blood. A healthy digestive tract will enhance dietary efficiency in the long term, the organism's own synthesis of B-vitamins, and thus significantly contribute to the horse's overall health and well-being.

It is particularly recommended to feed live yeast cultures to hard keepers and older horses, during shedding, to promote hoof growth as well as for hard working competition horses, brood mares and foals.

### COMPOSITION HEFEKULTUR

Material additive Yea- Sacc 1026 35%, brewer's yeast 30%, oil seed mixture (linseed, sunflower) 10%, wheat bran, linseed-/sunflower oil cold pressed 8.5%, grape seed extract, barley flakes, wheat germs, malt-yeast-flavour, herbs (ginger, curcuma) 1.2 %, magnesium fumarate, barley germs

### COMPOSITION LINUSTAR golden yellow linseed, cracked

INGREDIENTS	HEFEKULTUR	Linustar
Raw protein	14.0 %	16.0 %
Raw fibre	2.8 %	18.0 %
Raw fat	9.0 %	30.0 %
Raw ash	6.8 %	
Dietary fibre		27.0 %
Calcium	0.2 %	
Phosphorus	0.4 %	
Sodium	0.04 %	

### NUTRITIONAL ADDITIVES per kg HEFEKULTUR

Saccharomyces cerevisiae 1026  
8x10<sup>11</sup> colony-forming units /kg  
equivalent to 8x10<sup>8</sup> colony-forming units per gram

### NUTRITIONAL ADDITIVES per kg LINUSTAR keine

### TRACE ELEMENTS per kg HEFEKULTUR

Iron	400 mg
Zinc	100 mg
Manganese	50 mg
Copper	25 mg
Cobalt	80 mg
Selenium	0.05 mg

### FEEDING RECOMMENDATION HEFEKULTUR

Approx. 5 g per 100 kg body weight and day. If necessary, the double quantity can be temporarily fed.

### FEEDING RECOMMENDATION LINUSTAR

Approx. 10 to 20 g per 100 kg body weight and day to concentrated feed or IrishMash. If necessary, the double quantity can be temporarily fed.

### Application for the stomach:

Soak LinuStar in hot water (approx. 80°C) for approx. 25 min. The formation of mucus becomes immediately apparent. Only feed in combination with concentrated feed or IrishMash. The mucilage forms a protective film to cover the gastric mucosa.

### Application for the colon:

Add dry LinuStar to the concentrated feed. The linseed gradually macerates during digestion and releases the mucilage into the colon.

# Nerve Food

Do you want your horse highly concentrated and listening closely to your every command? Do you want its muscles flexible and the horse relaxed in the middle of large crowds and lots of noise? It may sound like wishful thinking, but proper nutrition can play a crucial role.



# Equalizer

For concentration and composure — no doping



Tin 1 kg

The special composition of herbs containing ginseng, melissa, chamomile, essential fatty and amino acids as well as a high-dose of vitamin B12 will increase the mental capacity of a horse in all stressful situations.

- suitable for sport horses
- to reduce stress during transport or when changing stables
- during rest periods
- pelleted

Horses as flight animals respond very sensitively to environmental stimuli. Some animals are very jumpy, making it difficult to handle in everyday life. For this reason, it can be an adventure to ride them. Such behavioural patterns are reinforced by various stress factors. These include excessive demands in training and competition, lack of exercise, transport, changing stables, irregular feeding times or hierarchical problems while grouped together.

## Stress due to malnutrition?

A diet lacking in variety can be a cause of over-sensitivity. Common feeding mistakes include overfeeding with cereals or diets with a lack of forage herbs and nutrients which may promote jumpiness or stress. Equalizer is a newly developed drug-free "anti-stress food supplement" that fills gaps that have been left in the supply of nutrients to the nervous system. This promotes a stable nerve function. And horses remain relaxed even in stressful situations.

## Food for the nervous system

Through its unique combination of nutrient-rich herbs, including ginseng, Siberian ginseng, chamomile, melissa, propolis and a high magnesium protein complex, Equalizer reduces the excessive release of stress hormones. The added lecithin in conjunction with a variety of B-vitamins creates a more stable transmission of nerve impulses.

## Problems of the nervous system due to free radical substances

Over a long period, stress creates radical and aggressive substances which damage the protective layer of the nerves and can jeopardize a regulated function of the nervous system. Possible effects include erratic behaviour, muscle tension and ataxia. St. Hippolyt's Equalizer contains diverse natural protective substances to neutralize the free radicals. Essential fatty acids derived from plant seeds and natural lecithin contribute to the regeneration of the nerve sheath. Numerous application experiences have confirmed that Equalizer promotes normal behaviour in stress-susceptible horses.

## COMPOSITION:

Cereal germ, brewer's yeast, herbs (ginseng, Siberian ginseng, holy thistle, chamomile, melissa) 18%, lecithine, chlorella-algae, magnesium-protein-complex, oil mixture (linseed-/ sunflower oil), apple syrup, fruit vinegar, algae powder, propolis.

## INGREDIENTS:

Raw protein	15,0 %
Raw fibre	6,0 %
Raw fat	15,0 %
Raw ash	18,0 %
Calcium	2,0 %
Phosphorus	1,0 %
Magnesium	0,6 %
Lysine	0,6 %
Methionine	0,3 %

## NUTRITIONAL ADDITIVES per kg

Vitamin A	26,000 IE
Vitamin D3	2,800 IE
Vitamin E	2,800 mg
Vitamin B1	2,000 mg
Vitamin B2	4,000 mg
Vitamin B6	2,000 mg
Vitamin B12	10,000 mcg
Biotin	600 mcg
Nicotinic acid	150 mg
Folic acid	10 mg
Pantothenic acid	45 mg
Choline chloride	750 mg

## TRACE ELEMENTS per kg

Iron	800 mg
Zinc	100 mg
Manganese	70 mg
Copper	40 mg
Iodine	0.7 mg
Selenium	0.5 mg

## FEEDING RECOMMENDATION:

We recommend to feed **approx.**

**5 g per 100 kg** body weight and day.

If necessary, the double quantity can be temporarily fed.



# Getting the Chemistry Right

When a horse is tired and doesn't perform well, when it shows abnormal loss of body weight despite being fed enough, or when it is struggling with scratches, it might be suffering from liver disease. Besides, oedema or abnormal urination may be hints on additional kidney problems. Some of the most frequent ones are mouldy complete or concentrated feeds, infections, intestinal flora problems, toxic plants, worm infestations or certain medications.

# Equimeb Hepa

Supports proper liver function



Bucket 3 kg

Equimeb Hepa is designed to provide the horse with the necessary liver-supporting nutrients in higher concentration as supplement of the daily concentrated feed ration. This will allow especially easy keepers to support their liver function with the daily feed, independent from the total quantity of concentrated feed or the brand.

- detoxifying combination of nutrients
- easy to feed as pellets
- well-accepted by the horses

## Two for the liver

Meta-Diät and Equimeb Hepa provide exactly those vital nutrients that support the equine liver function. Specific substances derived from milk thistle support the regeneration of liver cells (hepatocytes), and the bitter tasting compounds of the artichoke facilitate the absorption of fat in the liver. The essential amino acids lysine and methionine are the direct nutritional elements needed for the cell regeneration.

## Functional protective nutrients

Meta-Diät includes functional nutrients such as linseed, brewer's yeast, wheat bran and B-vitamins that provide efficient nutritional support for a healthy digestive system and thus contribute to reducing any intestinal toxins that might affect the organism's organs. Natural antioxidants, so-called OPC's derived from grape seed extracts, vitamin E

# Meta-Diät

To support and protect the proper function of liver and kidneys



Paper sack 25 kg

Meta-Diät is a natural and effective alternative to conventional concentrated feed for horses suffering from liver or kidney problems. It contains a range of natural functional nutrients that actively support the development of a healthy intestinal flora, support liver function and protect organ cells.

- contains a well-balanced composition of amino acids
- rich in detoxifying and protective nutrients
- contains specific nutritious herbs

and membrane-stabilizing essential fatty acids such as derived from linseed, play an important part in the protection of the organ cells against radical compounds..

## When to feed Meta-Diät and when Equimeb Hepa?

Meta-Diät is a substitute for concentrated feed and has to be given in larger quantities to ensure that the organism is provided with a sufficient amount of organ-functional nutrients. However, this is difficult to handle in some boarding stables. Besides, the daily ration of concentrated feed has to be reduced with many horses because they are easy keepers or because they do not have to work that hard so that it is impossible to feed enough Meta-Diät. In these cases, Equimeb Hepa is the perfect alternative.

## COMPOSITION Equimeb Hepa

Herbs (fennel, holy thistle, peppermint, artichoke, caraway) 15%, barley flakes, brewer's yeast 10%, malt, corn germ, corn flakes, alfalfa fibre, wheat bran, apple syrup, carrots, sugar beet fibres, linseed ground 2.4%, garlic, grape seed extract 1.5%, linseed-/sunflower oil cold-pressed 1.5%, sugar beet molasses 1.2%, dried apple, algae powder, lactose, pea protein, sea salt, m magnesium fumarate

## COMPOSITION MetaDiät

Corn flakes, barley flakes, corn germ, alfalfa fibre, wheat bran, herbs 5.6% (peppermint, artichoke, holy thistle, caraway, curcuma), carrots, brewer's yeast, sugar beet fibres, wheat germs, apple syrup, oil seed mixture (linseed, sunflower, black cummin, fennel) finely ground 3.9%, malt-yeast-flavour, grape seed extract, dried apple, algae powder, barley germ, whey powder, salt, beta-carotene, garlic, calcium carbonate (maritime and mineral), linseed oil 0.2%

	Equimeb Hepa	Meta-Diät
<b>INGREDIENTS</b>		
Raw protein	14.0 %	10.5 %
Raw fibre	11.0 %	9.5 %
Raw fat	6.0 %	6.5 %
Raw ash	9.0 %	8.0 %
digestible raw protein		78 g/kg
digestible energy		11 MJ/kg
Starch		20 %
Sugar		5.5 %
Calcium	0.8 %	1.0 %
Phosphorus	0.5 %	0.5 %
Magnesium	0.3 %	0.3 %
Sodium	0.2 %	0.4 %
Lysine	0.8 %	
Methionine	0.3 %	
<b>NUTRITIONAL ADDITIVES per kg</b>		
Vitamin A	11,000 IE	16,000 IE
Vitamin D3	1,200 IE	1,800 IE
Vitamin E	3,000 mg	500 mg
Vitamin C	3,500 mg	
Vitamin B1	1,000 mg	13 mg
Vitamin B2	2,000 mg	13 mg
Vitamin B6	1,000 mg	8 mg
Vitamin B12	200 mcg	45 mcg
Biotin	800 mcg	300 mcg
Nicotinic acid	150 mg	50 mg
Folic acid	10 mg	1 mg
Pantothenic acid	45 mg	20 mg
Choline chloride	2,500 mg	500 mg
Beta-Carotin	100 mg	70 mg
<b>TRACE ELEMENTS per kg</b>		
Iron	800 mg	80 mg
Zinc	800 mg	200 mg
Manganese	750 mg	160 mg
Copper	100 mg	20 mg
Iodine		1.5 mg
Cobalt		1.5 mg
Selenium	0.6 mg	0.5 mg

## FEEDING RECOMMENDATION

**Equimeb Hepa**  
Approx. 10-20 g per 100 kg body weight and day. Pure or added to the concentrated feed.

## FEEDING RECOMMENDATION MetaDiät

Approx. 400-500 g per 100 kg body weight and day, to be offered in different portions, together with high-quality hay. With lower dosage or supply shortage, we recommend adding SempertMin or MicroVital. For higher energy requirements, corn flakes or hay cobs can be added.

1 liter = approx. 750 g MetaDiät

Once our horses would travel long distances. They would roam through sandy hills and wander through lush green forests to search for exactly those herbs, buds, leaves, bark, mosses and grasses they would need for optimum health. These horses would be able to perfectly meet their nutritional needs themselves. However, the situation of our horses has changed. We are now not only responsible to ensure their appropriate living, but also to provide them with all important nutrients and vital substances required.



# A Breath of Fresh Air



# Mucolyt

Contains a unique variety of herbs



Bucket 10 kg

# Hippomun

Supports the immune response



Tin 1 kg

**Mucolyt contains a selected range of high-quality herbs, such as peppermint, thyme, chamomile, ribwort, aniseed, fennel, cumin, coltsfoot and many others more to upgrade the daily feed ration.**

- contains a rich variety of herbs
- pelleted and very tasty
- supports the respiratory system
- suitable for continuous use

### A lack of biodiversity

The reduction in the biodiversity of plants found on our pastures today means that horses are no longer able to meet their natural requirements in vital nutrients, such as essential oils and essential trace elements, by eating herbs. The susceptibility for respiratory problems can be a sign of an unbalanced feed ration or a diet deficient in herbs and even increases with many horses during shedding.

### Natural nutrients for respiration

Tea and spice herbs are especially rich in natural essential oils that are extremely important to keeping a horse's respiratory system moist and clean. Some of the rarer trace elements, such as are often contained in certain herbs, also contribute to the detoxification, thus stabilizing the immune system. The selected range of different herbs in Mucolyt upgrades the daily feed ration and supports the natural cleansing of the respiratory tract.

**The effectiveness of the body's immune system depends on its ability to react fast, and on the immune cells' ability to proliferate rapidly. Hippomun provides a range of approved nutritional components such as selected brewer's yeast and grape seed extract.**

- supports the equine immune system during change of stable and shedding
- during periods of recovery
- easy to feed as pellets

### Supporting the body's natural defences

Some horses are even more susceptible to bacteria, viruses, mould or parasites. They have a poor immune system. Vaccinations, stress or periods with increased risks of infection are an additional challenge for the immune system. Typical examples are the weaning of foals, stables with a high fluctuation, the show or breeding season, as well as transports. Selected brewer's yeast extracts as basic nutrients for the scavenger cells play a key role in the equine immune system and prevent unwelcome intruders to invade the immune system.

### Immune-activating composition

High-quality protein derived from oil seeds, algae and brewer's yeast, as well as omega-3 fatty acids from linseed oil and linseed protect the macrophages and the lymphocytes and provide the immune cells with the necessary building blocks.

#### COMPOSITION MUCOLYT:

Herbs (peppermint, thyme, chamomile, buckhorn, fennel, fenugreek, anise, caraway, horse-foot) 50%, alfalfa fibre, malt, oil seed mixture (linseed, sunflower, black cumin seed), wheat bran, corn germ, oat bran, barley flakes, grape seed extract, calcium carbonate (maritime and mineral), sugar beet fibre, oil mixture (linseed, sunflower), salt, algae powder, pea protein, Himalayan salt

#### COMPOSITION HIPPOMUN:

Grape seed extract, brewer's yeast, corn germ, barley flakes, linseed, malt-yeast-flavour, apple syrup, oil mixture (linseed/sunflower oil) cold pressed, algae powder, Himalayan salt, Chlorella-algae

INGREDIENTS:	Mucolyt	Hippomun
Raw protein	12.0 %	15.0 %
Raw fibre	15.0 %	15.0 %
Raw fat	6.0 %	13.0 %
Raw ash	13.0 %	8.5 %
Calcium	1.7 %	1.0 %
Phosphorus	0.5 %	0.5 %
Magnesium	0.4 %	
Sodium	0.6 %	0.1 %

#### NUTRITIONAL ADDITIVES per kg:

Vitamin A	38,000 IE
Vitamin D3	4,000 IE
Vitamin E	600 mg
Vitamin C	1,000 mg
Vitamin B1	30 mg
Vitamin B2	30 mg
Vitamin B6	20 mg
Vitamin B12	100 mcg
Biotin	500 mcg
Nicotinic acid	100 mg
Folic acid	10 mg
Pantothenic acid	40 mg
Choline chloride	1,000 mg

#### TRACE ELEMENTS per kg:

Iron	160 mg
Zinc	500 mg
Manganese	200 mg
Copper	75 mg
Iodine	3.0mg
Cobalt	1.5 mg
Selenium	1.0 mg

#### FEEDING RECOMMENDATION MUCOLYT

**40 g per 100 kg** body weight and day.

**Approx. 20 g per 100 kg** body weight are sufficient as prevention feed supplement.

#### FEEDING RECOMMENDATION HIPPOMUN

**6 g per 100 kg** body weight and day, to be fed for seven days without interruption, then take a break for three weeks. Repeat feeding interval.

A rider wearing a blue helmet and jacket is riding a dark horse. The horse is wearing a blue saddle pad and a blue halter. The background is a blurred green field.

# Relaxed on the Move

Hardly any other nutrient than magnesium has shown to have such influence on the quality of life. However, until this became common knowledge, many riders had to cope with tensed horses during riding that were also susceptible to recurrent colic symptoms. The significance of magnesium and vitamin E for a proper functioning muscle metabolism and the heart was discovered quite early. And the trace element selenium is also known for its muscle-protective properties. It is a fact that horses' life expectancies have greatly increased because of the availability of high-quality supplements - just like for humans.

# Vitamin E

plus Selen

Vital nutrients for perfect cell protection



Tin 1 kg, bucket 2.5 kg

Antioxidants like vitamin E, selenium and Oligomeric Proanthocyanidins (OPC) have the ability to protect the organism's cells from the consequences of increased performances, poor health or stress.

- rich in natural vitamin E
- particularly high total vitamin E content
- contains a great range of other antioxidant nutrients

### Free radicals vs. antioxidants

High performances and stress cause the release of free radicals which are known to destroy cellular walls, to damage the immune system and to promote the development of allergies. Supplementing the daily feed with antioxidants such as vitamin E, C and A, the trace element selenium and Oligomeric Proanthocyanidins (OPC's) derived from grape seed extract serves as additional protection.

### Specific use

The consequences of deficiencies in antioxidants are general weakness, unrideability, muscle problems and susceptibility to infections which can result in chronic diseases. The soil in many regions is considered to be low in selenium so that this trace element frequently lacks in the basic feed. Supplementing the daily diet with selenium is sometimes inevitable. The usage of vitamin E plus selenium is widespread and not only restricted to competition horses.

# Makor

Highly bio-available  
Magnesium, vitamin E and selected herbs



Tin 1 kg, bucket 3 kg

Makor contains a range of different magnesium compounds, high levels of vitamin E and a unique blend of especially selected herbs.

- high content in magnesium and vitamin E
- effective selection of herbs
- highly available nutrients

### Detecting a magnesium deficiency

Horses who are trained hard or who are competing a lot, young horses in training and older horses have an increased requirement for magnesium. The same applies to mares towards the end of gestation. Pregnant mares can suffer from tensions, blockades and muscle spasms or even premature labour. The more subtle signs of magnesium deficiency are anxiety, respiratory distress and, in connection with deficiency-caused cardiovascular problems, swollen legs and associated weather-related colic.

### The solution

Makor will effectively balance these deficiencies within a couple of days, making nervous horses more relaxed, tensed horses will be better to ride and weather-sensitive horses more robust. Makor provides excellent nutritional support for potentially challenging situations such as change of stable or climate, transport, riding, gestation or birth.

### COMPOSITION VITAMIN E + Selenium

Corn germ, carrots, barley flakes, parsley, apple syrup, herbs (hawthorn, coriander), grape seed extract, brewer's yeast, algae powder, oil mixture (linseed, sunflower) 1.6%, barley germ, pea protein, dried apple

### COMPOSITION MAKOR

Herbs (coriander, hawthorn, anise, fennel) 35%, magnesium acetate/-fumarate-mixture 30%, linseed-/sunflower oil cold-pressed 7% brewer's yeast, garlic, grape skin, Himalayan salt, algae powder, corn germ, sugar beet molasses, grape seed extract, curcuma, barley germ, calcium carbonate (maritime and mineral), cinnamon, vinegar, pea protein

INGREDIENTS	VIT. E + S.	MAKOR
Raw protein	12.0 %	6.0 %
Raw fibre	15.0 %	8.0 %
Raw fat	6.0 %	7.5 %
Raw ash	13.0 %	18.0 %
Calcium	1.7 %	0.6 %
Phosphorus	0.5 %	0.2 %
Magnesium	0.4 %	10.0 %
Sodium	0.6 %	0.4 %

### NUTRITIONAL ADDITIVES per kg

Vitamin A	175,000 IE	40,000 IE
Vitamin D3	20,000 IE	4,000 IE
Vitamin E	100,000 mg	40,000 mg
Vitamin C	2,000 mg	10,000 mg
Vitamin B1	800 mg	
Vitamin B2	1,500 mg	
Vitamin B6	800 mg	
Vitamin B12	500 mcg	5,000 mcg
Biotin	30,000 mcg	700 mcg
Nicotinic acid	400 mg	
Folic acid	50 mg	
Pantothenic acid	200 mg	
Choline chloride	500 mg	

### TRACE ELEMENTS per kg:

Iron	500 mg	300 mg
Zinc	1,500 mg	470 mg
Manganese	300 mg	170 mg
Copper	250 mg	50 mg
Iodine	8 mg	3.0 mg
Cobalt	30 mg	8.0 mg
Selenium	10 mg	0.6 mg

### FEEDING RECOMMENDATION

#### VITAMIN E + Selenium

Approx. 5 g per 100 kg body weight and day. If necessary, the double quantity can be temporarily fed.

#### FEEDING RECOMMENDATION MAKOR

Approx. 5 g per 100 kg body weight and day. If necessary, the double quantity can be temporarily fed.

# Oil – The Smarter Way of Feeding

Oats and grass seeds are those components in horse feed that contain unsaturated fatty acids which are beneficial for the blood flow, ensure a shiny coat and a healthy hoof structure. Fatty acids are also part of the cell walls and contribute to the regeneration of nerve and organ cells, providing at the same time a protein- and sugar-free source of energy for horses susceptible to tying-up and those suffering from grain allergies. According to the latest research studies of the Kentucky Equine Research Institute, vegetable oil reduces the glycemic index of a diet rich in grain, giving a lower blood sugar and thus contributing to increased performances.

# HippoLinol

A versatile, cold-pressed blend of oils



Can, 2.5 l

# Leinöl

Pure vegetable oil



Bottle 750 ml, can 2.5 l

# Schwarzkümmelöl

High-quality black cumin oil



Bottle 250 or 750 ml

HippoLinol is a well-balanced blend of linseed, sunflower, corn and wheat germ oil. Native herb oils add the finishing touch to the formula.

- incredibly rich range in fatty acids
- rich in secondary plant substances
- especially rich in clouding agents

#### FEEDING RECOMMENDATION

**Approx. 5 - 50 ml per 100kg** body weight and day together with the conventional daily feed.

Linseed oil has the highest concentration of Omega-3 fatty acids of all known vegetable oils. This makes linseed oil extremely sensitive to heat and difficult to process. The smooth extraction methods used in the production of St. Hippolyt's linseed oil assure that its peroxide value remains low and has few fatty acids to make the product perfect.

- contains 50% Omega-3 fatty acids
- highly nutritious by cold pressing
- natural without filtration

#### FEEDING RECOMMENDATION

**Approx. 5 - 25 ml per 100kg** body weight and day together with the conventional daily feed.

Black cumin has a long history of usage in the Orient as both a spice and medicine that goes back more than 2,000 years. The oil is derived from organically grown black cumin and is full of polyunsaturated fatty acids which are vital for the formation of prostaglandins and the essential oil nigellone.

- rich in gamma-linolenic acid
- rich in rare oil fractions
- contains more than 100 different phytochemicals

#### Health benefits

Prostaglandins are produced by the body and they act very much like hormones. They inhibit infection, act as an aid to blood circulation, balance the immune system and block the action of allergic mediators. The prostaglandin synthesis depends on the presence of adequate quantities of polyunsaturated fatty acids and the trace element zinc, which is why we recommend adding Hesta Mix or Struktur-Energetikum or MicroVital to your horse's basic feed.


#### FEEDING RECOMMENDATION

**Approx. 1.5 - 3 ml per 100 kg** body weight and day together with the conventional daily feed.

#### Carefully produced

St. Hippolyt's vegetable oils are of very high quality. They are cold pressed at temperatures below 40° with moderate pressure only, followed by a smooth sedimentation procedure. This protects the oils' sensitive fatty acids from being destroyed as a result of thermal, chemical or mechanical stress. The raw materials used for the production of these oils are sourced from certified organic and certified pollution free contract farms. The high quality of the raw materials in combination with the gentle process used to produce these oils give them a very special flavour and make them rich in highly nutritious clouding agents and other valuable oil compounds.

# Medical Vital Nutrients

A white horse with a blonde mane is captured in a dynamic running pose, moving from left to right across a sandy, reddish-brown ground. The horse's body is sleek and muscular, with its front legs extended forward and its back legs pushing off. The background is a plain, light-colored wall, possibly part of a stable or arena. The overall scene is bright and clear, emphasizing the horse's movement and form.

The success of a treatment tends to be strongly linked to a patient's diet. This applies both to conventional as well as to alternative medicine. Especially when it comes to alternative therapies, to manual and phytotherapy in particular, the treatment aims at activating the body's self-healing power which urgently requires an adequate diet. Nutritional deficiencies – if not balanced – will delay, if not prevent, any treatment success.

Only available through vets!

# HippoVet

— only available through vets

**High content in highly digestible vital nutrients to efficiently balance any nutrient deficiency.**

A deficiency in one or several nutrients can significantly interfere with treatment success and even lead to additional health issues with the horse. These days, the most frequent diet-related health problems include:

- susceptibility to infection
- susceptibility to eczema and allergies
- wound healing disorder
- fertility disorder
- arthritis and OCD
- hoof-related problems
- muscle diseases
- hyperacidity

## Promoting enzyme activity

Besides structural tasks, minerals and trace elements play a pivotal role for the organism's enzyme system. Any disturbance in enzyme activity can cause metabolic problems that can express themselves in many different forms, depending on the individual organism. Nutritional deficiencies are rarely associated with any obvious signs to start off with, but tend to worsen slowly and gradually, being unrecognized for sometimes long periods of time. Only externally visible symptoms will be recognized by humans. Over time and if left uncorrected, nutritional deficiencies can manifest as serious diseases.

## Identifying nutrient deficiencies

Only blood tests taken by the vet will help to determine nutrient deficiencies. Certain nutrient deficiencies can also be identified by means of hair analyses, and – in some cases – by experts with a trained eye.

**Early signs of nutrient deficiencies tend to be:**

- changes in coat and skin
- changes in hoof structure
- tensed muscles
- losing motivation for exercise

## Hesta Plus product range

### Highly bio-available trace elements

St. Hippolyt's Hesta Plus products distinguish themselves through their highly bio-available compounds. The organically bound nutrients are quickly absorbed by the intestine and passed into the blood stream and organism.

- quick absorption
- reliably balances nutrient deficiencies
- specially formulated supplements

### Only available through vets

The period of time over which Hesta Plus should be administered depends on the respective deficiency and nutrient involved. Zinc deficiencies, for example, need months or sometimes even years to be properly balanced, while selenium deficiencies can be corrected comparatively quickly.

St. Hippolyt's Hesta Plus products are exclusively available through vets.

# Hippovet®

Horses suffering from trace element deficiencies should always be given basic feeds that are particularly rich in these elements, such as Hesta Mix, Struktur-Energetikum or Vitalmüsli „Beste Jahre“. MicroVital as a mineral feed is preferred to conventional products.

### Possible signs of deficiencies:

#### Iron

Anaemia, susceptibility to infections, reduced performances

#### Zinc

Skin, coat, hoof and fertility problems, sweet itch, susceptibility to allergies and infections, lack of appetite, stunted growth and wound healing disorder, lack of insulin, visual disorders

#### Copper

Abnormal bone development and pigmentation disorder, fertility problems, arthritis, osteoporosis, nervousness, susceptibility to allergies

#### Selenium

Abnormal muscle growth, abnormal heart muscle function, alopecia, susceptibility to infections, circulatory disorder, lumbago

#### Manganese

Problems in the bone, cartilage and tendon metabolism, muscle tensions, muscle metabolism problems, tying-up, susceptibility to allergies, general hyperacidity



# St. Hippolyt Wellness Program

St. Hippolyt does not only focus on the power of nature as regards nutrition. The basis of its care products are mostly natural substances that are soft, however very effective.



## Special Care Products for Horse & Equipment

### St. Hippolyt's Fliegenschutz / Fly Protection

Reliable protection against biting and sucking insects!

St. Hippolyt's Fly Protection provides active agents that keep flies, horse flies, ticks and all other insects away from your horse. A selected range of care components protects coat and skin.

### St. Hippolyt Hufbalsam / Hoof balm

Nourishes and protects with natural oils and beeswax!

Rapidly absorbed, moisturises and does not seal the hoof pores. For the daily care of dry and brittle hooves.

### St. Hippolyt Kühlgel / Cooling gel

Enlivens and energises!

A selected range of raw ingredients from human cosmetics cool and relax muscles, tendons and ligaments after physical exercise or competitions. Free from preservatives.

### St. Hippolyt Desinfektion / Disinfection

Reliable protection against bacteria!

St. Hippolyt's Disinfection counteracts the most common types of bacteria and lower fungi, combined with a limited virucidal efficacy. It sustainably counteracts for example Staphylococcus aureus and Escherichia coli.

### St. Hippolyt Shampoo

For an efficient and gentle cleansing!

Specially designed to meet the needs of the sensitive horse skin, will give skin and coat protection from drying out. For a silky, shiny coat and long hair.

### St. Hippolyt Mähnspray / Mane (and Tail) Spray

Adds a silky texture and shine, makes mane and tail easier to comb!

The hair-cosmetic composition „Provitamin-D-Panthenol“ gives coat and long hair protection from drying out, reduces the risk of split hair, soothes itching and makes mane and tail shine.

### St. Hippolyt Lederreiniger / Leather cleaner

To effectively clean, refresh and disinfect leather!

A ready-to-use solution for all kinds of smooth leather. Removes even stubborn grime.

### St. Hippolyt Lederconditioner / Leather conditioner

Treats and protects leather with real beeswax!

Adds a brilliant shine, anti-static and dust-repellent. Allows the leather to breathe despite its water-repellent properties. Designed to protect leather material from cracking and drying out

Systematic external treatments or applications are often an effective complement to the nutrient supply derived from the daily feed.

### MoviDerm

For swollen, irritated and strained joints, ligaments and muscles.

MoviDerm contains a sea-fruit concentrate that is of equal quality to that used in MoviCur. However, MoviDerm also contains a range of herbs that support tissue health, grape seed concentrate, oil-derived natural vitamin E and native brewer's yeast that support tissue regeneration. Its beneficiary effect is furthermore amplified when the skin is gently heated. Free from camphor.

### SpumaCoron

A balanced supplement for hoof growth

SpumaCoron contains high-quality bay leaf oil, herbs that actively enhance blood circulation, essential fatty acids, organosulfur, organically bound zinc, cell-protective grape seed extract and highly nutritious brewer's yeast. For daily massage into the coronary band.

### DermiLac Prozem

A care product for irritated and sore skin

DermiLac Prozem is a specially derived birch extract that was developed and enhanced over a number of years. It reduces not only itching faster and more significantly, but also effectively supports skin regeneration. Thanks to its special fine and stiff foam, DermiLac Prozem efficiently promotes skin regeneration in wounds, bruises and chafing, mite infestation and cracked heels.



# Loyal Companions



Dogs have been mankind's loyal companion for thousands of years, and their health and well-being deeply matters to us. St. Hippolyt's range of quality dog food comprises a small, but exclusive range of products for dogs.

# Movilan Dog St. Hippolyt Dog

To avoid diet-related deficiencies in the structure of connective tissue



Tin 1 kg

**Intelligent nutrient combinations with New Zealand Green Lipped Mussel extract, chlorella algae, sprouted wheat and many other components that are naturally rich in vital nutrients**

- quality-certified New Zealand Green Lipped Mussel extract
- natural nutrient-rich ingredients
- reliable source of trace elements

Deficiencies in the supply of the connective tissue can result in mobility problems, such as stiffness or disturbed rhythm, lack of motivation to exercise, problems when getting up or after longer walks. Inappropriate biomechanical stress in conjunction with dietary deficiencies may lead to arthritis. Large dogs in particular are known to frequently suffer from serious mobility problems in later life if fed inadequate diets while growing up.

Movilan Dog is full of high-quality nutrients that are vital for the development of healthy and strong connective tissue, as well as for the stability and proper functioning of tendons, ligaments, joint capsule and cartilage.

Vegetarian dog food



Paper sack 15 kg

**Biologically appropriate, vegetarian dog food, totally free from attractants, artificial colours and preservatives.**

- contains highly digestible carbohydrates
- contains vegetables, brewer's yeast and algae
- contains essential amino acids

St. Hippolyt's Dog Vegetarian is a wholesome and high-nutrient dog food that can be fed together with an additional meat-based feed such as DogFleisch.

### High nutrient ingredients

Different types of cracked grain supply a lot of easily digestible energy. Wheat germ and linseed contain high-quality fatty acids, lecithin and natural vitamin E. Vegetables and bran provide valuable fibres, enriched with essential amino acids and natural vitamin B derived from brewer's yeast. The naturally high selenium and zinc content of the yeast guarantees a beautiful coat and supports a strong immune system.

### Highly bio-available minerals

Millet, algae powder and algal limestone supply a range of nutrients that are vital for the development of a healthy skeleton and strong connective tissue. With its balanced supply in trace elements that is vital for a healthy metabolism and a strong immune system, and the careful processing of the sensitive ingredients, St. Hippolyt Dog is a dog feed of extraordinary quality.

### COMPOSITION MOVILAN DOG

Carrots, Barley flakes, brewer's yeast, corn germ, oat flakes 10%, malt, parsley, calcium carbonate (maritime and mineral), dried apple, green-lipped mussel extract 2%, linseed-/sunflower oil cold-pressed 2%, dicalcium phosphate, magnesium fumarate, coriander, smallage, Himalayan salt, chlorella algae, linseed, apple syrup, garlic, grape seed extract

### COMPOSITION DOG

Corn flakes, barley flakes, oat flakes, popped barley, wheat bran, corn germ 6%, popped, linseed-/sunflower oil cold-pressed, popped rice, popped wheat, calcium carbonate (maritime and mineral), brewer's yeast, popped millet, corn croquettes, algae powder, carrots, beetroot, smallage, salt, parsley, magnesium fumarate

INGREDIENTS	MOVILAN	DOG
Raw protein	15.4	10.0 %
Raw fibre	6.0	5.0 %
Raw fat	6.2	3.0 %
Raw ash	16.4	8.3 %

Calcium	2.0	1.6 %
Phosphorus	0.8	1.0 %
Magnesium	1.0	0.3 %
Sodium	0.4	0.3 %
Lysine	0.9	0.8 %
Methionine	1.1	0.4 %
Cystin	0.2	%

### NUTRITIONAL ADDITIVES per kg

Vitamin A		17,000 IE
Vitamin D3		2,000 IE
Vitamin E	1,000	130 mg
Vitamin C	1,000	mg
Vitamin B1	40	27 mg
Vitamin B2	35	45 mg
Vitamin B6	20	22 mg
Vitamin B12	70	50 mcg
Biotin	1,000	400 mcg
Nicotinic acid	100	45 mg
Folic acid	10	5 mg
Pantothenic acid	35	25 mg
Choline chloride	600	200 mg

### TRACE ELEMENTS per kg

Iron	300	200 mg
Zinc	1,300	150 mg
Manganese	280	80 mg
Copper	70	25 mg
Iodine		1.2 mg
Cobalt		2.0 mg
Selenium	0.9	0.3 mg

### FEEDING RECOMMENDATION

#### MOVILAN DOG

Approx. 1-2 g per 1 kg body weight and day. This concentrated feed should be mixed with the daily usual feed.

#### FEEDING RECOMMENDATION DOG

We recommend approx. 40 - 80 g per 10 kg body weight and day to supplement the meat-based diet. Add about the same quantity of meat, depending on breed, age and performance requirements.

# For Loyal Services

Whether performance dog or faithful companion – doesn't your dog deserve a drink preserving fitness and cheerfulness up until old age? This is possible with a revolutionary, but nonetheless natural nutrient technique.

# Canigard®

Bio Intelligent Nutrition  
Anti-aging with  
nutrient micelles



Bottle 600 g

St. Hippolyt's Canigard – the new, intelligent alternative for healthy joints, increased performances and easier regeneration, upgrades your dog's usual daily diet.

- developing performance potential through mitochondrial pathways
- anti-aging effect
- strong and properly working joints

### Protection of energy suppliers

The millions of mitochondria, the organism's cellular power plants, are responsible for the production of highly bio-available energy potential. Canigard sustainably supports this energy production and the viability of the mitochondria with key nutrients such as L-carnitine and Q10.

### Anti-aging effect

Antioxidant vital nutrients such as herbal vitamin E, selenium yeast and trace elements naturally counteract the consequences of tissue degeneration. Canigard also contains valuable salmon oil including omega-3 fatty acids for a shiny coat and healthy skin.

### Strong joints – joy of movement

Canigard contains special joint nutrients such as extracts of the Green Lipped Mussel with its natural components chondroitin and glucosamine. The supplemented trace elements zinc, manganese and copper in combination with vitamin C are also necessary for the regeneration process of the collagen structure.

# MicroVital DOG

Biophile trace elements  
and valuable vitamins



Tin 500 g

This feed supplement for dogs closes an important gap in the nutrient supply. MicroVital DOG is recommended to be fed to dogs with health or general disorders or for dogs with reduced performances.

- regulatory protein building blocks
- high content in zinc, copper and manganese
- contains algae, brewer's yeast and oil seeds

### Supports the metabolism

Supports the metabolism. Plant-derived regulatory protein building blocks are an important discovery in latest nutritional research. They support the work of the trace elements and vitamins within the organism's metabolic process.

To optimize the beneficiary effects in regard to the dog's vitalization, health stabilization and performance support, only the highest-quality natural nutrient components have been added. Especially the immune system, coat and skin will benefit from the supplementation with Micro Vital DOG.

### COMPOSITION Canigard

Malt-yeast-flavour, fructose syrup, linseed oil, lecithin, mussel extract, carnitine, salmon oil, Q10, curcuma

### COMPOSITION Microvital DOG

Carrots, brewer's yeast, oil seed mixture (linseed, sunflower, fennel seed) 9%, corn germ, algae powder, malt-yeast-flavour, pea protein, oil mixture (linseed-/sunflower-/corn corm oil) cold-pressed 3%, apple syrup, salt, wheat bran, garlic, grape seed extract, coriander, lovage

INGREDIENTS	Canigard	Microvital DOG
Raw protein	1.0 %	18.0 %
Raw fibre		6.0 %
Raw fat	5.5 %	8.0 %
Raw ash	0.5 %	18.0 %
Lysine	0.5 %	
Calcium	0.3 %	1.8 %
Phosphorus	0.4 %	0.5 %
Magnesium	0.2 %	1.0 %
Sodium	0.5 %	1.0 %
Sugar	62.0 %	

### NUTRITIONAL ADDITIVES per kg

Vitamin C	1,000 mg	
Vitamin E	500 mg	2,000 mg
Vitamin B1	10 mg	350 mg
Vitamin B2	18 mg	650 mg
Vitamin B6	5 mg	350 mg
Vitamin B12	2,5 mcg	50 mcg
Nicotinic acid	150 mg	
Pantothenic acid	25 mg	
Folic acid	1 mg	
Biotin	500 mcg	5,000 mcg

### TRACE ELEMENTS per kg

Iron		2,500 mg
Zinc	350 mg	7,500 mg
Manganese	130 mg	7,000 mg
Copper	40 mg	1,000 mg
Iodine		2 mg
Cobalt		30 mg
Selenium	0.5 mg	9 mg

### FEEDING RECOMMENDATION Canigard

per kg body weight

1 - 10 kg:	10 g
1 - 20 kg:	15 g
21 - 30 kg:	20 g
more than 30 kg:	25 g

2 to 3 times per week with the regular food

### FEEDING RECOMMENDATION

#### MicroVital Dog

0.5 g per kg body weight and day together with meat or wet food

# We've Got Even More



## LOBS

Lobs horse treats are a healthy alternative to conventional cakes and treats.

- valuable ingredients
- low in grain
- free from non-nutritive bulking agents

This healthy treat contains a fine, well-balanced and effective composition of valuable ingredients. It furthermore derives its outstanding taste from a range of extremely tasty spice herbs, vegetables, fruit and sprouted grains. A range of vitamins and minerals round off the formula to provide additional nutritional support. St. Hippolyt's Lob treats are not only extremely tasty, but also a particularly healthy treat.

## SPORTS MÜSLI

Grain mix without oats for high performances

A wholegrain and highly nutritious component feed, produced from a range of different types of hydrothermally processed and fermented grains. The extremely well-balanced protein-energy-nutrient content makes SportsMüslI an ideal feed for hard working horses to which it can also be fed in large quantities.

- free from oats and herbs
- rich in oil and carbohydrates

Cold-press linseed oil is an efficient source of energy and of valuable Omega-3 fatty acids and natural vitamin E. Sprouted grains provide an extremely high-quality and diverse range of amino acids. The muesli has also been fortified with a balanced range of minerals and organically bound trace elements for high-performance horses.

## C'REAL

Highly digestible barley, corn and black oat flakes.

St. Hippolyt's C'Real Basics feeds contain purely natural grains which have been washed, soaked and then hydrothermally treated to enhance the carbohydrate digestion.

## C'REAL BASICS BALANCE

60% barley, 30% corn, 10% black oat flakes. Low-oat grain mix for more nervous horses.

## C'REAL BASICS DYNAMIC

60% black oat, 30% barley and 10% corn flakes. St. Hippolyt's Basics Dynamic contains the very special French black oat. It has proven itself extremely successful in feeding competition and breeding horses for many years.

## C'REAL BASICS MAISFLOCKEN

100% corn flakes which distinguish themselves through their low-protein content and their high energy density. The horse will completely benefit from these advantages if the grains have been sufficiently cracked.

## BIOTIN

An effective and successful combination of biotin, highly nutritious wheat germ, herbs and a carefully selected range of vitamins and trace elements, brewer's yeast, sulphur containing amino acids, all of which facilitate and improve hoof growth and structure. In persistent cases, we recommend Ungulat, the wholesome hoof cure with all nutritional components required for healthy hooves.

## B-CAROTIN PLUS KNOBLAUCH

β-carotene deficiencies most frequently occur during the winter months and can cause fertility problems in both, broodmares and stallions. Foetal development also causes β-carotene requirements to increase. St. Hippolyt's β-carotene plus garlic has proven itself particularly effective when fed during the winter months.

## KNOBLIZEM

An effective combination of high-quality garlic, herbs such as rosemary, peppermint and coriander, supplemented with a vast range of B-vitamins, providing relief for horses suffering from insect attacks.

## SORBINIUM CALCIUM

The coral limestone from Brittany contained in this supplement not only provides a natural source of calcium, but its natural origins also mean that it contains a great range of other valuable minerals and trace elements.

## SORBINIUM MINERAL

The cost-effective mineral supplement for larger herds of horses.

## ELEKTROLYTE, water-soluble

Water-soluble electrolytes compensate for minerals lost through heavy sweating, e. g. during transport or high performances.

## HIMALAYAN SALT BLOCK

Himalayan salt is the crown of all salts with gourmets. Thanks to going unprocessed and thus retaining its wealth of different minerals, it really does have an exquisite taste that makes it just as irresistible to horses as to humans.

## KAROTTIS

Karottis contain a blend of carrots and wheat germ, which makes them an ideal source of natural vitamin E and β-carotene.

## KIESELGUR (DIATOMACEOUS EARTH)

Kieselgur contains a combination of diatomite and valuable plant oils and is an ideal source of natural silicon.

## DOG FLEISCH

St. Hippolyt's Dog Fleisch is a juicy meat feed which, when combined with St. Hippolyt's Dog Vegetarian, makes a great tasting meal.



# The Joy of Life

Exercise and a well-balanced, appropriate diet are the most efficient ways of achieving vitality, happiness and inner peace. Unfortunately, however, many factors contribute to a drain on our everyday energy. A regular intake of wholesome nutrients derived from natural products can be a big step towards renewing our depleted energy and reviving our joy of life.

There is constant talk about „miracles of nature“ and „gifts of nature“ and the value they bring to our bodies, but it is clear that many valuable nutrients are often in short supply in our modern diet. The New Zealand Green Lipped Mussel, for instance, provides important nutrients for our joints and spine.

Dietary supplements from the Ebert Mill combine all these natural, highly biologically valuable nutrients and promote a harmonious balance of nutrients and a healthy body. „Food is meant to provide the basis of health“ (Hippocrates): That’s why we support a healthy, balanced diet with our nutritional supplements.

Exercise, vitality, power and a zest for life with the power of nature.



## BiConcal



BiConcal is a further development of Concal that has proven to be especially helpful during lengthy periods of restricted movement. The dual nutrient principle allows a particularly good implementation of nutrients in digestion and metabolism. The breakfast component is a combination of wheat grass and malt sprouts, containing a specific range of digestive and metabolic enhancing food herbs.

The evening component corresponds to proven Concal .

We recommend BiConcal and Concal for physically active people and for those who want to maintain movement and strength, even in advanced years.

## Concal



Concal provides humans with a rich dietary supplement and compensates for elements lacking in our modern diets and daily life. Our proven recipe contains, among other things, a high seafood content, sea algae, round black cumin seed, and vitamin E.

## FlavoCell



An antioxidant cocktail at its finest. Here, the most important radical scavengers are combined in one product. Specific trace elements are combined to ensure a regulated energy metabolism. For more power, motivation and zest for life.

## MicroVital human



Fast food, diets and stress drain our nutrient reserves. MicroVital human compensates for these deficiencies. Vitamins, minerals and trace elements are present in organic form, accompanied by carriers of secondary plant substances.

# Proof of Success

Nowadays, an appropriate and well-balanced diet for competition horses is the key to honest success. Equestrian sports thrives on a good reputation and naturally requires that the horses participating are willingly performing and that they are healthy.





**Michael Freund**, the four-times World Champion is one of St. Hippolyt horse feeds' most dedicated fan for almost 20 years. Although young in years, his son Marco already won the 2012 German Carriage Driving Championships.



**Jessica Kürten** is one of the ten best show jumping riders worldwide. She places great emphasis on an appropriate diet to keep her high performance horses fit. And the results prove her right.



**Lars Nieberg**, the friendly gold medalist, is today running the Gestüt Berl in Sendenhorst near Münster. He was one of the first athletes to achieve top results worldwide with St. Hippolyt products.



**Emma Hindle** is one of the most successful dressage riders. The Brit is living in Erbach/Forest of Odes, and as she knows about her responsibility for her four-legged partners, she decided to feed St. Hippolyt-products - and top results confirm her decision.



**Oliver Luze** believes that if you want to have a champion, you have to treat your horse like a champion. Appropriate feeding is an important key to achieve this goal. Oliver and Katrin Luze have been living and training horses at the Gestüt Fohlenhof in Hassloch/Palatinate since 2011.



**Dorothee Schneider**: „St. Hippolyt provides a wide range of high-quality products to support the well-being and positive work ethic of our beloved four-legged companions and completely match their individual nutritional requirements. The faces of our horses always reflect their joy when they are looking forward with anticipation to the daily feeding.“



**Heinz Stöckle** of the thoroughbred stud Osterhof in Bavaria (Oberallgäu) says: „The brand St. Hippolyt is the epitome of highest requirements when it comes to horse feeds. The wide range of products leaves no desires open for our stud. The brand is on an equal footing with the most noble horses of the world, the pure Arabians“.



**Reinhold Moritz**, Master of Equine Management and stud manager at Kauber Platte: „We place highest demands on the feeding of our breeding and competition horses. St. Hippolyt matches all these requirements to our entire satisfaction“.



**Morey Fisk**: I am very happy that I started to feed my horses with St. Hippolyt feed and supplements. I noticed the difference very soon in how my horses look and perform. I also appreciate the professional service that we all here received from the St. Hippolyt team. What I really like about this company is, that they put a lot of time into the research, all products are of an excellent quality.



**Lars Wagner** had been member of the German B-eventing team with his stallion Makjet since July 2010. Unfortunately, the polite detective is no member of the team any more due to an increased professional commitment. His successes reflect the high nutritional quality of his breeding and competition horses' diet.



**Horst Müller** is one of the most successful breeders of quarter horses in Germany and one of the eldest customers of St. Hippolyt. He has been feeding the horses at his stud „Drei Linden Hof“ in the Rhoen Mountains near Fulda with St. Hippolyt-products for almost 30 years.



**Beate Huke**, is aqua therapist at the Therapiezentrum Eichenhof Huke, Aqua Training, Wellness and Rehabilitation for horses, in Wedemark/Lower Saxony. „A high-quality nutrition is important for recovery purposes and rehabilitation training of our customers' horses. This is the reason why we have been feeding exclusively St. Hippolyt-products for many years!“



**Markus Münch** celebrated successes on all important German race tracks. Since 2012, he has been running his racing stable „mm racing“ in Frankfurt/Main. The former professional football player (Bayern München and Gladbach) knows about the value of a healthy diet and feeds his horses St. Hippolyt-products throughout the year.



# Your Feeding Experts

It has been our main goal to guarantee the well-being of the horse the most effective way with high-quality, natural horse feeds. Therefore, customer service is that important to us when it comes to diet-related questions for your horse.

### Customer intimacy is our goal

St. Hippolyt Marketing and Vertriebs-GmbH distributes premium grade horse feed across all of Europe.

- outstanding quality of products
- reliable distribution network
- competent advice

These features turn St. Hippolyt into an exceptional partner for all horse owners and raisers. The competent St. Hippolyt staff provides sound and reliable advice to develop the perfect and adequate ration for your horse - by telephone, mail or even on site.

In addition, our contact numbers, product range and additional information and knowledge on the principles of healthy equine nutrition are also available online. Our website and our Facebook presentation regularly provide news from science and research related to the subject equine nutrition.

### St. Hippolyt - close to customers

St. Hippolyt always participates at the major and most important trade shows in Germany and abroad. Our customers are welcome to have a look at our different types of feed, to ask for samples and expert advice. Perhaps you just want to meet „the face behind the voice“? We will appreciate to welcome you at our booth!

Our feed concepts are designed to provide horse raisers with concrete instructions and suggestions on how to combine St. Hippolyt-feeds to a maximum effect and with respect to a range of specific diet-related issues. They are available free of charge with us or with your local feed distributor.

### Site Notice

Concept & Layout:  
Karl Möller (moeller.de)

Texte:  
Dr. Eberhard Moll, Anna Reinmuth,  
Sara Fauerbach, Christine Bauer

Photos:  
Guido Recki, Christiane Slawik,  
Bernd Eylers, Karlheinz Frierer,  
Frank Sorge, John Brasseaux,  
Arnd Bronkhorst, Julia Rau,  
Sonja Kapp, Anna Auerbach,  
Verena Koslowski, Sonja Voss,  
Martin Kubat, Gregor Aymar,  
Christian Wheatley

Paintings:  
Karl Möller

Printing:  
Druckkollektiv Gießen 

St. Hippolyt Nutrition Concepts  
Marketing- und Vertriebs-GmbH  
Im Grund 52  
D-36110 Schlitz



Partner of the German Horse Industry



# Together we are strong

Germany's leading companies in the international horse business





Bernd Hermann



Danielle Bohny



Dennis Hiller



Anja Bernhard



Holger Voss



Sarai Fauerbach



Rolf Jung



Elke Horlacher



Florencia Arrambide

# We're Here For You

Feel free to contact us for comprehensive advice for your horse, if you would like to order with our online shop or for sales requests: We will answer any question you might have. In addition to the extensive information on our website, in our catalogue and as offered in our feed concepts, we will be happy to provide additional assistance on the phone or – upon prior arrangement – also on-site.

We will do our best to answer all your questions with the necessary competence and expert knowledge. We look forward to hearing from you and appreciate to receive your comments and suggestions.





Anna Reinmuth



Axel Fromm



Karlheinz Hiller



Bernhard Wipfler



Cordula Becker



Christine Bauer



Bernd Ebert

## Production, Logistics & Quality Control

**Bernd Ebert**

Head of Production and Managing Director  
Mühle Ebert Diehl GmbH  
bernd.ebert@muehle-ebert.de  
0049-6222-990 0

**Anna Reinmuth**

Communication Management Assistant  
anna.reinmuth@muehle-ebert.de  
0049-6222-99-20

**Cordula Becker**

Business Management MED,  
Quality Control  
cordula.becker@muehle-ebert.de  
0049-6222-990 21

**Karlheinz Hiller**

Scheduling, Accounting  
karlheinz.hiller@muehle-ebert.de  
0049-6222-990 23

**Bernhard Wipfler**

Scheduling  
bernhard.wipfler@muehle-ebert.de  
0049-6222-990 11

## Research & Development

In collaboration with

**Dr. Krzysztof Marycz**

Environmental and Life Science  
University Breslau  
Research and Development,  
Scientific Advice

**Dr. cand.agro Christine Brökner**

Research and Development,  
Scientific Advice

**Dr. med. vet. Claudia Kleiber**

Research and Development,  
Scientific Advice

## Marketing, Sales & Dispatch

**Bernd Hermann**

Head of Sales and  
Managing Director St. Hippolyt  
bernd.hermann@st-hippolyt.de  
0049-6642-9606 15

**Florencia Arrambide**

International Sales & Marketing Director  
florencia@st-hippolyt.de  
0044-7584 123 032

**Danielle Bohny**

Internal Office Management  
Account and Trade Fairs  
danielle.bohny@st-hippolyt.de  
0049-6642-9606 21

**Dennis Hiller**

Internal Office Management  
e-commerce  
dennis.hiller@st-hippolyt.de  
0049-6642-9606 11

**Anja Bernhard**

Order Processing  
anja.bernhard@st-hippolyt.de  
0049-6642-9606 13

## Product & Application Advice

**Christine Bauer**

Advice  
christine.bauer@muehle-ebert.de  
0049-6222-990 22

## On-Site Customer & Retailer Advice

**Elke Horlacher**

Distribution Management South Germany,  
Austria, Switzerland  
elke.horlacher@st-hippolyt.de  
0049-151-11713345

**Sarai Fauerbach**

Distribution Management North Germany  
Advice & Clinics  
International Sales & Marketing Advisor  
sarai.fauerbach@st-hippolyt.de  
0049-175-4342648

**Axel Fromm**

Distribution Management West Germany  
& Benelux  
axel.fromm@st-hippolyt.de  
0049-172-2000710

**Rolf Jung**

Distribution Management Central Germany  
rolf.jung@st-hippolyt.de  
0049-172-6712919

**Holger Voss**

Distribution Management North Germany  
holger.voss@st-hippolyt.de  
0049-172-8908841

Email: [info@st-hippolyt.de](mailto:info@st-hippolyt.de)

Internet: [www.st-hippolyt.de](http://www.st-hippolyt.de)

Order telephone: 0049-6642-96060

Order fax: 0049-6642-960666



[www.st-hippolyt.de](http://www.st-hippolyt.de)



**St Hippolyt®**  
NUTRITION CONCEPTS

St. Hippolyt Nutrition Concepts  
Marketing- und Vertriebs-GmbH

Im Grund 52  
D-36110 Schlitz  
Tel.: 0049 - 6642 - 96 06-0  
Fax: 0049 - 6642 - 96 06-66  
E-Mail: [info@st-hippolyt.de](mailto:info@st-hippolyt.de)

Development - Production - Scientific Research  
Mühle Ebert Dielheim  
Talstrasse 27 D-69234 Dielheim  
Tel.: 0049 - 6222 - 99 00 Fax: 0049 - 6222 - 7 51 11

Dealer:

